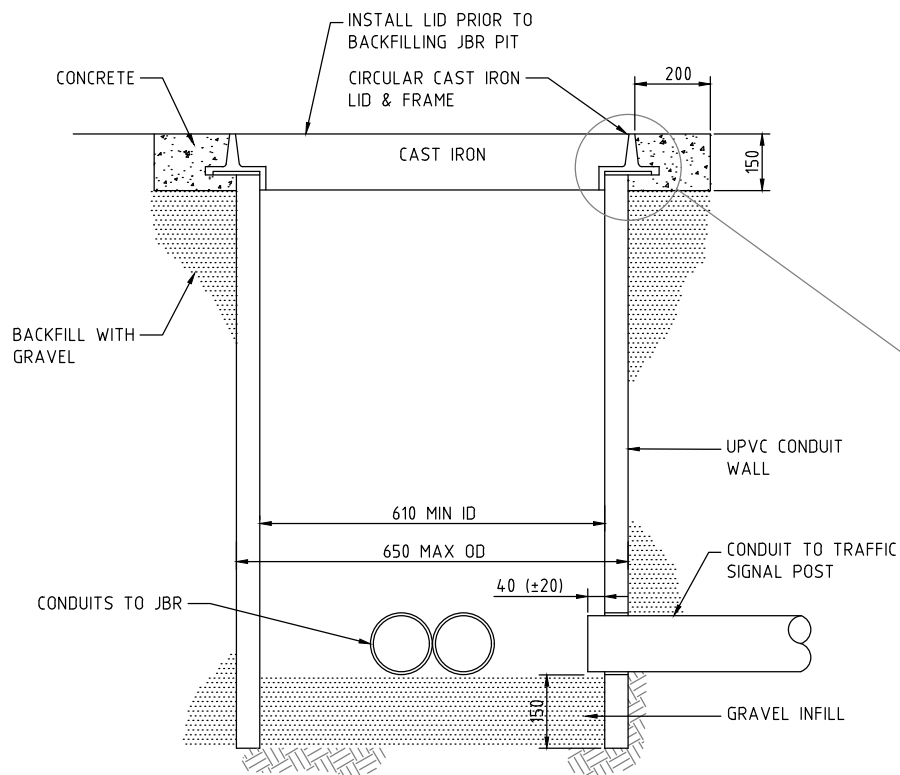
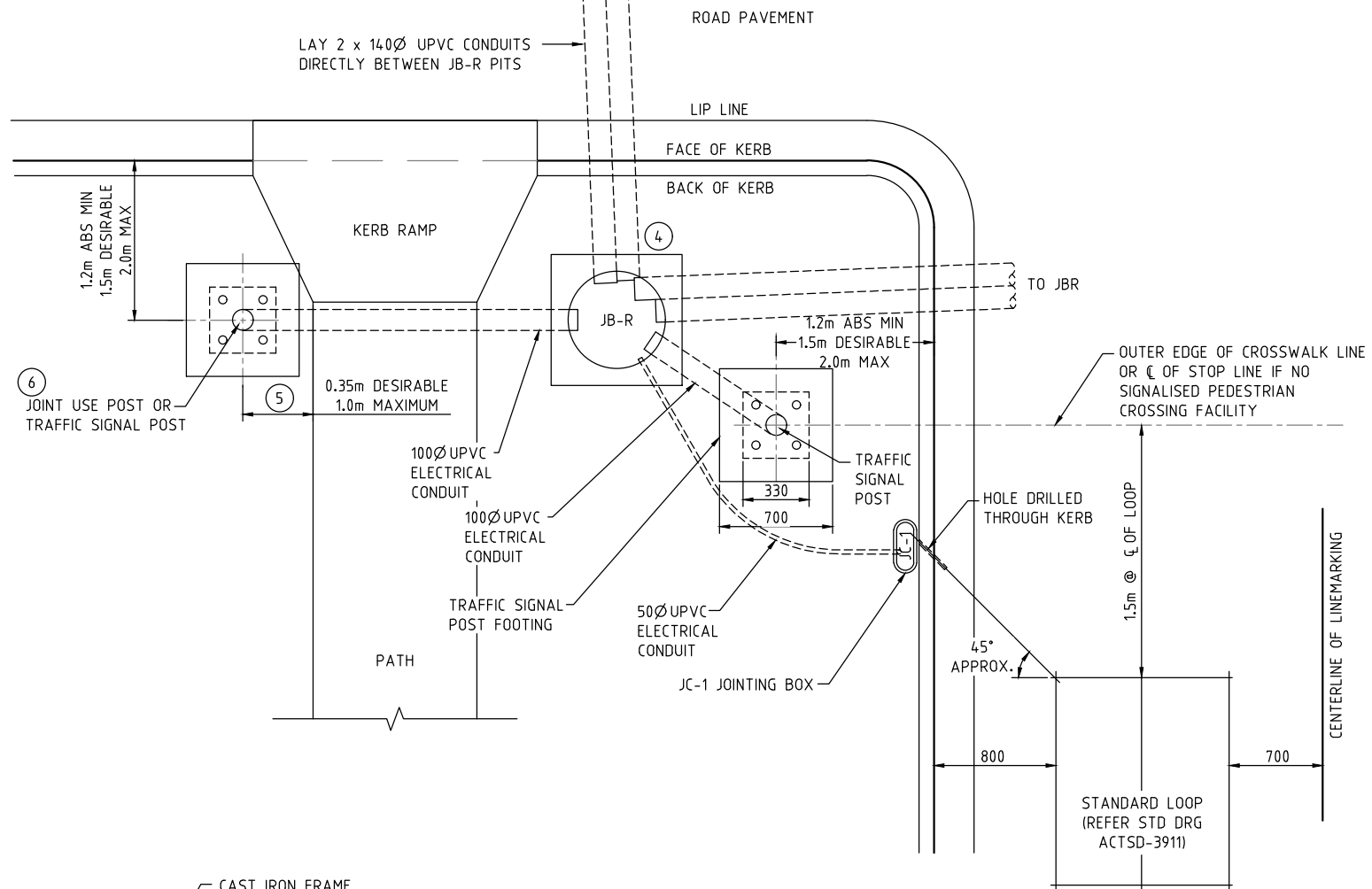
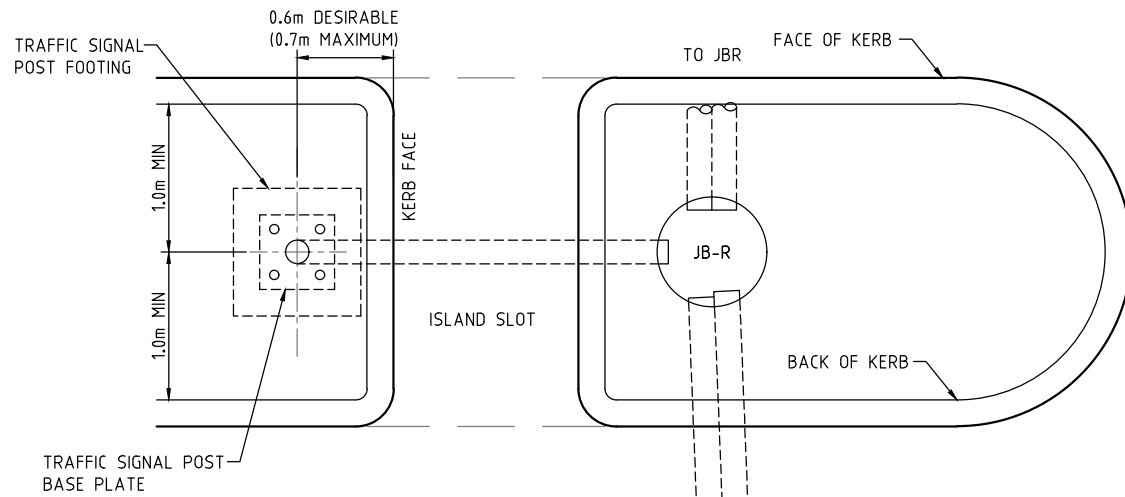


PLAN

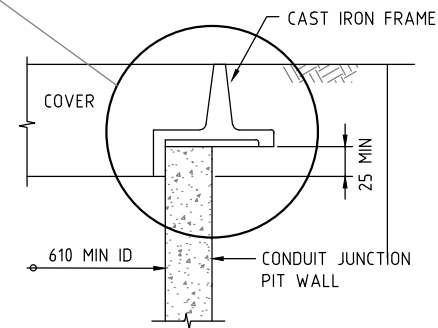


SECTION A-A

CABLE JOINTING PIT (JB-R)



TYPICAL SIGNAL POST, JOINTING PIT AND CONDUIT LAYOUT



FRAME DETAILS

NOTES

- 1 THE NUMBER AND SIZE OF CONDUITS INSTALLED INTO THE JOINTING BOX SHALL VARY TO SUIT INDIVIDUAL SITES.
- 2 INSIDE OF ALL PITS TO HAVE A SMOOTH FINISH.
- 3 ALL DIMENSION ARE SHOWN IN mm UNLESS SHOWN OTHERWISE.
- 4 WHERE PRACTICABLE JB-R PIT LIDS SHOULD BE LOCATED 1.2m MIN CLEAR OF KERB FACE.
- 5 THE PEDESTRIAN BUSH BUTTON SHALL BE LOCATED SO THAT IT IS ON THE UPPER LANDING AT THE REAR OF THE KERB RAMP.
- 6 JOINT USE STREETLIGHT AND SIGNAL POWER SUPPLY FROM TRAFFIC SIGNALS CONTROLLER. REFER MITS13 FOR REQUIREMENTS
- 7 A CONCRETE APRON SHALL BE PROVIDED IN ALL AREAS (INCLUDING LANDSCAPED AREAS).



STANDARD DRAWING

TRAFFIC SIGNALS
JUNCTION BOX
ARRANGEMENT

Authorised: *[Signature]*

Latest Revision Details

1 NOTES AMENDED 19-12-18
0 BASED ON ACTPW DRG S/803/4 05-04-17

Rev	Amendment	Date

Drawing No.	Revision
ACTSD-3914	1