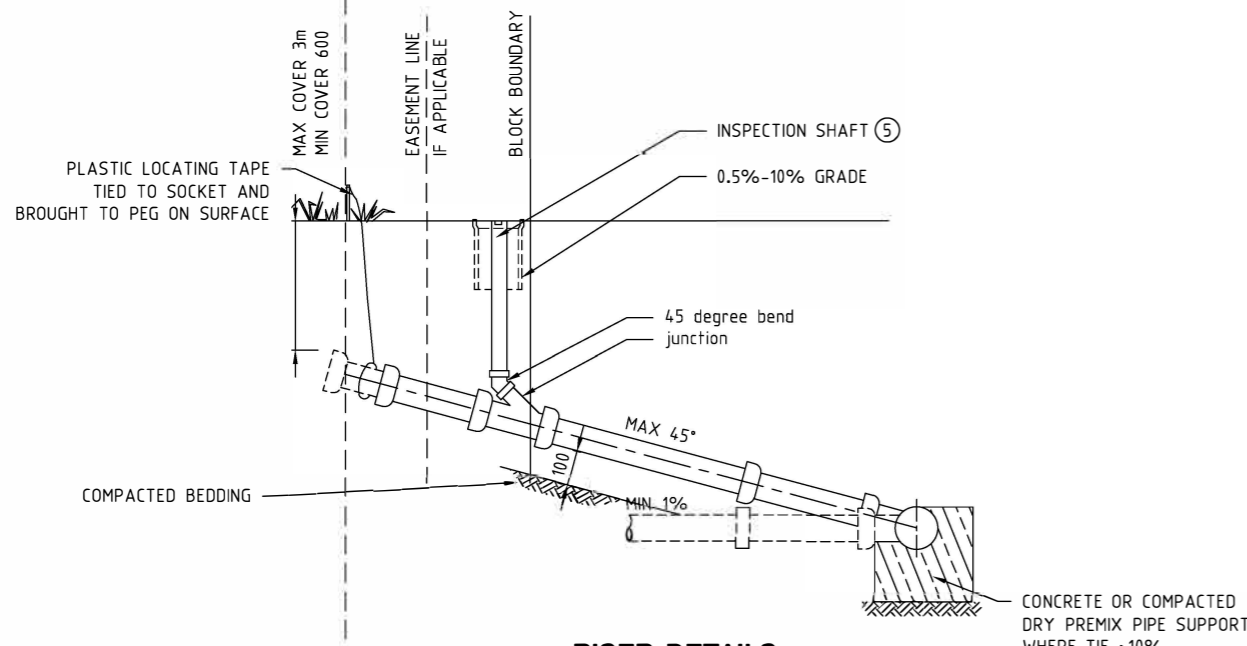


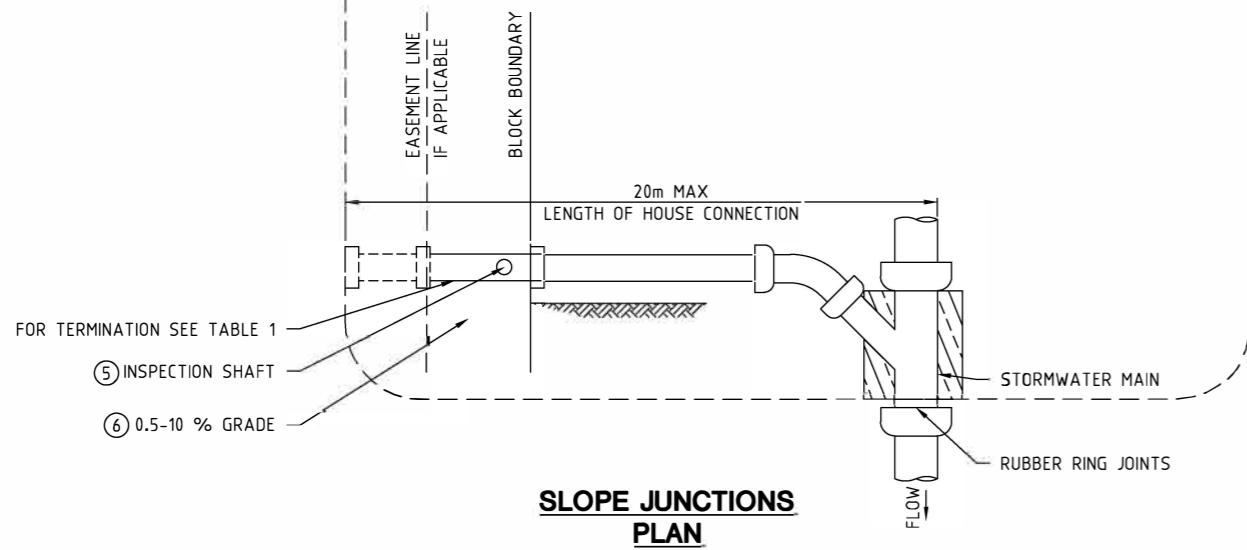
**RISER DETAILS
ELEVATION**

FOR DEPTHS BETWEEN 3.5m AND 6m

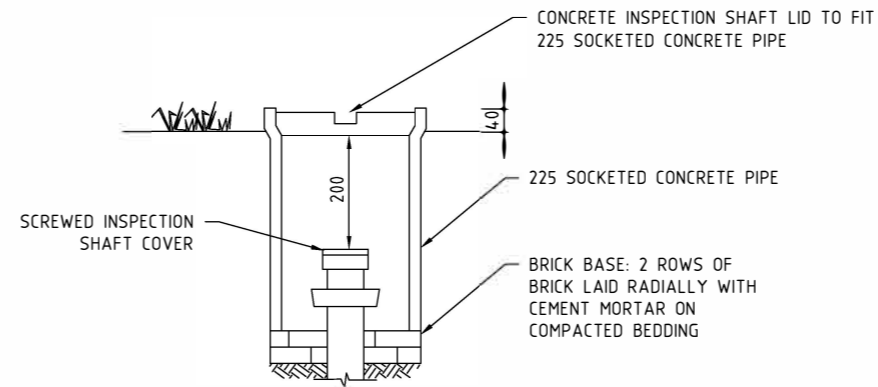


**RISER DETAILS
ELEVATION**

FOR DEPTHS LESS THAN 3.5m



**SLOPE JUNCTIONS
PLAN**



**INSPECTION SHAFT
DETAIL A**

NOTES:

1. REFER TO DRAWING ACTSD-0000 FOR GENERAL NOTES.
2. MATERIALS USED IN BEDDING AND BACKFILLING SHALL COMPLY WITH MITS03.
3. ALL SERVICE TIES SHALL TERMINATE IN A SEALED PIPE SOCKET WITH A PLASTIC LOCATING TAPE TIED TO THE SOCKET AND BROUGHT TO A PEG ON THE SURFACE.
4. MINIMUM PIPE DIAMETER 100mm.
5. ALL NEW SERVICE CONNECTIONS SHALL INCLUDE AN INSPECTION SHAFT. INSPECTION SHAFT TO BE LOCATED 0.5m INSIDE BOUNDARY.
6. WHERE PIPE GRADES ARE HIGHER THAN 7% SCOUR STOPS SHALL BE CONSTRUCTED IN ACCORDANCE WITH MITS03.

TABLE 1 ; TERMINATION OF SERVICE TIES

LOCATION OF STORMWATER MAIN	TERMINATION POINT
(i) WITHIN BLOCK TO BE SERVED	AT SOCKET OF JUNCTION OFF MAIN PAST EDGE OF EASEMENT
(ii) ADJACENT TO BUT OUTSIDE BLOCK TO BE SERVED	1m INSIDE BOUNDARY LINE OF BLOCK TO BE SERVED
(iii) WITHIN ROAD RESERVATION	1m INSIDE BOUNDARY LINE OF BLOCK TO BE SERVED



STANDARD DRAWING

TYPICAL SERVICE CONNECTIONS

NOT TO SCALE

Authorised: _____

Latest Revision Details

Rev	Amendment	Date
0	BASED ON DRG ST-0001	14/01/19

Drawing No.	Revision
ACTSD-0802	0