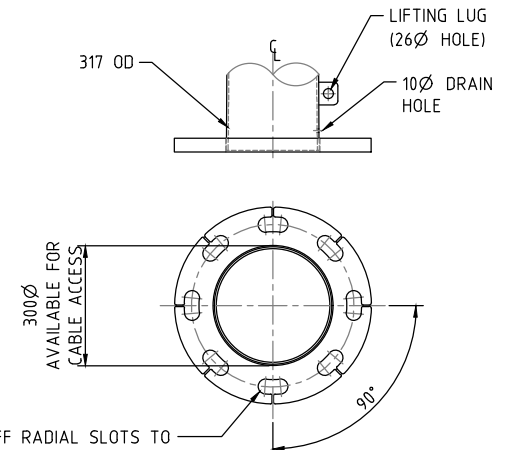
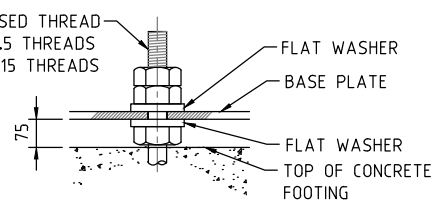
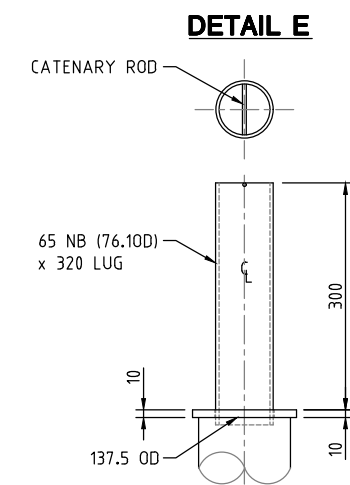
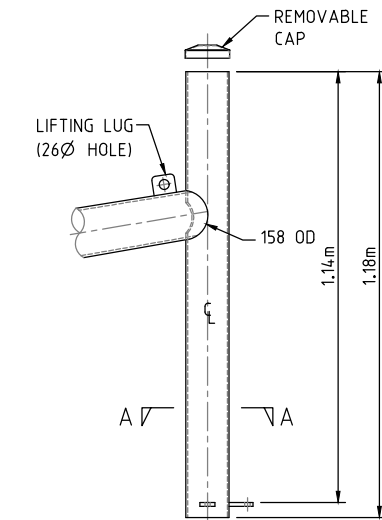
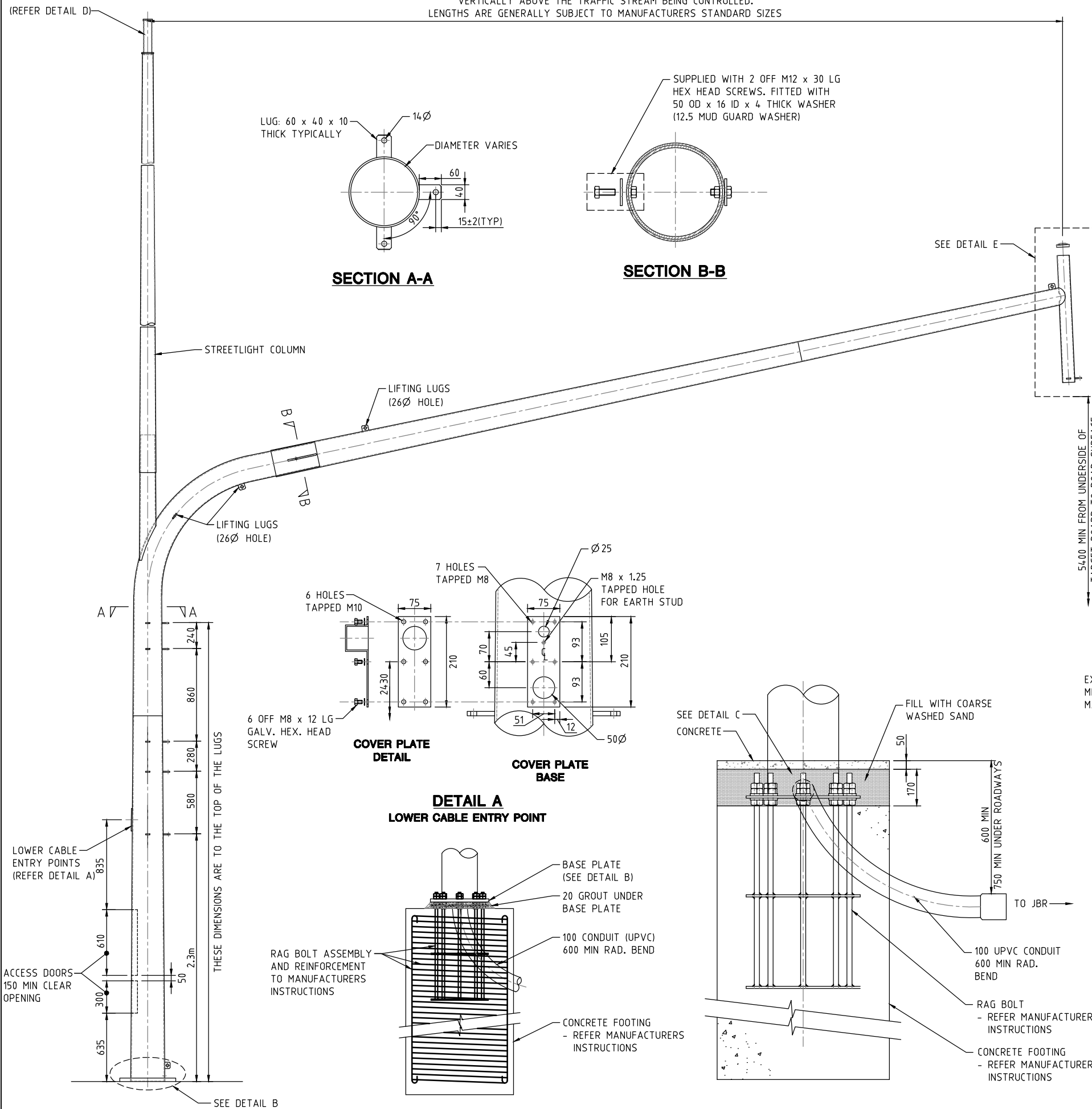


WHERE PRACTICABLE THE LANTERN SHOULD BE LOCATED VERTICALLY ABOVE THE TRAFFIC STREAM BEING CONTROLLED. LENGTHS ARE GENERALLY SUBJECT TO MANUFACTURERS STANDARD SIZES



COMINED USE MAST ARM POST

MAST ARM FOOTING


JOINT USE POST FOOTING

DETAIL B - BASE PLATE

NOTES:

- 1 FINISH OF MAST ARM POST TO BE FULLY HOT DIP GALVANIZED.
- 2 THE CONTRACTOR SHALL ENSURE THAT THE DOUBLE-DAVIT TRAFFIC SIGNAL POST SUPPLIED COMPLIES WITH THE ELECTRICAL AUTHORITY REQUIREMENTS, IS COMPATIBLE WITH THE SIGNAL HEAD FIXING REQUIREMENTS AND THAT ALL NECESSARY HOLES ARE PROPERLY LOCATED FOR THE SIGNAL AND STREET LIGHT CABLING
- 3 WHOLE RAG BOLT ASSEMBLY TO BE GALVANISED
- 4 MAST ARMS TO BE CONSTRUCTED IN ACCORDANCE WITH AS 2979-(LATEST EDITION)
- 5 AFTER LEVELLING POLE A NON SHRINKING GROUT IS TO BE APPLIED IN THE BASE SLOTS, AROUND THE BOLTS AND BETWEEN THE BASE PLATE AND FOOTING
- 6 MAST ARM OUTREACH TO BE DESIGNED TO SUPPORT TYP. LOADING OF 3 x 6 ASPECT LANTERNS. ADDITIONAL WIND LOADING REQUIREMENTS FOR TRAFFIC SIGNAGE TO BE CONSIDERED.
- 7 MAST ARM POST TO BE SUPPLIED WITH CAPPED SPIGOT AND BE ABLE TO BE CONVERTED TO JOINT USE TRAFFIC SIGNAL/ROAD LIGHT MAST ARM BY REMOVING SPIGOT CAP AND INSTALLING LUMINAIRE TRANSITION PIECE AND LIGHTING OUTREACH.
- 8 ALL DIMENSIONS ARE IN mm UNLESS SHOWN OTHERWISE

BASED ON 8.5m OUTREACH ARM
INGAL EPS DRAWINGS AD1494, AD1468, AD1469, AD1470, AD1471, AD1472, AD3491 AND GA1236, GA1237 AND GA1238 (OR APPROVED EQUIVALENT)



ACT
Government

STANDARD DRAWING

**TRAFFIC SIGNALS
MAST ARM AND JOINT
USE POST DETAILS**

Authorised: *[Signature]*

Latest Revision Details

1	CONDUIT RADIUS REVISED	19-12-18
0	BASED ON ACTPW DRG S/803/5	05-04-17

Rev. Amendment Date

Drawing No. ACTSD-3915 Revision 1