

FRONT VIEW

SECTION A-A

BASE SECTION B-B

NOTES:

1. SWITCHBOARD CONSTRUCTION MUST COMPLY WITH ENCLOSURE RATING IP54 RATING
2. REFER TAMS DWG DS12-02-02 FOR CONCRETEFOOTING DETAILS
3. SWITCHBOARD CUBICLE 1.5mm ZINCSEAL
4. SWITCHBOARD DOORS 2.0mm ZINCSEAL
5. ActewAGL TO INSTALL NECESSARY LABELS PRIOR TO ENERGISATION
6. DOOR LOCKS WILL BE REPLACED BY ActewAGL MASTERLOCK PRIOR TO ENERGISATION
7. STREETLIGHT CUBICLE COLOUR IS TO BE BATTLESHIP GREY
8. REFER TO TAMS DWG DS12-01-17 FOR ActewAGL CONNECTION ARRANGEMENT

\*THIS DRAWING HAS BEEN REPRODUCED BY THE ACT GOVERNMENT WITH PERMISSION FROM ACTEWAGL. THIS DRAWING HAS BEEN REPRODUCED USING INFORMATION FROM ACT ELECTRICITY AUTHORITY DRAWING 796-8-006 DATED 10/09/05



DESIGN STANDARD  
URBAN INFRASTRUCTURE

Authorised Signature

Drawn: NC \* Date

Project Engineer: WC \* Date

STREETLIGHT CONTROL  
CUBICLE

Scale: NOT TO SCALE

Date: 08/11/06

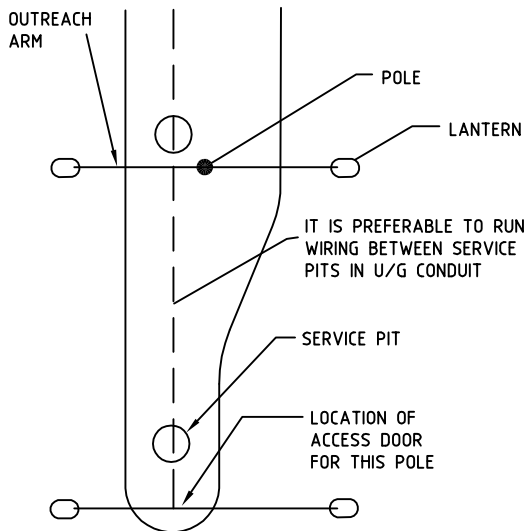
AutoCAD File

Drawing No.

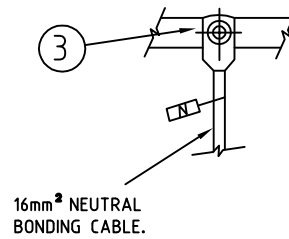
DS12-01-25

Revision No.

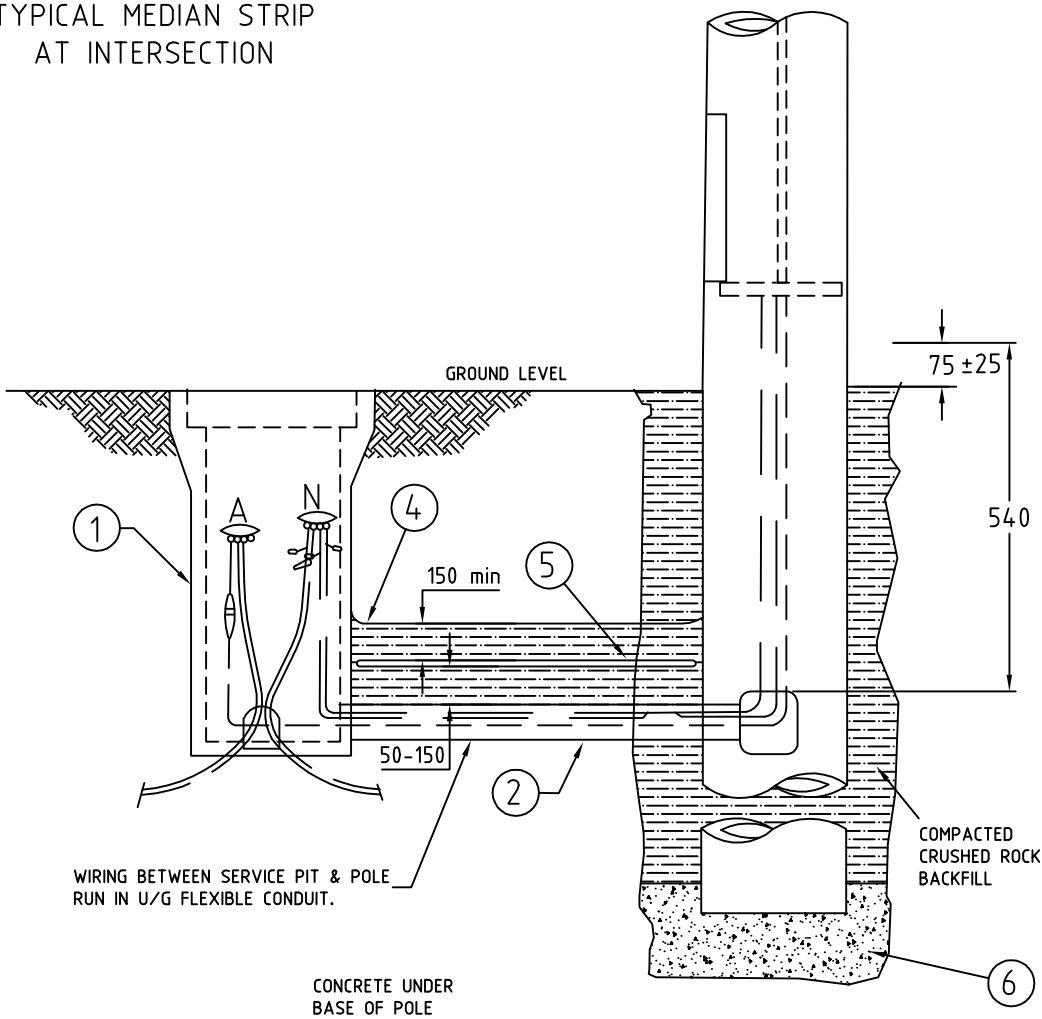
0



TYPICAL MEDIAN STRIP AT INTERSECTION




NEUTRAL BOND STUD DETAILS



6	CONCRETE PREMIX DRY DENSE AGG.	3
5	COVER. U/G CABLE 1200x200, STRAIGHT POLY.	AR
4	TAPE, CAUTION. ELEC CABLE. BELOW. 150 WIDE	ROLL
3	LUG. CABLE CRIMP 16mm <sup>2</sup> . M6 SCREW	1
2	CONDUIT. FLEXIBLE. PVC GREY Ø 25 (LARGER SIZE ACCEPTABLE)	AR
1	SERVICE PIT COMPONENTS. BODY	1
	LID	1
ITEM	DESCRIPTION	QTY

**ACT GOVERNMENT**



**DESIGN STANDARD  
URBAN INFRASTRUCTURE**

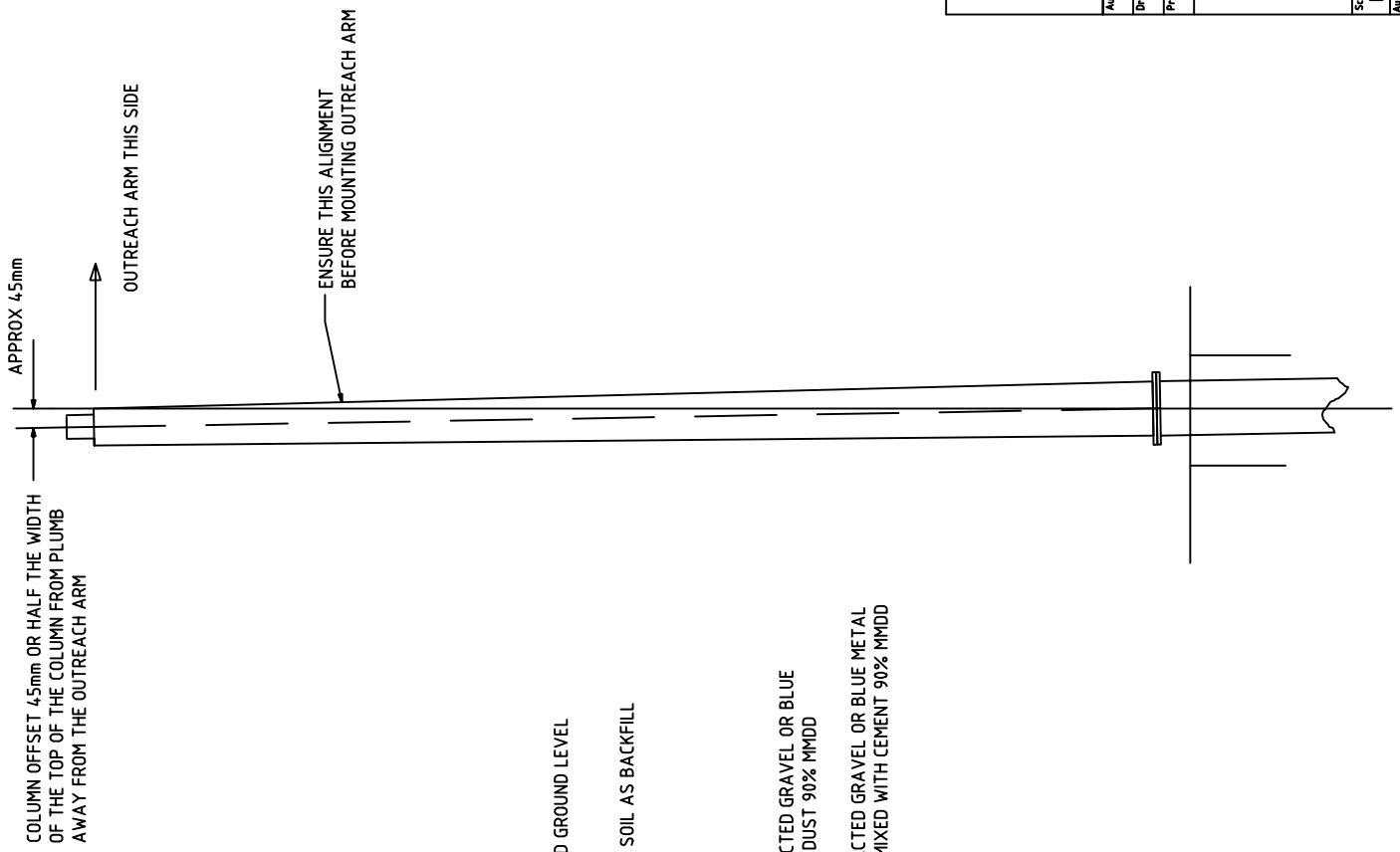
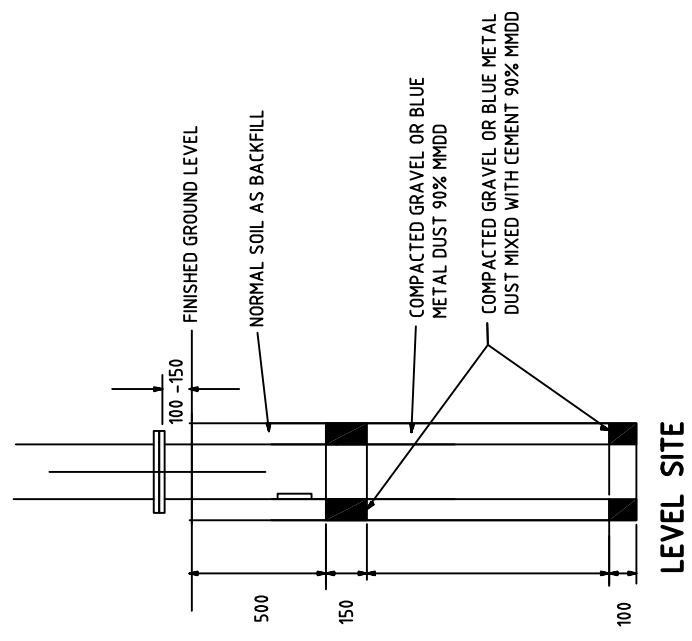
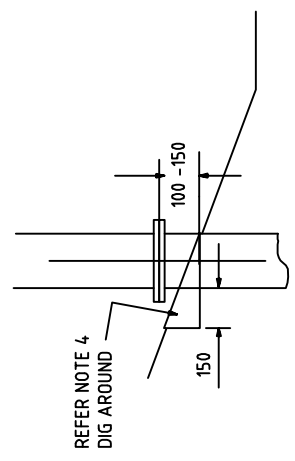
Authorised Signature	
Drawn <b>NC</b> *	Date
Project Engineer <b>WC</b> *	Date
<b>HIGH SPEED IMPACT ABSORBING POLE ELECTRICAL INSTALLATION DETAILS</b>	
Scale <b>NOT TO SCALE</b>	Date <b>29-01-2007</b>
AutoCAD File	
Drawing No. <b>DS12-01-26</b>	Revision No. <b>0</b>

\* THIS DRAWING HAS BEEN REPRODUCED BY THE ACT GOVERNMENT WITH PERMISSION FROM ActewAGL  
THIS DRAWING HAS BEEN REPRODUCED USING INFORMATION FROM ActewAGL DRAWING SP15/214/90 - DATED 19-09-2002

## **12.2 DS12-02 Footings**

**NOTES**

1. THIS METHOD OF INSTALLATION SHOULD ALSO BE FOLLOWED FOR ENERGY ABSORBING COLUMNS
2. FOR COLUMNS 6.5m OR LOWER USE NORMAL SOIL BACKFILL COMPACTED TO 90% MMD
3. USE TORQUE WRENCH TO TIGHTEN NUTS ON SLIPBASE NOMINAL TENSION 90Nm
4. DIG AROUND COLUMN AS SHOWN TO ALLOW WATER TO RUN PAST THE COLUMN WITHOUT ENTERING THE SLIP BASE ASSEMBLY
5. AVOID INSTALLING SLIP BASE COLUMNS WHERE FLOODING IS LIKELY USE IMPACT ABSORBING COLUMNS INSTEAD.
6. FOR CORRECT OPERATION OF SLIP BASE COLUMN MAXIMUM & MINIMUM HEIGHTS FROM G/C SHALL NOT BE EXCEEDED.



<b>DESIGN STANDARD URBAN INFRASTRUCTURE</b>	
Authorised Signature _____	Date _____
Drawn <b>NC</b>	Date _____
Project Engineer <b>WC</b>	Date _____
<b>STREETLIGHTING COLUMN INSTALLATION</b>	
Scale <b>NOT TO SCALE</b>	Date <b>14/09/06</b>
AutoCAD File _____	
Drawing No. <b>DS12-02-01</b>	
Revision No. <b>0</b>	

\*THIS DRAWING HAS BEEN REPRODUCED BY THE ACT GOVERNMENT WITH PERMISSION FROM ACTEWA/GL. THIS DRAWING HAS BEEN REPRODUCED USING INFORMATION FROM ACTEWA/GL DRAWING NO. 794-99-04 DATED 17/09/96

**PLUMB COLUMN AWAY FROM OUTREACH ARM**

Site Earthworks

The excavation for the new footings to be taken down to the depths shown on the drawing. Prior to pouring concrete the excavation is to be cleaned of all loose material and compacted to 90% maximum dry density.

Excavation is to be dry prior to pouring concrete.

ActewAGL Project Manager to determine the direction of conduits and footing alignment prior to the commencement of site excavations.

Concrete and Reinforcement

Concrete strength shall be 25 MPa  
Maximum aggregate size shall be 20mm

Concrete shall be well compacted

Materials and workmanship shall be in accordance with AS 3600 Concrete Structures

Reinforcement shall be in accordance with AS 1302 and AS 1304.  
Reinforcement size and positioning shall be as shown on the drawings.

Minimum laps shall be in accordance with the requirements of AS 3600, Section 13.

Minimum cover to reinforcement 75mm unless otherwise shown.

Reinforcement shall be supported in its correct position so as not to be displaced during concreting.

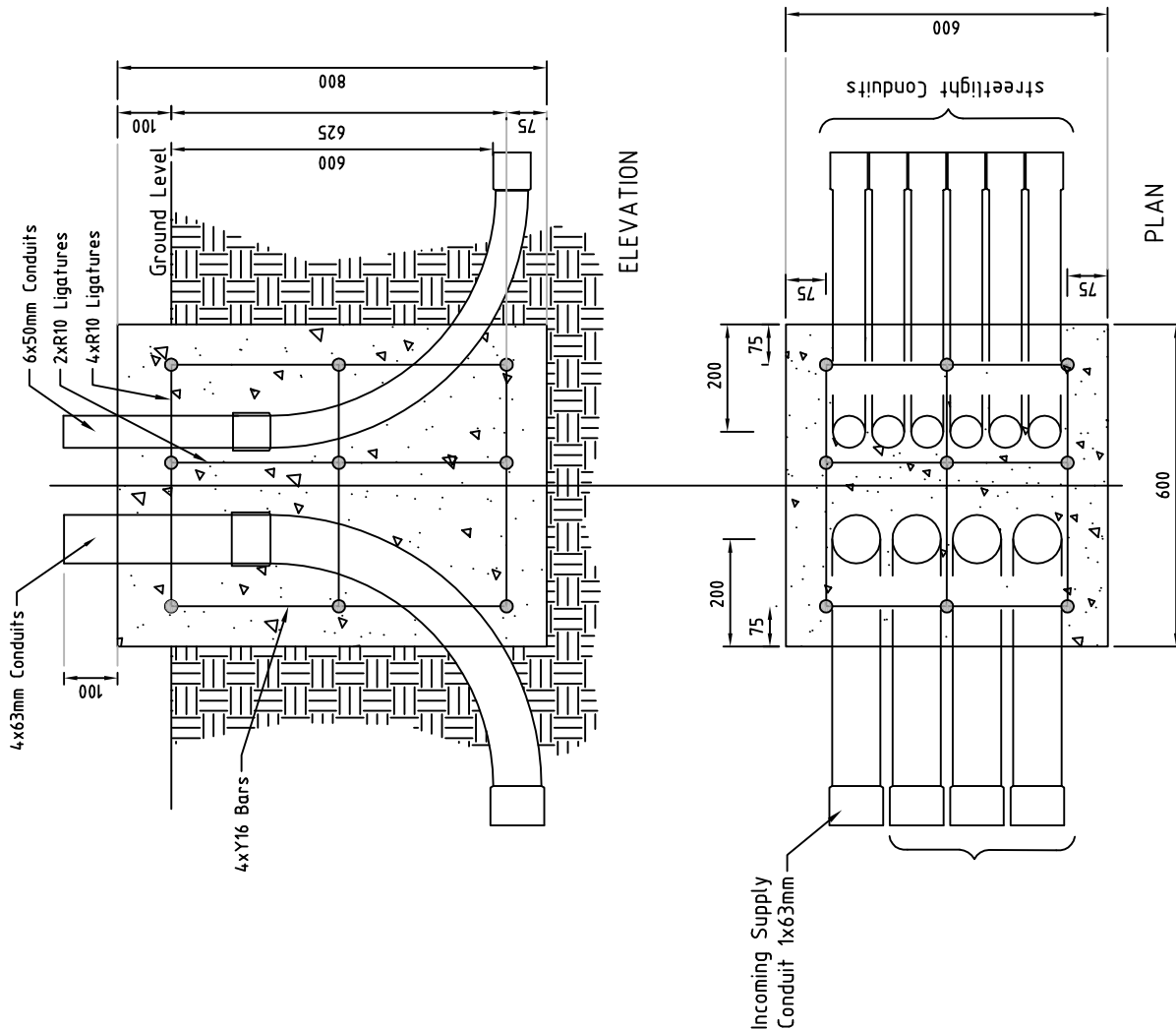
Provide bar chairs as necessary.

Control cubicle to be secured to base with dynabolts or similar.  
Concrete base shall be allowed to cure a minimum of seven days before fixing cubicle.

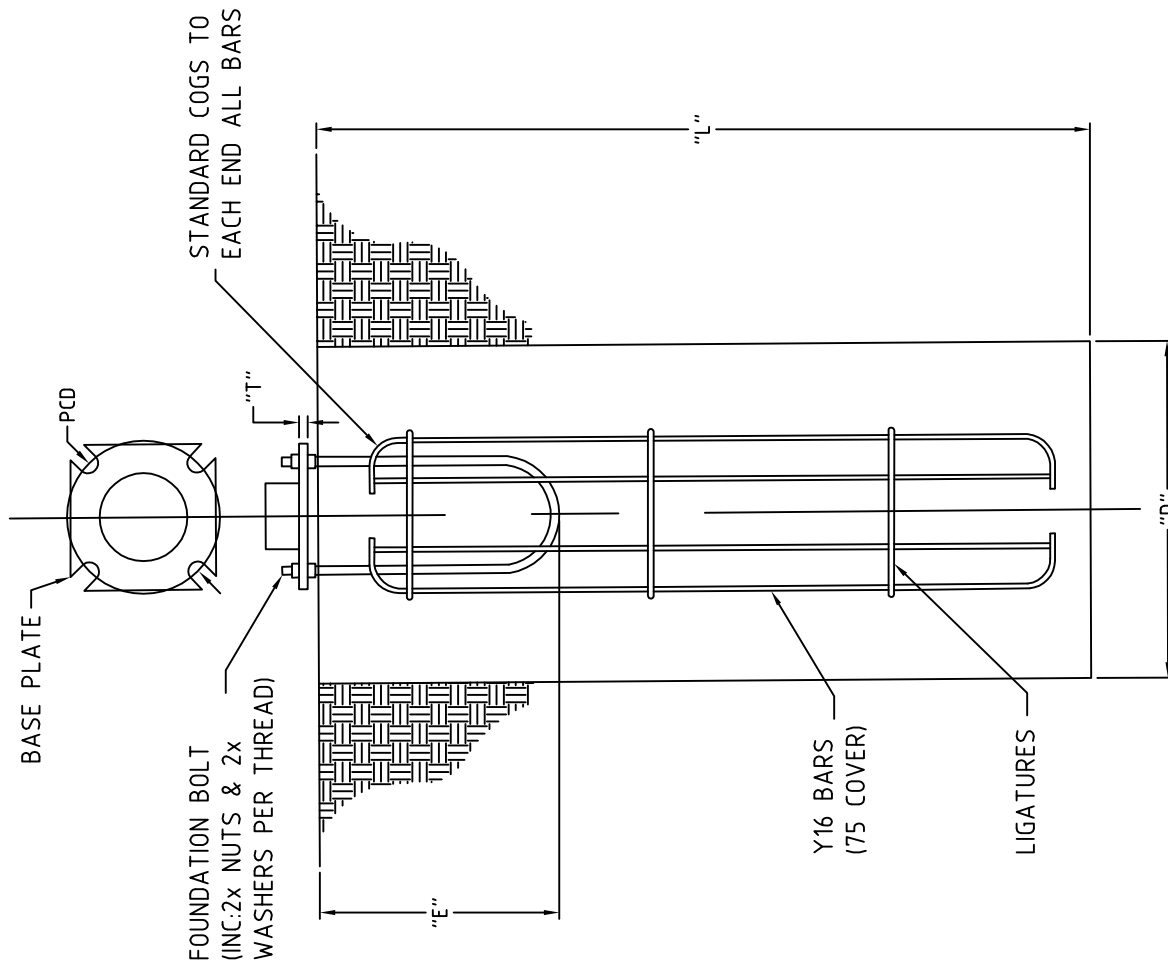
All conduits to have large radius bends.  
Elbow bends are not acceptable.

NOTES

1. All dimensions are in millimetres
2. Refer to DS12-29 for Streetlight Control Cubicle details



<b>DESIGN STANDARD</b> <b>URBAN INFRASTRUCTURE</b>	
Authorized Signature	Date
Drawn NC	Date
Project Engineer WC	Date
<b>CONCRETE FOOTING DETAILS</b> <b>STREETLIGHT CONTROL CUBICLE</b>	
Scale	Date
NOT TO SCALE	14/09/06
AutoCAD File	
Drawing No.	Revision No.
<b>DS12-02-02</b>	<b>0</b>



POLE HEIGHT	FOUNDATION BOLT (mm)	"T" (mm)	"D" (mm)	"L" (mm)	"E" (mm)	BARS	LIGATURES
3 METRE	16x550x350 PCD	16	610	1470	MIN 400	Y16	R6 500 C/C
4 METRE	16x550x350 PCD	16	610	1660	MIN 400	Y16	R6 500 C/C
5 METRE	20x550x350 PCD	20	762	1660	MIN 400	Y16	R6 500 C/C
6 METRE	20x550x350 PCD	20	762	1670	MIN 400	Y16	R6 500 C/C
8 METRE	20x550x350 PCD	20	762	1800	MIN 400	Y16	R6 500 C/C
9 METRE	24x550x350 PCD	25	762	1970	MIN 400	Y16	R6 500 C/C
10 METRE	24x550x350 PCD	25	762	1970	MIN 400	Y16	R8 500 C/C
12 METRE	24x550x350 PCD	25	762	2250	MIN 400	Y16	R8 500 C/C
15 METRE	30x850x466 PCD	30	762	2750	MIN 700	Y16	R8 500 C/C
18 METRE	30x900x500 PCD	30	762	2750	MIN 750	Y16	R10 500 C/C
20 METRE	30x900x500 PCD	30	1028	2400	MIN 750	Y24	R10 500 C/C

**IMPORTANT NOTE**

NEITHER VICOLE OR ROADS ACT ACCEPT RESPONSIBILITY FOR THE FOOTING DETAILS GIVEN. ALL FOOTING DETAILS ARE INDICATIVE ONLY. FOOTING SIZES WILL VARY ACCORDING TO A NUMBER OF FACTORS INCLUDING SOIL CONDITION, WIND LOADING AND TERRAIN CATEGORIES. IN ALL INSTANCES IT IS THE RESPONSIBILITY OF THE CONTRACTOR TO OBTAIN ENGINEERS COMPUTATIONS AND SPECIFIC COLUMN MANUFACTURERS INFORMATION TO DETERMINE THE FOOTING DETAIL REQUIRED FOR EACH SITE. NOTE THE ABOVE FOOTING DETAILS ARE BASED ON TERRAIN CAT 2, CONCRETE STRENGTH OF 32MPa AND AN ALLOWABLE LATERAL SOIL BEARING OF 50KPa PER METRE DEPTH.



Authorized Signature

Drawn NC

Date

Project Engineer WC

Date

**INDICATIVE FOOTING DETAILS FOR OCTAGONAL COLUMNS**

Scale NOT TO SCALE

Date 14/09/06

AutoCAD File

Drawing No.

**DS12-02-03**

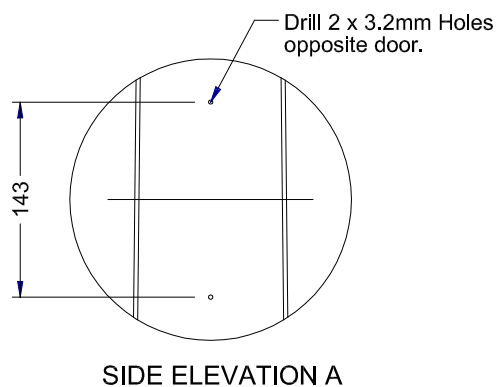
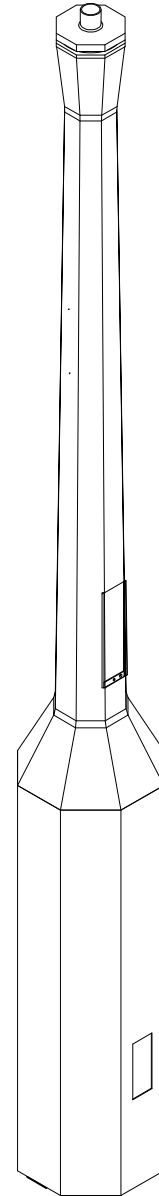
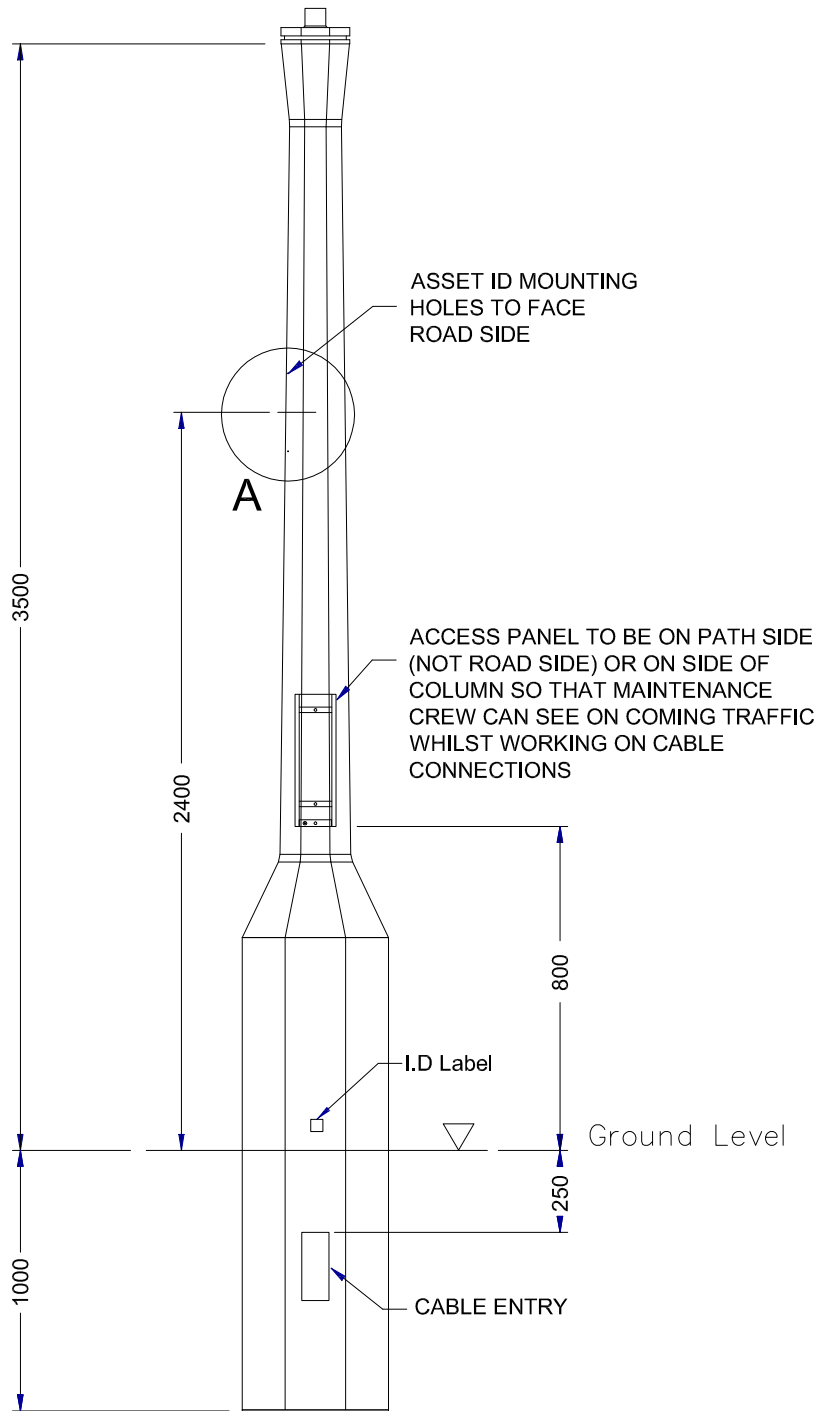
Revision No.


**0**

## **12.3 DS12-03 Columns**

**Notes**

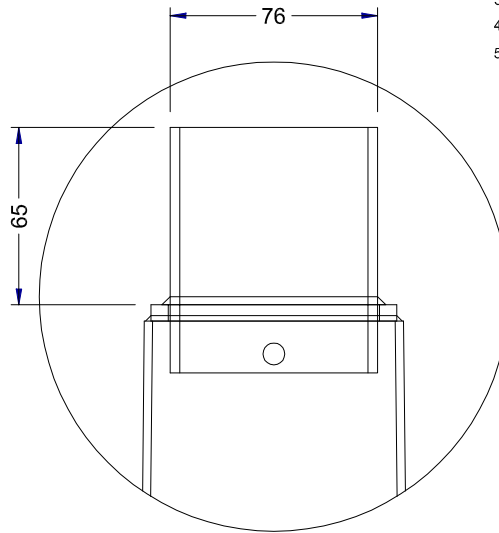
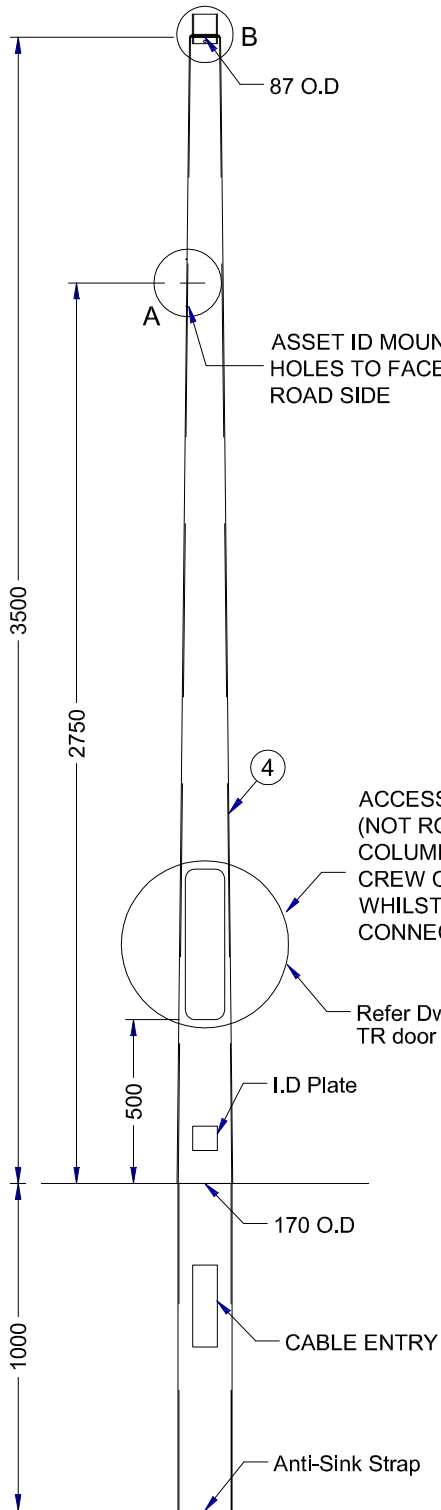
1. All dimensions shown are in mm.
2. Column design to comply with AS 1170 & AS 1798.
3. All welding to comply with AS 1554.
4. Galvanizing to conform to AS/NZS 4680.
5. Paint finish to AS 3887 category long term.



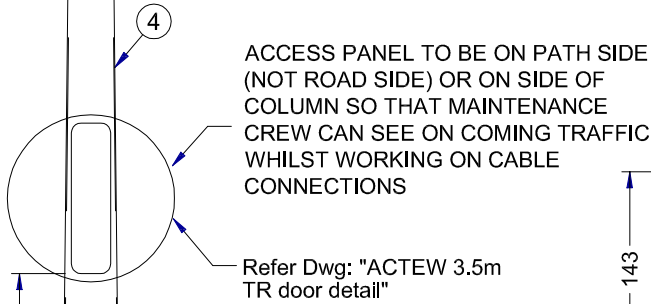
 <b>ACT GOVERNMENT</b> <b>DESIGN STANDARD</b> <b>URBAN INFRASTRUCTURE</b>	
Authorised Signature	
Drawn	NC *      Date
Project Engineer	WC *      Date
COMPLAP CONCRETE STREETLIGHT COLUMN	
Scale	Date
NOT TO SCALE	07/08/07
AutoCAD File	
Drawing No.	Revision No.
DS12-03-01	0

\* THIS DRAWING HAS BEEN REPRODUCED BY THE ACT GOVERNMENT WITH PERMISSION FROM VICPOLE.  
 THIS DRAWING HAS BEEN REPRODUCED USING INFORMATION FROM VICPOLE DRAWING Complap Concrete Lightpole.pwd - DATED 11/05/05





DETAIL B



SIDE ELEVATION A

**Notes**


1. All dimensions shown are in mm.
2. Column design to comply with AS 1170 & as 1798.
3. All welding to comply with AS 1554.
4. Galvanizing to conform to AS/NZS 4680.
5. Paint finish to AS 3887 category long term.

ACCESS PANEL TO BE ON PATH SIDE (NOT ROAD SIDE) OR ON SIDE OF COLUMN SO THAT MAINTENANCE CREW CAN SEE ON COMING TRAFFIC WHILST WORKING ON CABLE CONNECTIONS

Refer Dwg: "ACTEW 3.5m TR door detail"

Drill 2 x 3.2mm Holes opposite door.

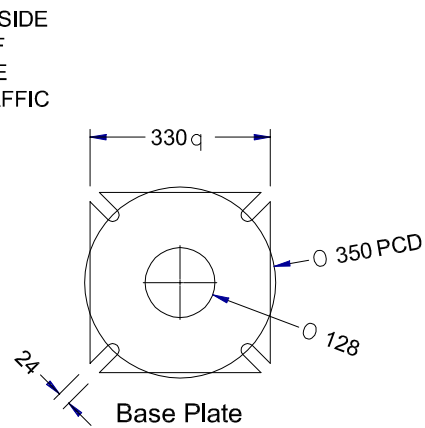
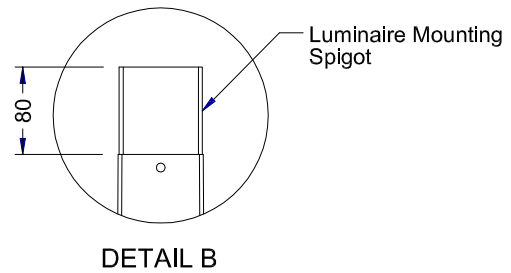
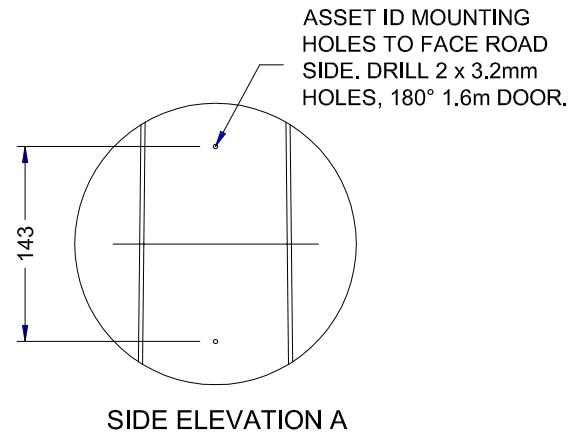
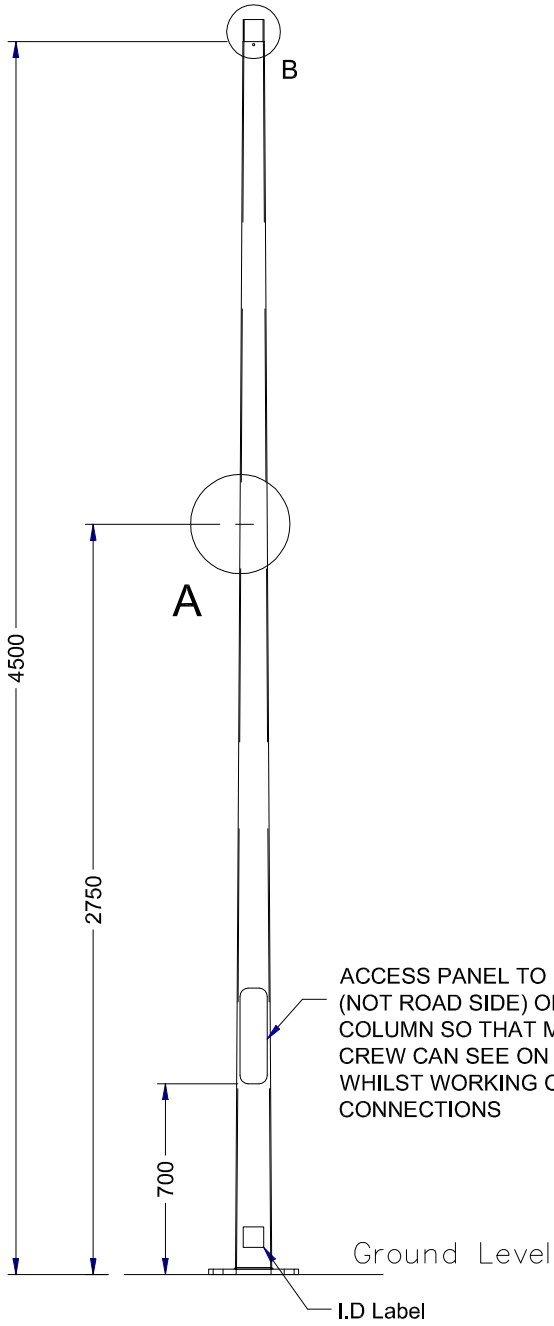
\* THIS DRAWING HAS BEEN REPRODUCED BY THE ACT GOVERNMENT WITH PERMISSION FROM VICPOLE.  
THIS DRAWING HAS BEEN REPRODUCED USING INFORMATION FROM VICPOLE DRAWING 3.5m Tapered Column.pwd - DATED 18/01/06

 <b>ACT GOVERNMENT</b> <b>DESIGN STANDARD</b> <b>URBAN INFRASTRUCTURE</b>	
Authorised Signature	
Drawn	NC *      Date
Project Engineer	WC *      Date
<b>3.5m TAPERED</b> <b>STREETLIGHT COLUMN</b>	
Scale	Date
NOT TO SCALE	07/08/07
AutoCAD File	
Drawing No.	Revision No.
DS12-03-02	0

**Notes**

1. All dimensions shown are in mm.
2. Column design to comply with AS 1170 & AS 1798.
3. All welding to comply with AS 1554.
4. Galvanizing to conform to AS/NZS 4680.
5. Paint finish to AS 3887 category long term.


Drill 2 x 3.2mm Holes opposite door.



ACCESS PANEL TO BE ON PATH SIDE (NOT ROAD SIDE) OR ON SIDE OF COLUMN SO THAT MAINTENANCE CREW CAN SEE ON COMING TRAFFIC WHILST WORKING ON CABLE CONNECTIONS

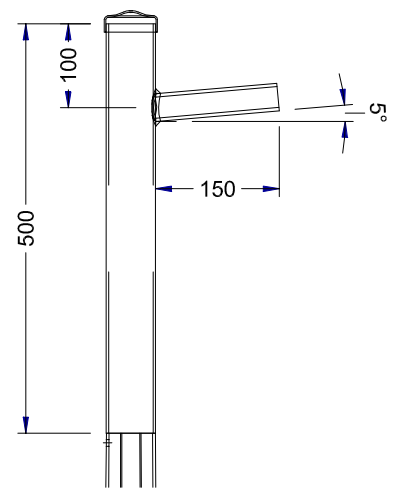
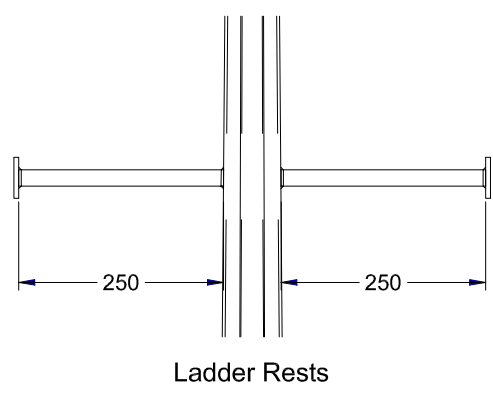
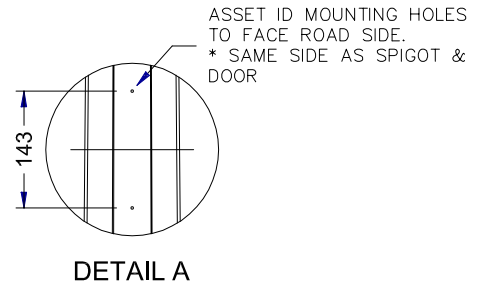
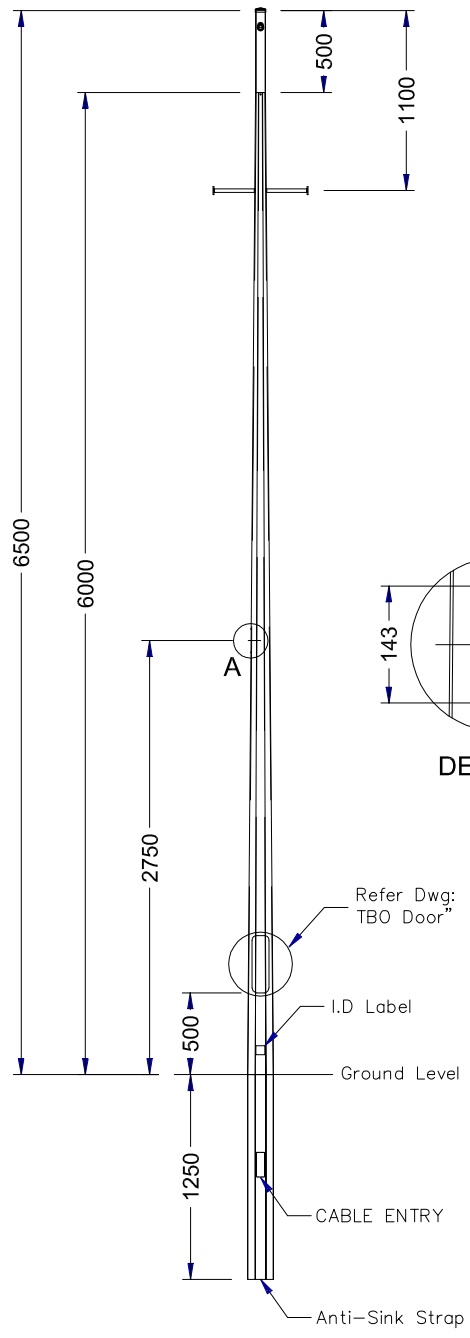
Ground Level

I.D Label


 <b>ACT GOVERNMENT</b> <b>DESIGN STANDARD</b> <b>URBAN INFRASTRUCTURE</b>	
Authorised Signature	
Drawn NC *	Date
Project Engineer WC *	Date
<b>4.5m TAPERED</b> <b>STREETLIGHT COLUMN</b>	
Scale NOT TO SCALE	Date 07/08/07
AutoCAD File	
Drawing No. DS12-03-03	Revision No. 0

\* THIS DRAWING HAS BEEN REPRODUCED BY THE ACT GOVERNMENT WITH PERMISSION FROM VICPOLE.  
 THIS DRAWING HAS BEEN REPRODUCED USING INFORMATION FROM VICPOLE DRAWING 4.5m Tapered Column.pwd - DATED 18/01/06

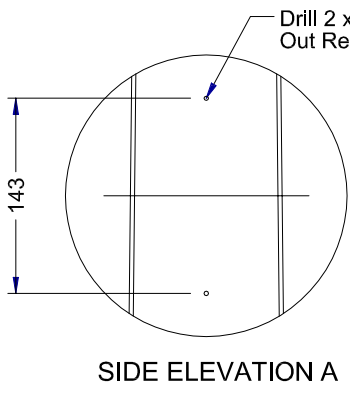
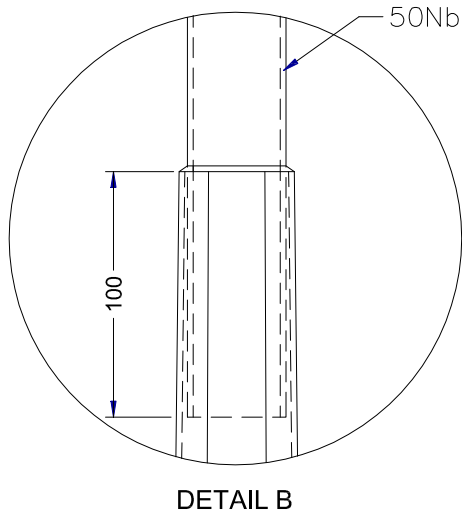
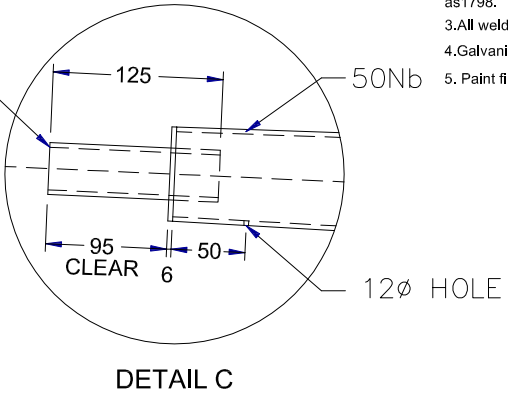
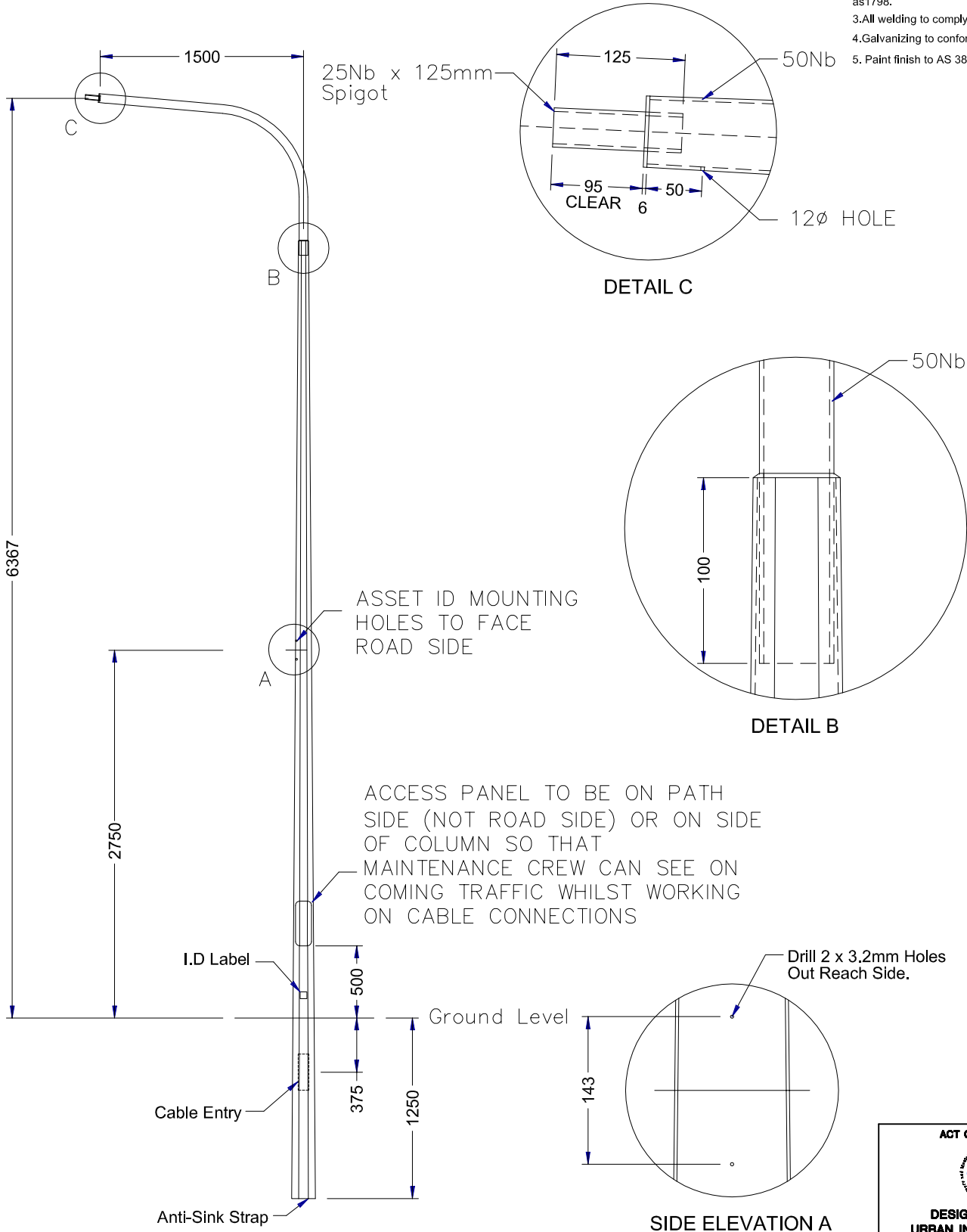
- Notes**
1. All dimensions shown are in mm.
  2. Column design to comply with AS 1170 & as1798.
  3. All welding to comply with AS 1554.
  4. Galvanizing to conform to AS/NZS 4680.
  5. Paint finish to AS 3887 category long term.




\* THIS DRAWING HAS BEEN REPRODUCED BY THE ACT GOVERNMENT WITH PERMISSION FROM VICPOLE.  
 THIS DRAWING HAS BEEN REPRODUCED USING INFORMATION FROM VICPOLE DRAWING 6.5m Taper cw Ladder Rest.pwd - DATED 18/01/06

 <b>ACT GOVERNMENT</b> <b>DESIGN STANDARD</b> <b>URBAN INFRASTRUCTURE</b>	
Authorised Signature	
Drawn	NC * Date
Project Engineer	WC * Date
6.5m TAPERED STREETLIGHT LANEWAY COLUMN WITH LADDER REST	
Scale	Date
NOT TO SCALE	07/08/07
AutoCAD File	
Drawing No.	Revision No.
DS12-03-04	0

- Notes**
1. All dimensions shown are in mm.
  2. Column design to comply with AS 1170 & as1798.
  3. All welding to comply with AS 1554.
  4. Galvanizing to conform to AS/NZS 4680.
  5. Paint finish to AS 3887 category long term.

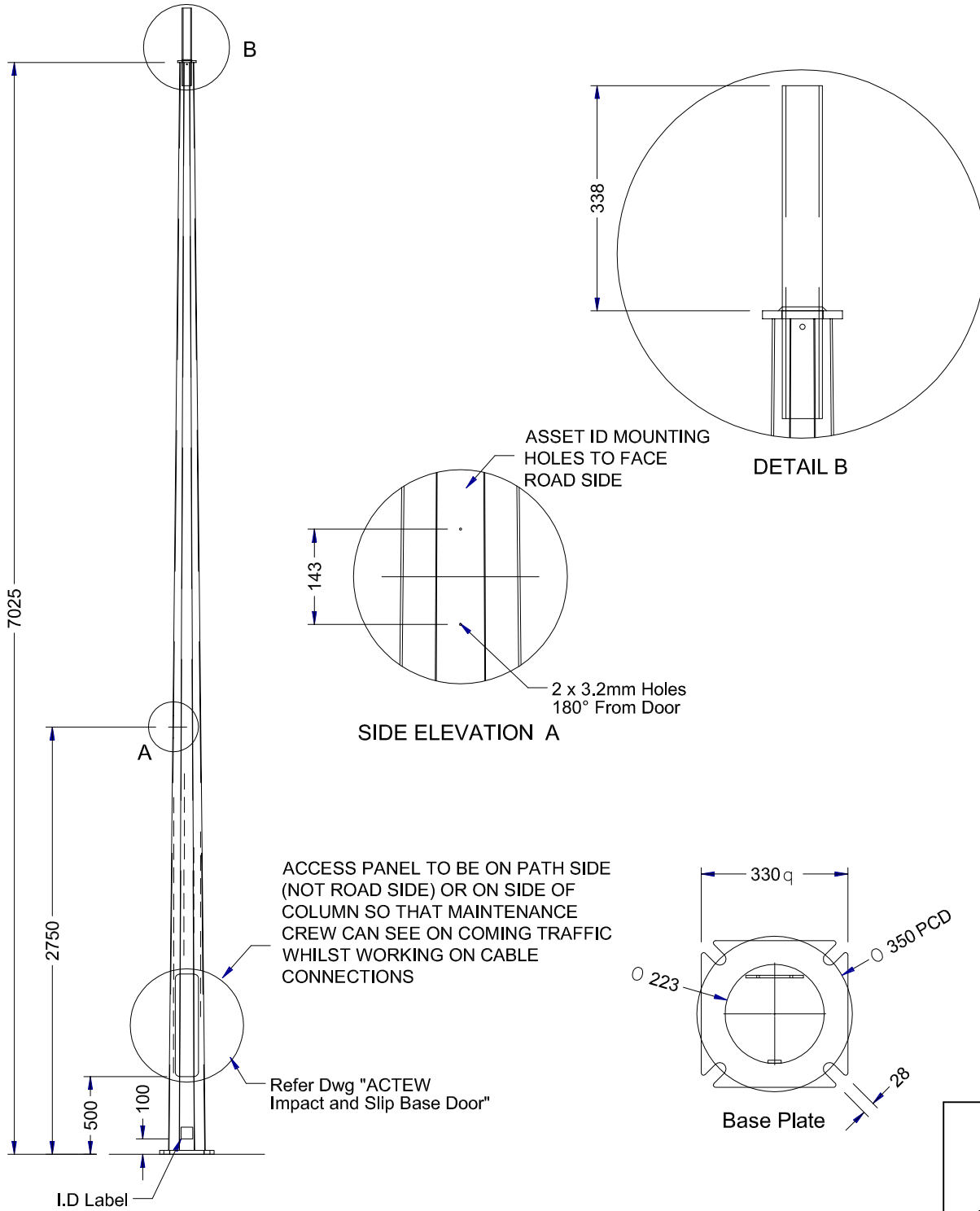


\* THIS DRAWING HAS BEEN REPRODUCED BY THE ACT GOVERNMENT WITH PERMISSION FROM VICPOLE.  
 THIS DRAWING HAS BEEN REPRODUCED USING INFORMATION FROM VICPOLE DRAWING VPCW0255ACT - 2.pwd - DATED 05/07/06


 <b>ACT GOVERNMENT</b> <b>DESIGN STANDARD</b> <b>URBAN INFRASTRUCTURE</b>	
Authorised Signature	
Drawn	NC * Date
Project Engineer	WC * Date
<b>6.5m TAPERED OCTAGONAL</b> <b>SINGLE</b> <b>STREETLIGHT</b>	
Scale	Date
NOT TO SCALE	07/08/07
AutoCAD File	
Drawing No.	Revision No.
DS12-03-05	0

**Notes**

1. All dimensions shown are in mm.
2. Column design to comply with AS 1170 & AS 1798.
3. All welding to comply with AS 1554.
4. Galvanizing to conform to AS/NZS 4680.
5. Paint finish to AS 3887 category long term.

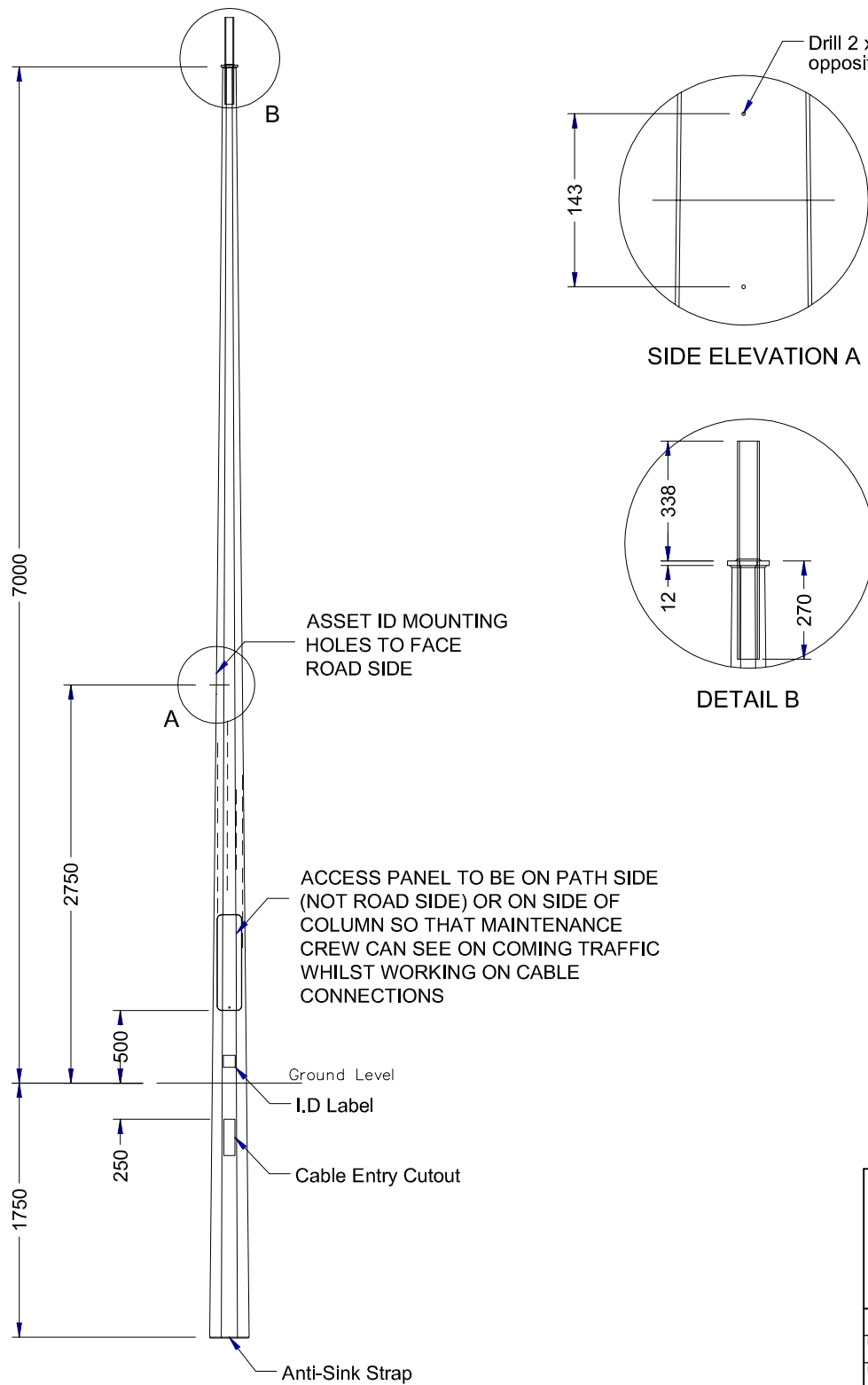


\* THIS DRAWING HAS BEEN REPRODUCED BY THE ACT GOVERNMENT WITH PERMISSION FROM INGAL.  
 THIS DRAWING HAS BEEN REPRODUCED USING INFORMATION FROM VICPOLE DRAWING 9.0m IAC BPM.pwd - DATED 18/01/06


 <b>ACT GOVERNMENT</b> <b>DESIGN STANDARD</b> <b>URBAN INFRASTRUCTURE</b>	
Authorised Signature	
Drawn	NC * Date
Project Engineer	WC * Date
<b>9.0m IMPACT</b> <b>ABSORBING COLUMN</b> <b>BASE PLATE MOUNTED</b>	
Scale	Date
NOT TO SCALE	07/08/07
AutoCAD File	
Drawing No.	Revision No.
DS12-03-06	0

**Notes**

1. All dimensions shown are in mm.
2. Column design to comply with AS 1170 & as1798.
3. All welding to comply with AS 1554.
4. Galvanizing to conform to AS/NZS 4680.
5. Paint finish to AS 3887 category long term.

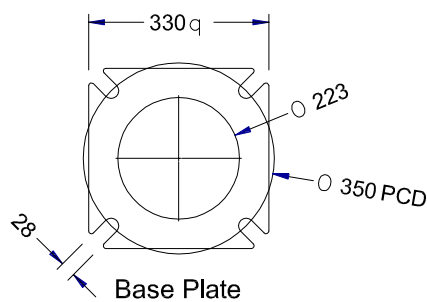
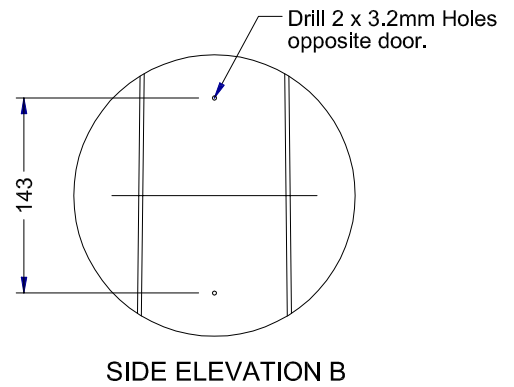
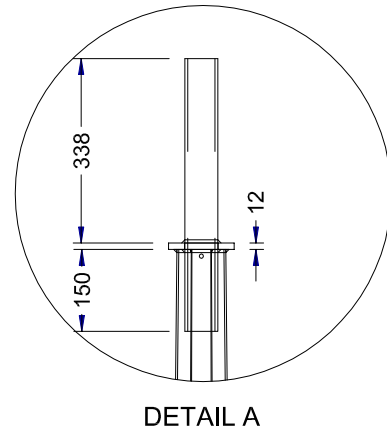
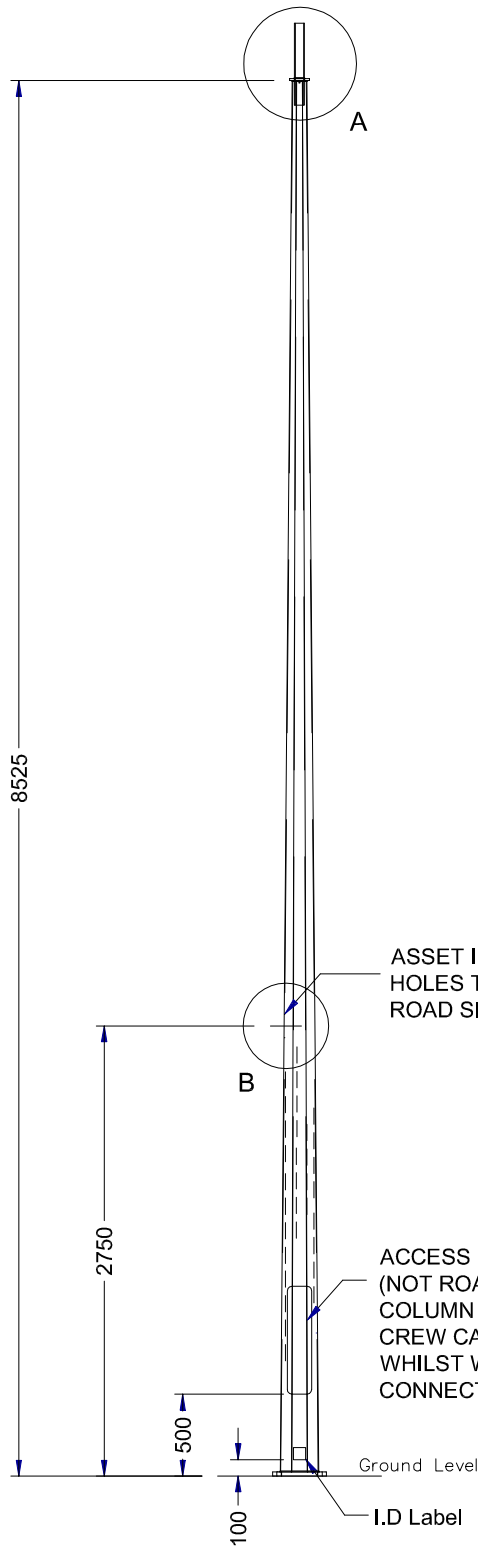



\* THIS DRAWING HAS BEEN REPRODUCED BY THE ACT GOVERNMENT WITH PERMISSION FROM INGAL.  
 THIS DRAWING HAS BEEN REPRODUCED USING INFORMATION FROM VICPOLE DRAWING 9.0m IAC IGM.pwd - DATED 18/01/06

 <b>ACT GOVERNMENT</b> <b>DESIGN STANDARD</b> <b>URBAN INFRASTRUCTURE</b>	
Authorised Signature _____	
Drawn <b>NC</b> *	Date _____
Project Engineer <b>WC</b> *	Date _____
<b>9.0m IMPACT</b> <b>ABSORBING COLUMN</b> <b>IN GROUND MOUNTED</b>	
Scale <b>NOT TO SCALE</b>	Date <b>07/08/07</b>
AutoCAD File _____	
Drawing No. <b>DS12-03-07</b>	Revision No. <b>0</b>

**Notes**

1. All dimensions shown are in mm.
2. Column design to comply with AS 1170 & as1798.
3. All welding to comply with AS 1554.
4. Galvanizing to conform to AS/NZS 4680.
5. Paint finish to AS 3887 category long term.

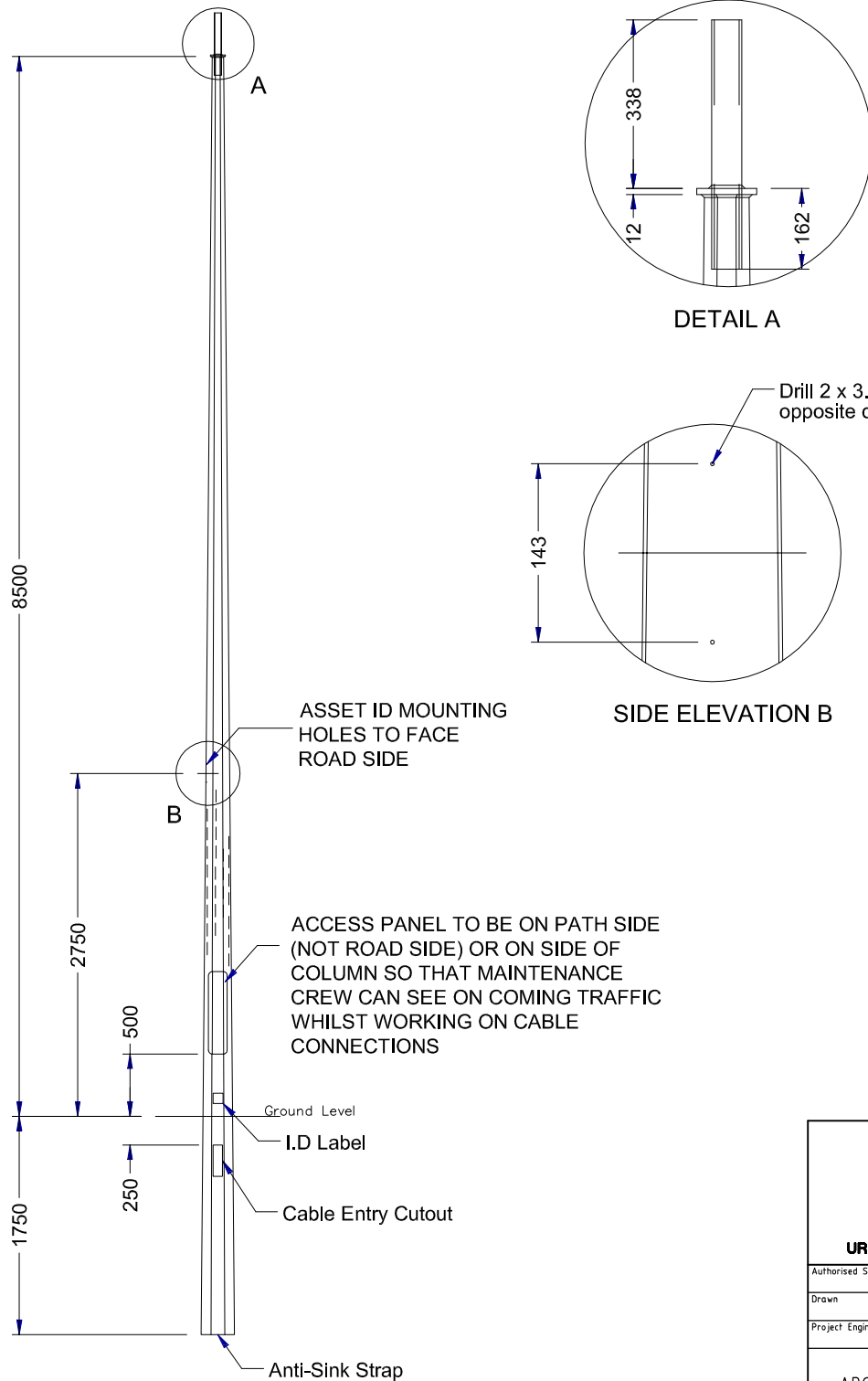



 <b>ACT GOVERNMENT</b> <b>DESIGN STANDARD</b> <b>URBAN INFRASTRUCTURE</b>	
Authorised Signature	
Drawn	NC *      Date
Project Engineer	WC *      Date
<b>10.5m IMPACT</b> <b>ABSORBING COLUMN</b> <b>BASE PLATE MOUNTED</b>	
Scale	Date
NOT TO SCALE	07/08/07
AutoCAD File	
Drawing No.	Revision No.
DS12-03-08	0

\* THIS DRAWING HAS BEEN REPRODUCED BY THE ACT GOVERNMENT WITH PERMISSION FROM INGAL.  
 THIS DRAWING HAS BEEN REPRODUCED USING INFORMATION FROM ACTEWAGL DRAWING 10.5m IAC BPM - DATED 18/01/06

**Notes**

1. All dimensions shown are in mm.
2. Column design to comply with AS 1170 & AS 1798.
3. All welding to comply with AS 1554.
4. Galvanizing to conform to AS/NZS 4680.
5. Paint finish to AS 3887 category long term.

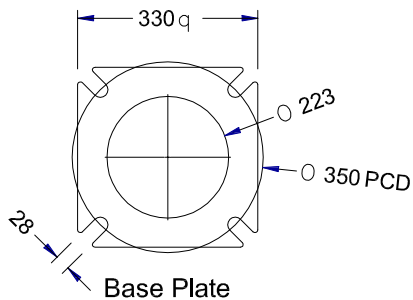
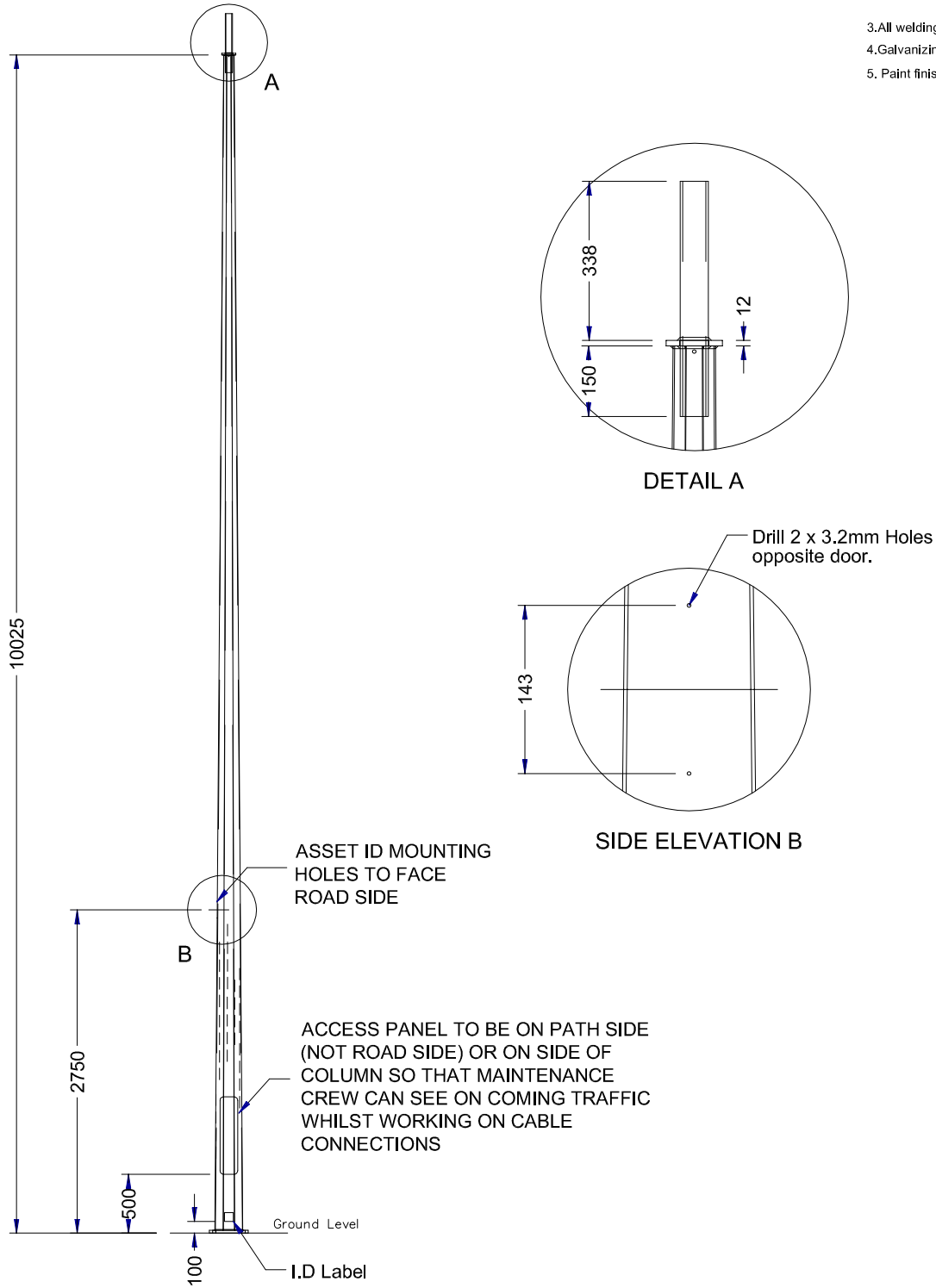


 <b>ACT GOVERNMENT</b> <b>DESIGN STANDARD</b> <b>URBAN INFRASTRUCTURE</b>	
Authorised Signature	
Drawn	NC * Date
Project Engineer	WC * Date
<b>10.5m IMPACT</b> <b>ABSORBING COLUMN</b> <b>IN GROUND MOUNTED</b>	
Scale	Date
NOT TO SCALE	07/08/07
AutoCAD File	
Drawing No.	Revision No.
DS12-03-09	0


\* THIS DRAWING HAS BEEN REPRODUCED BY THE ACT GOVERNMENT WITH PERMISSION FROM INGL.  
 THIS DRAWING HAS BEEN REPRODUCED USING INFORMATION FROM ACTEWAGL DRAWING 10.5m IAC IGM.pwd - DATED 18/01/06



1. All dimensions shown are in mm.
2. Column design to comply with AS 1170 &
3. All welding to comply with AS 1554.
4. Galvanizing to conform to AS/NZS 4680.
5. Paint finish to AS 3887 category long term.



\* THIS DRAWING HAS BEEN REPRODUCED BY THE ACT GOVERNMENT WITH PERMISSION FROM VICPOLE.  
 THIS DRAWING HAS BEEN REPRODUCED USING INFORMATION FROM ACTEWAGL DRAWING 12.0m IAC BPM.pwd - DATED 18/01/06

<b>ACT GOVERNMENT</b>  <b>DESIGN STANDARD</b> <b>URBAN INFRASTRUCTURE</b>	
Authorised Signature	
Drawn	NC *      Date
Project Engineer	WC *      Date
<b>12.0m IMPACT</b> <b>ABSORBING COLUMN</b> <b>BASE PLATE MOUNTED</b>	
Scale	Date
NOT TO SCALE	07/08/07
AutoCAD File	
Drawing No.	Revision No.
DS12-03-10	0

Ⓐ

**Notes**

1. All dimensions shown are in mm.
2. Column design to comply with AS 1170 & as1798.
3. All welding to comply with AS 1554.
4. Galvanizing to conform to AS/NZS 4680.
5. Paint finish to AS 3887 category long term.

ASSET ID MOUNTING HOLES TO FACE ROAD SIDE

ACCESS PANEL TO BE ON PATH SIDE (NOT ROAD SIDE) OR ON SIDE OF COLUMN SO THAT MAINTENANCE CREW CAN SEE ON COMING TRAFFIC WHILST WORKING ON CABLE CONNECTIONS

Ground Level

I.D Label


Cable Entry Cutout

Anti-Sink Strap

DETAIL A

Drill 2 x 3.2mm Holes opposite door.

SIDE ELEVATION B

 <b>ACT GOVERNMENT</b> <b>DESIGN STANDARD</b> <b>URBAN INFRASTRUCTURE</b>	
Authorised Signature	
Drawn	NC *      Date
Project Engineer	WC *      Date
<b>12.0m IMPACT</b> <b>ABSORBING COLUMN</b> <b>IN GROUND MOUNTED</b>	
Scale	Date
NOT TO SCALE	07/08/07
AutoCAD File	
Drawing No.	Revision No.
DS12-03-11	0

\* THIS DRAWING HAS BEEN REPRODUCED BY THE ACT GOVERNMENT WITH PERMISSION FROM INGAL.  
 THIS DRAWING HAS BEEN REPRODUCED USING INFORMATION FROM ACTEWAGL DRAWING 12.0m IAC IGM.pwd - DATED 18/01/06

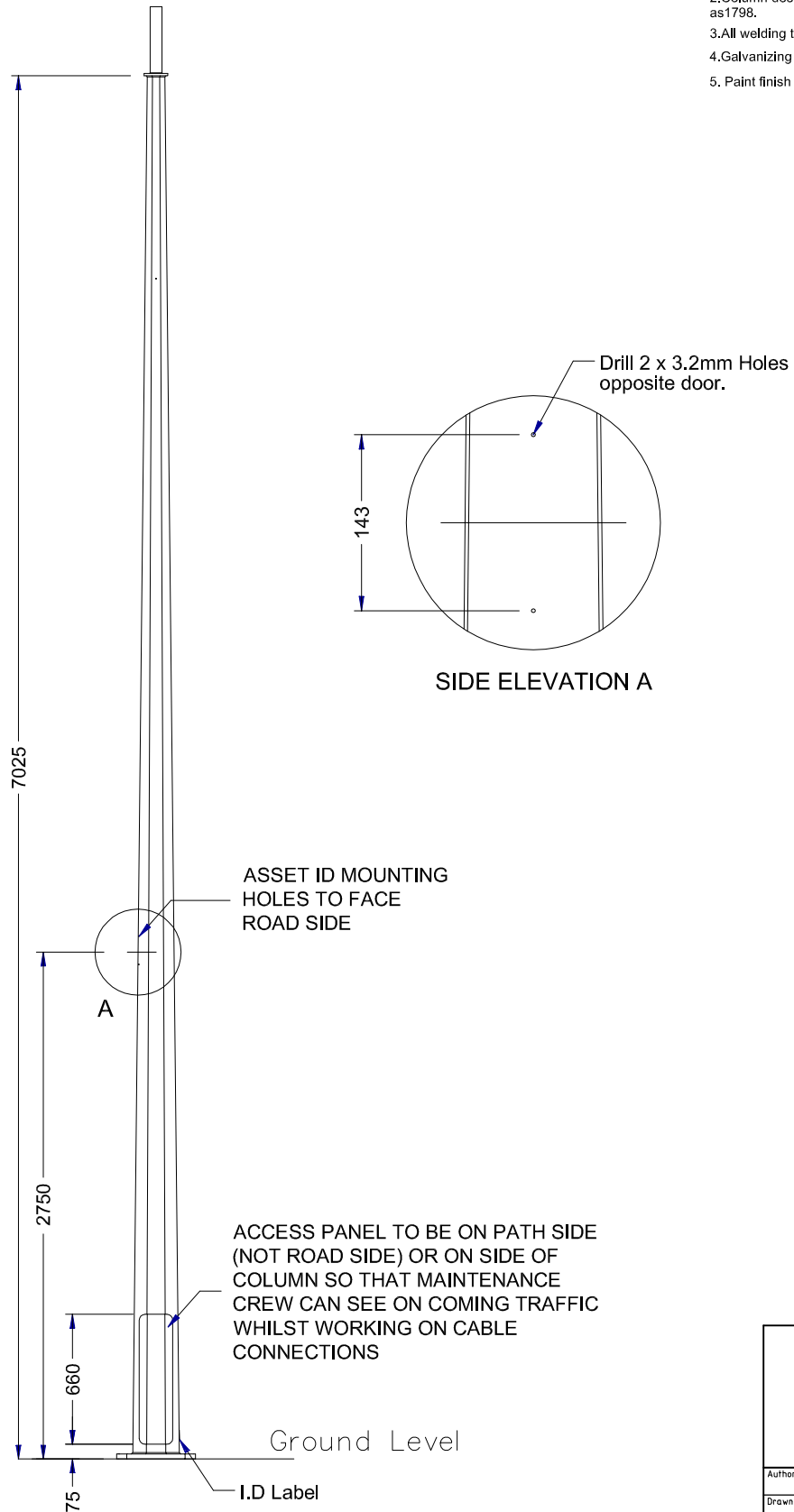
12 Street lighting Drawings

Page 12-48 D of 12-81 D

Edition 1 Revision 1 October 2007

**Notes**

1. All dimensions shown are in mm.
2. Column design to comply with AS 1170 & as 1798.
3. All welding to comply with AS 1554.
4. Galvanizing to conform to AS/NZS 4680.
5. Paint finish to AS 3887 category long term.

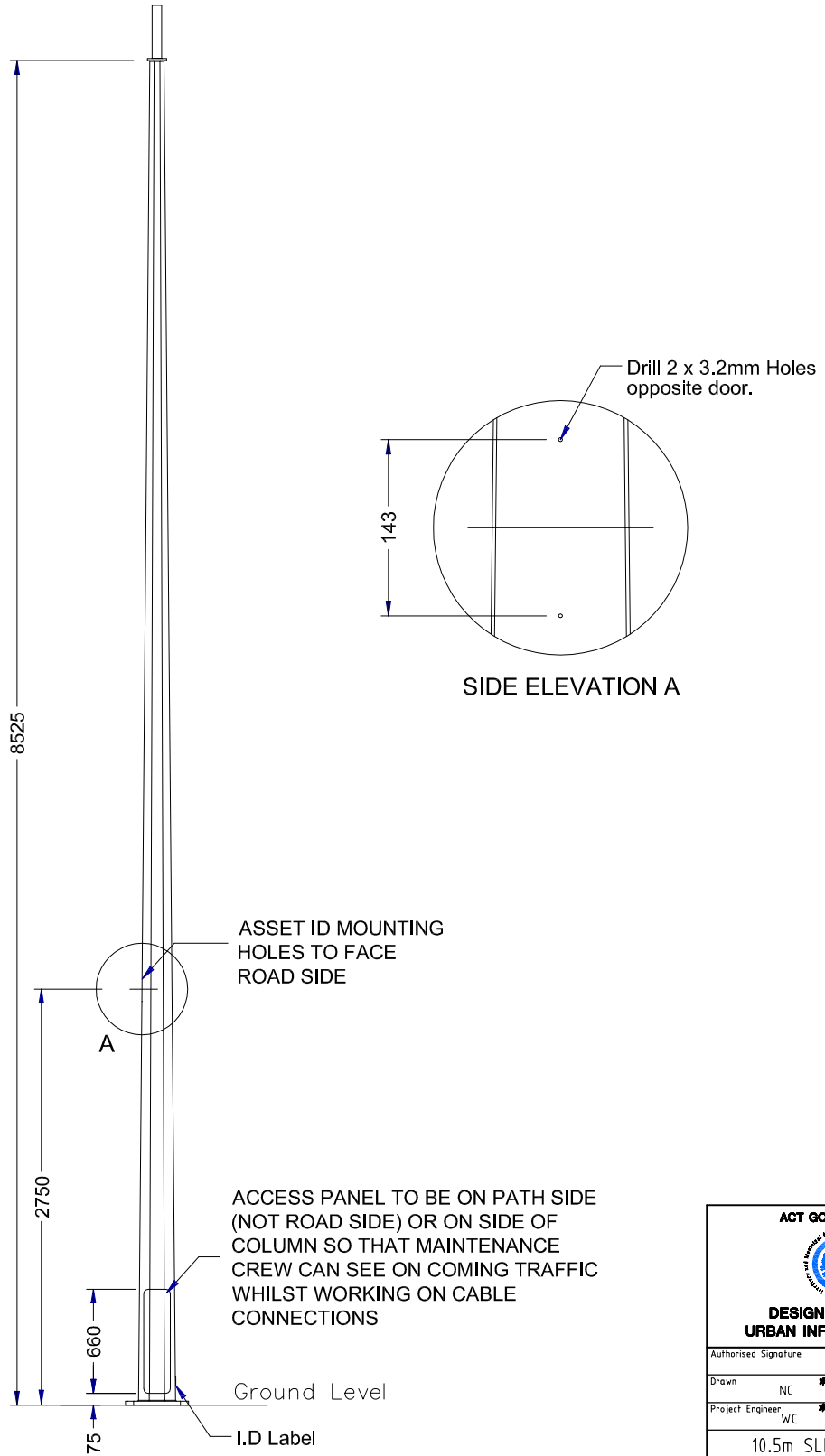



 <b>ACT GOVERNMENT</b> <b>DESIGN STANDARD</b> <b>URBAN INFRASTRUCTURE</b>	
Authorised Signature	
Drawn	NC * Date
Project Engineer	WC * Date
9.0m SLIP BASE	
Scale	Date
NOT TO SCALE	07/08/07
AutoCAD File	
Drawing No.	Revision No.
DS12-03-12	0

\* THIS DRAWING HAS BEEN REPRODUCED BY THE ACT GOVERNMENT WITH PERMISSION FROM VICPOLE.  
 THIS DRAWING HAS BEEN REPRODUCED USING INFORMATION FROM VICPOLE DRAWING VPACT0905B.pwd - DATED 18/01/06

**Notes**

1. All dimensions shown are in mm.
2. Column design to comply with AS 1170 & as1798.
3. All welding to comply with AS 1554.
4. Galvanizing to conform to AS/NZS 4680.
5. Paint finish to AS 3887 category long term.

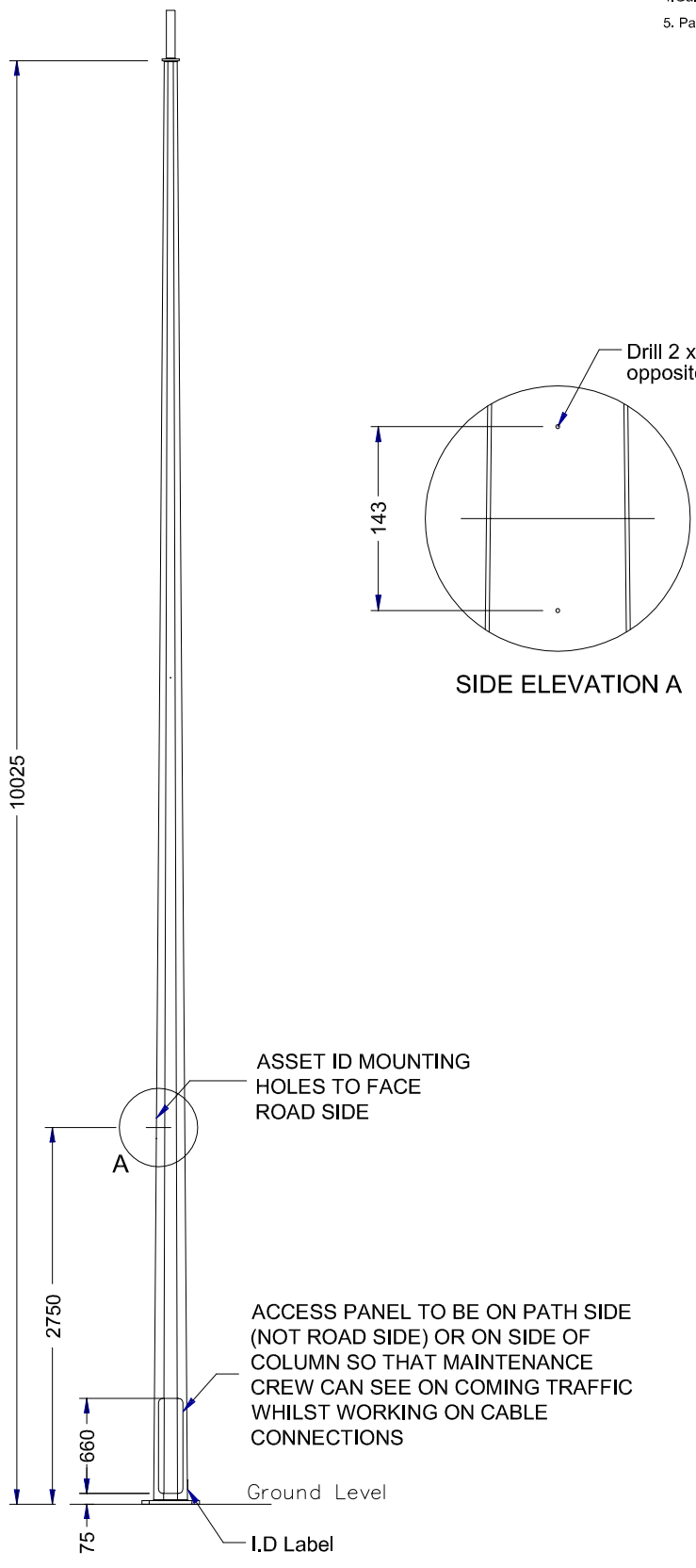


 <b>ACT GOVERNMENT</b> <b>DESIGN STANDARD</b> <b>URBAN INFRASTRUCTURE</b>	
Authorised Signature	
Drawn	NC *      Date
Project Engineer	WC *      Date
10.5m SLIP BASE	
Scale	Date
NOT TO SCALE	07/08/07
AutoCAD File	
Drawing No.	Revision No.
DS12-03-13	0


\* THIS DRAWING HAS BEEN REPRODUCED BY THE ACT GOVERNMENT WITH PERMISSION FROM VICPOLE.  
 THIS DRAWING HAS BEEN REPRODUCED USING INFORMATION FROM VICPOLE DRAWING VPACT105SB.pwd - DATED 18/01/06

**Notes**

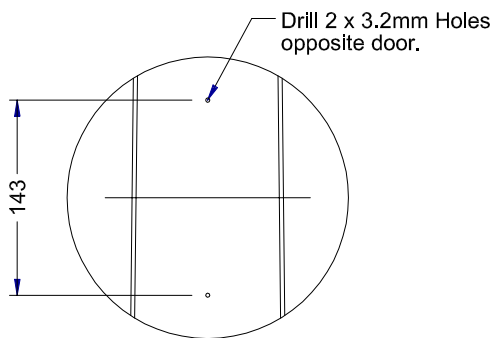
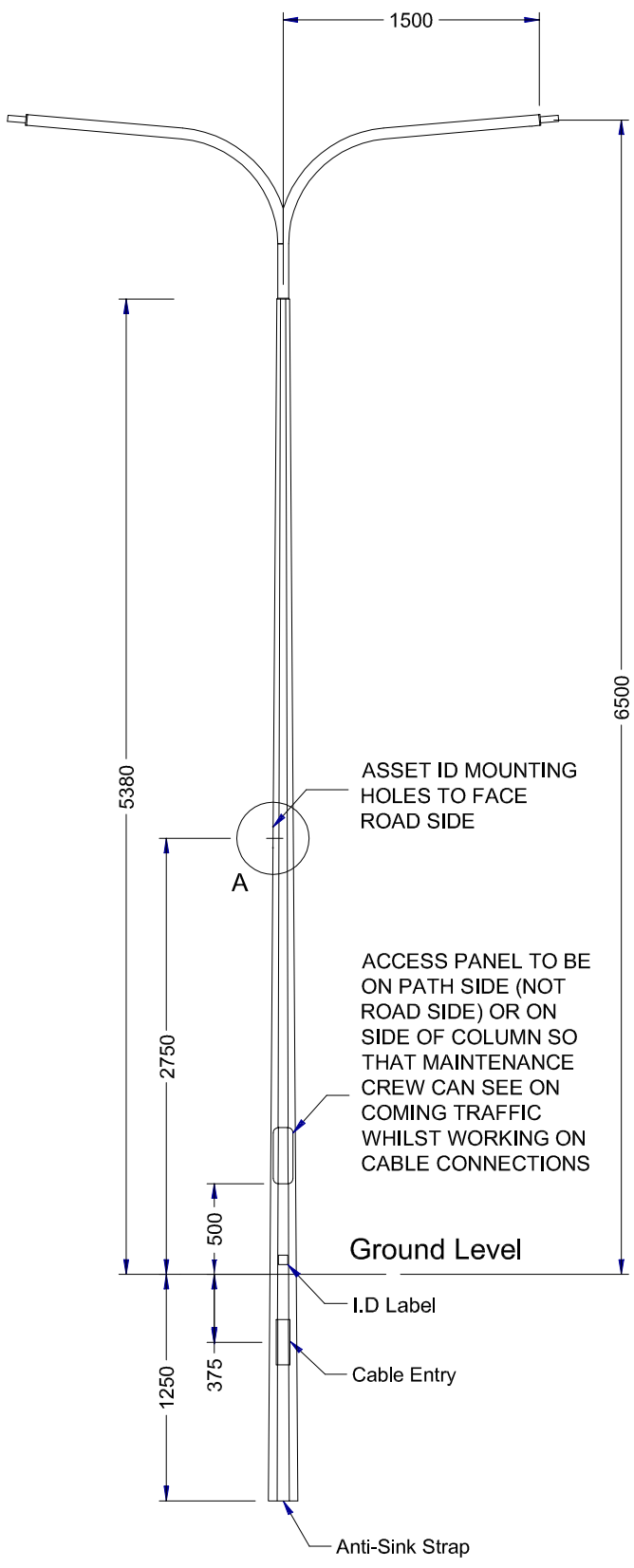
1. All dimensions shown are in mm.
2. Column design to comply with AS 1170 & as1798.
3. All welding to comply with AS 1554.
4. Galvanizing to conform to AS/NZS 4680.
5. Paint finish to AS 3887 category long term.




\* THIS DRAWING HAS BEEN REPRODUCED BY THE ACT GOVERNMENT WITH PERMISSION FROM VICPOLE.  
 THIS DRAWING HAS BEEN REPRODUCED USING INFORMATION FROM VICPOLE DRAWING VPACT120SB.pwd - DATED 18/01/06

 <b>DESIGN STANDARD                  URBAN INFRASTRUCTURE</b>	
Authorised Signature	
Drawn	NC *      Date
Project Engineer	WC *      Date
12m SLIP BASE	
Scale	Date
NOT TO SCALE	07/08/07
AutoCAD File	
Drawing No.	Revision No.
DS12-03-14	0

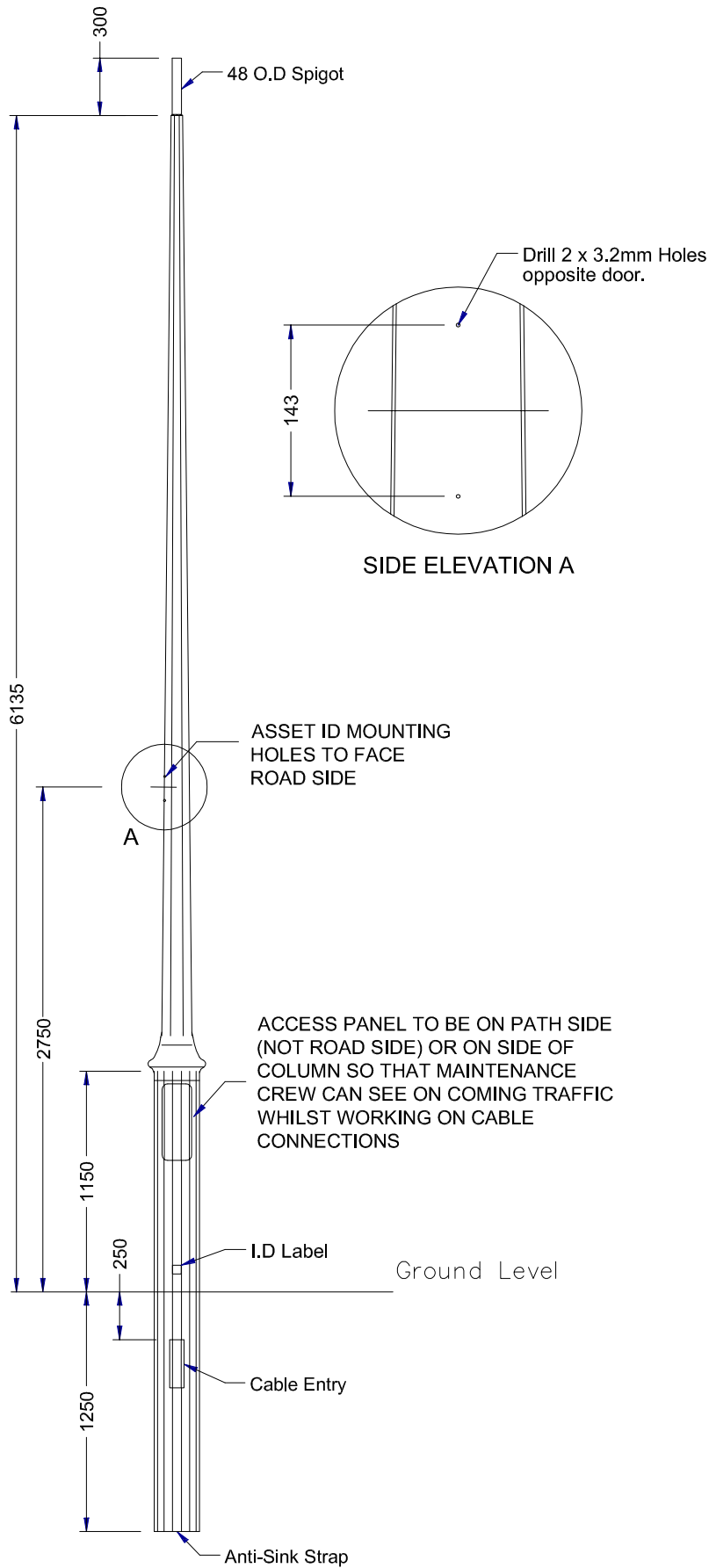
- Notes**
1. All dimensions shown are in mm.
  2. Column design to comply with AS 1170 & AS 1798.
  3. All welding to comply with AS 1554.
  4. Galvanizing to conform to AS/NZS 4680.
  5. Paint finish to AS 3887 category long term.



SIDE ELEVATION A

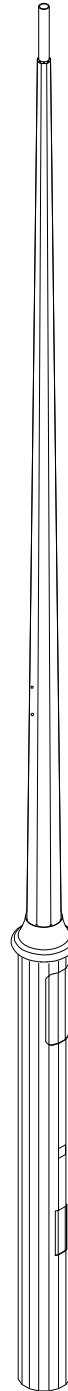
 <b>ACT GOVERNMENT</b> <b>DESIGN STANDARD</b> <b>URBAN INFRASTRUCTURE</b>	
Authorised Signature	
Drawn	NC *      Date
Project Engineer	WC *      Date
<b>6.5m DUAL STREETLIGHT COLUMN</b>	
Scale	Date
NOT TO SCALE	07/08/07
AutoCAD File	
Drawing No.	Revision No.
DS12-03-15	0

\* THIS DRAWING HAS BEEN REPRODUCED BY THE ACT GOVERNMENT WITH PERMISSION FROM VICPOLE.  
 THIS DRAWING HAS BEEN REPRODUCED USING INFORMATION FROM VICPOLE DRAWING VPCW0255ACT DBL.pwd - DATED 15/09/05




**Notes**

1. All dimensions shown are in mm.
2. Column design to comply with AS 1170 & as 1798.
3. All welding to comply with AS 1554.
4. Galvanizing to conform to AS/NZS 4680.
5. Paint finish to AS 3887 category long term.



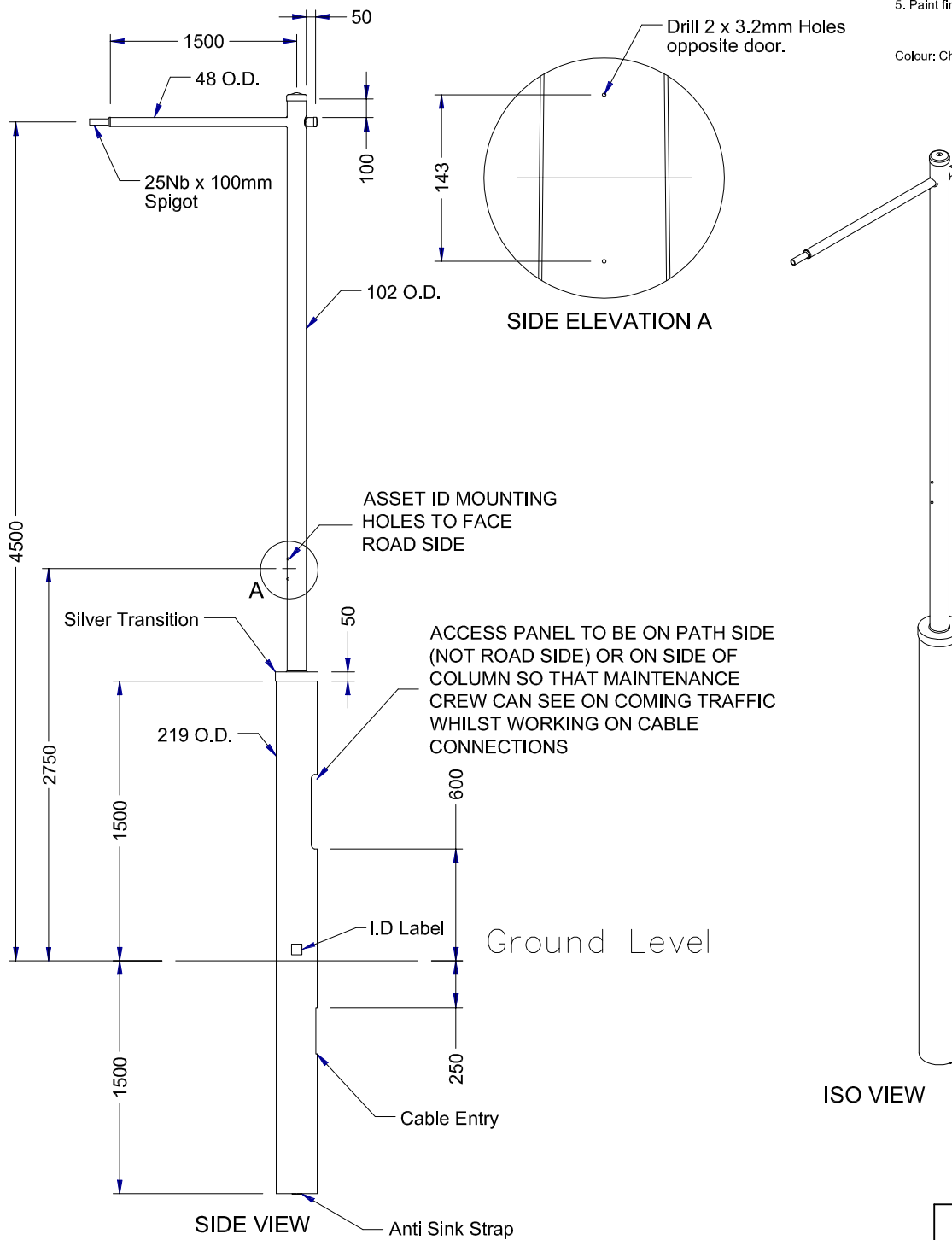
\* THIS DRAWING HAS BEEN REPRODUCED BY THE ACT GOVERNMENT WITH PERMISSION FROM VICPOLE.  
 THIS DRAWING HAS BEEN REPRODUCED USING INFORMATION FROM VICPOLE DRAWING VPACT6.5-PTG.pwd - DATED 18/01/06

 <b>ACT GOVERNMENT</b> <b>DESIGN STANDARD</b> <b>URBAN INFRASTRUCTURE</b>	
Authorised Signature	
Drawn	NC *      Date
Project Engineer	WC *      Date
<b>6.5m DECORATIVE</b> <b>STREETLIGHT COLUMN</b>	
Scale	Date
NOT TO SCALE	07/08/07
AutoCAD File	
Drawing No.	Revision No.
DS12-03-16	0


**Notes**

1. All dimensions shown are in mm.
2. Column design to comply with AS 1170 & AS1798.
3. All welding to comply with AS 1554.
4. Galvanizing to conform to AS/NZS 4680.
5. Paint finish to AS 3887 category long term.

Colour: Charcoal Grey 32999 c/w Silver Trans



ISO VIEW

 <b>ACT GOVERNMENT</b> <b>DESIGN STANDARD</b> <b>URBAN INFRASTRUCTURE</b>	
Authorised Signature	
Drawn	NC * Date
Project Engineer	WC * Date
<b>4.5m FORDE TYPE 1</b> <b>IN GROUND MOUNTED</b> <b>DECORATIVE</b> <b>STREETLIGHT COLUMN</b>	
Scale	Date
NOT TO SCALE	07/08/07
AutoCAD File	
Drawing No.	Revision No.
DS12-03-17	0

\* THIS DRAWING HAS BEEN REPRODUCED BY THE ACT GOVERNMENT WITH PERMISSION FROM VICPOLE.  
 THIS DRAWING HAS BEEN REPRODUCED USING INFORMATION FROM VICPOLE DRAWING 4.5m Forde Type 1 IGM - DATED 20/07/06