

NOTES:

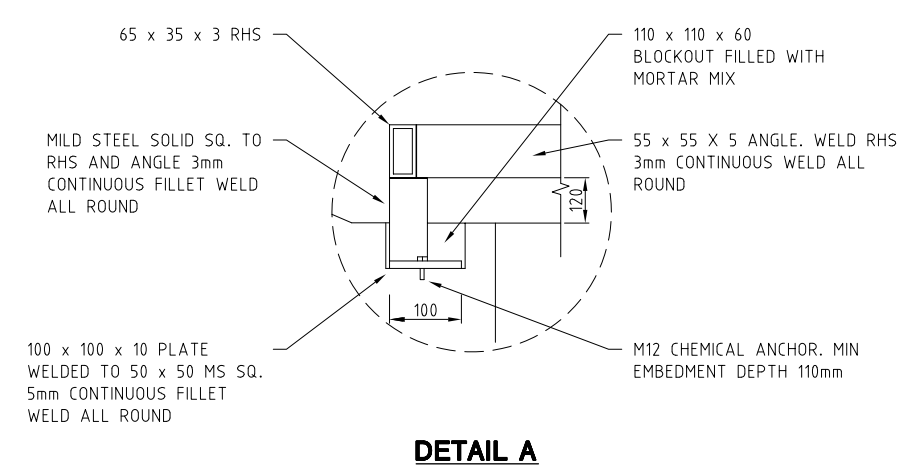
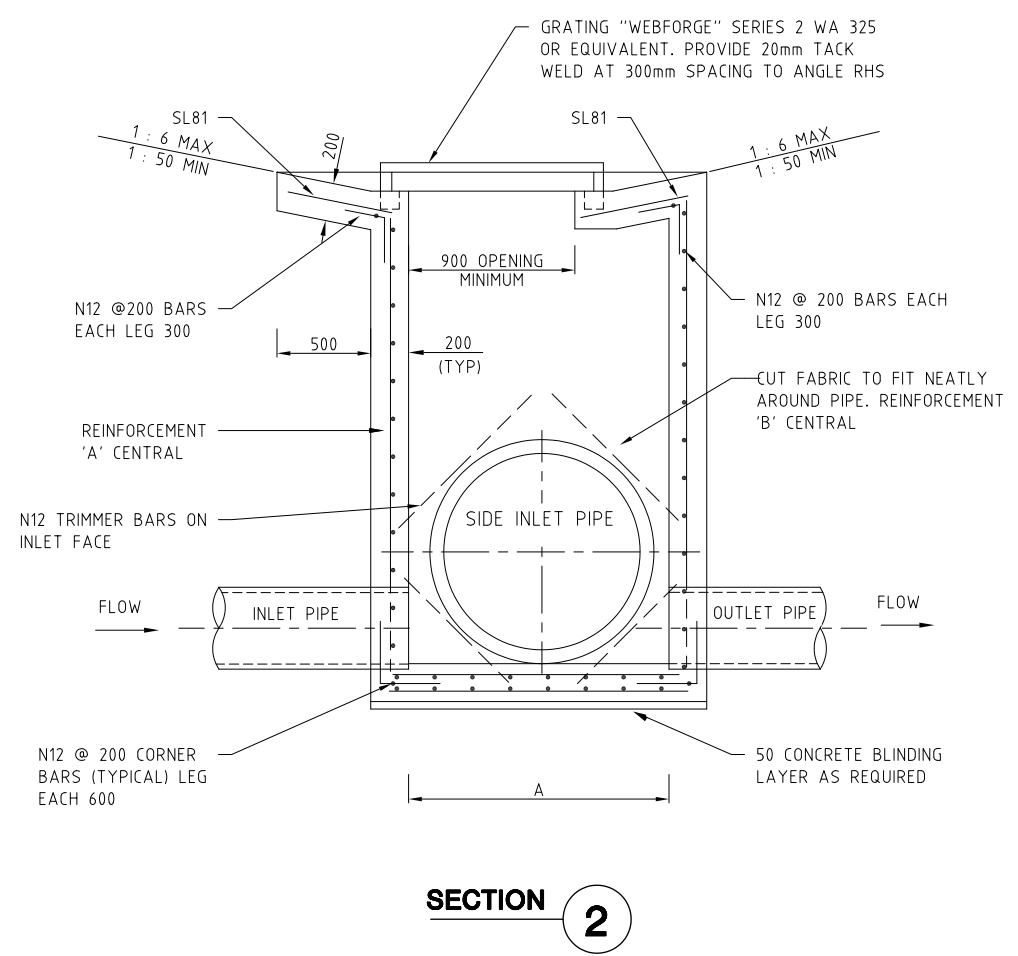
1. REFER TO DRAWING ACTSD-0000 FOR GENERAL NOTES.
2. MINIMUM CONCRETE COMPRESSIVE STRENGTH SHALL BE 32 MPa.
3. GRADE D500N DEFORMED BARS TO AS/NZS 4671 MAY BE USED IN PLACE OF MESH PROVIDING STEEL AREAS ARE MATCHED AND SPLICES ARE PROVIDED IN ACCORDANCE WITH AS 3600.
4. MINIMUM COVER TO REINFORCEMENT 45mm UNO.
5. WHERE A CHANGE IN PIPE DIAMETER THROUGH THE MANHOLE IS INDICATED, REINFORCEMENT AND DIMENSIONS SHALL COMPLY WITH THAT FOR THE LARGER DIAMETER.
6. ALL EXPOSED STEEL WORK TO BE HOT DIPPED GALVANISED AFTER FABRICATION.
7. ALL DIMENSIONS IN mm UNO.

TABLE 1 : STEEL REINFORCEMENT SCHEDULE

REINFORCEMENT TYPE	REINFORCEMENT A&B	REINFORCEMENT C&D
PIPE N.D. 750 - 900	SL81	SL82
1050 - 1200	SL81	SL81

TABLE 2 : LARGEST PIPE O.D. VS. CHAMBER WIDTH

LARGEST PIPE O.D.	CHAMBER WIDTH DIMENSION 'A'
450	900
525	975
600	1050
675	1125
750	1200
825	1275
900	1350
1050	1500
1200	1650



ACT
Government

STANDARD DRAWING

SURCHARGE STRUCTURES

NOT TO SCALE

Authorised:

Latest Revision Details		
Rev	Amendment	Date
0	BASED ON DRG ST-0016	14/01/19
Drawing No. ACTSD-0829		Revision 0