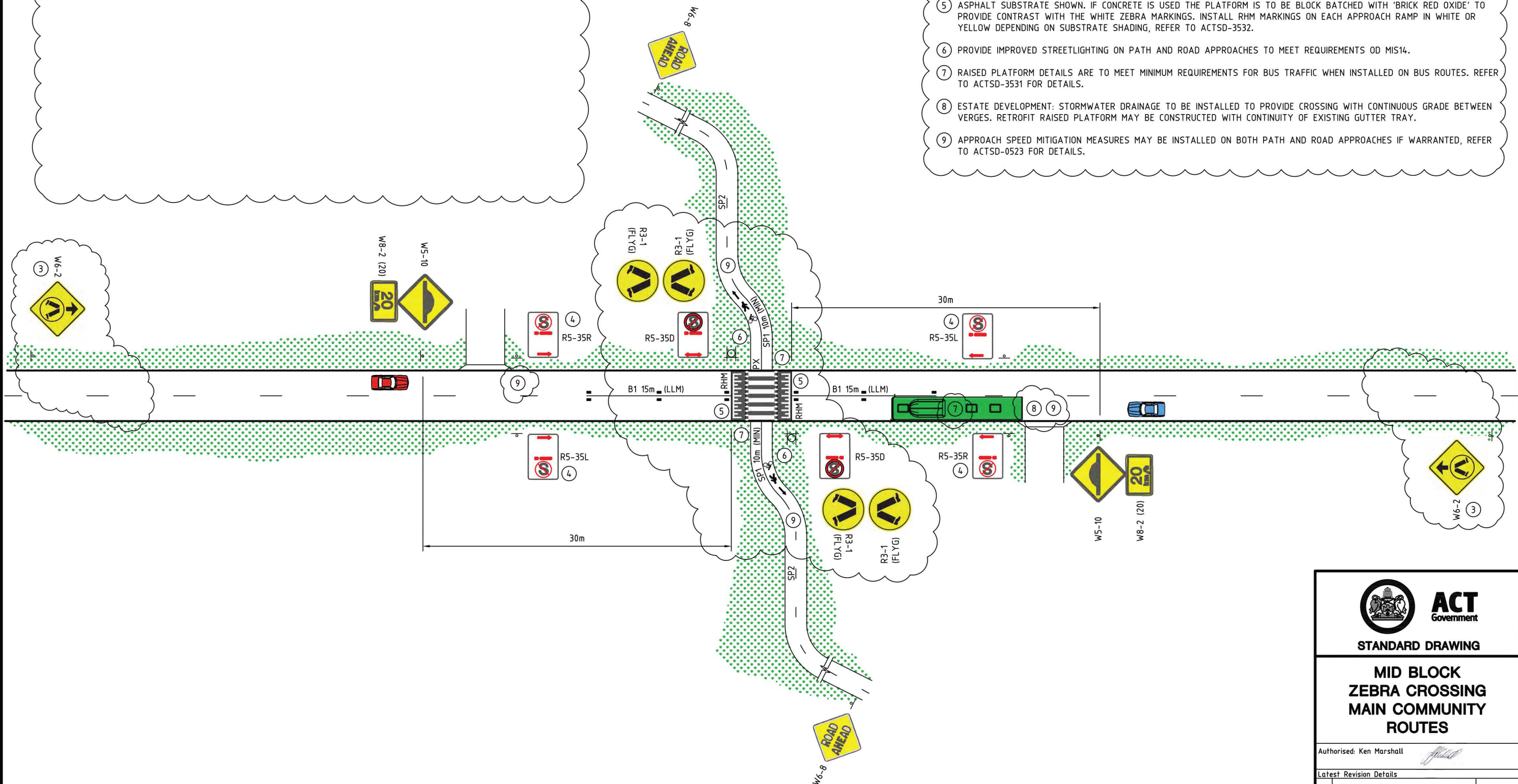


NOTES

- 1 ZEBRA CROSSINGS TO BE IN ACCORDANCE WITH MIS05 4.7.3. FOR USE ON PRINCIPAL, MAIN AND LOCAL COMMUNITY ROUTES.
- 2 WHERE PRACTICABLE AND WHERE VISIBILITY PERMITS SIGNS SHALL BE ERECTED ON LIGHT COLUMNS OR EXISTING POSTS AND ERECT SIGNS.
- 3 WARRANT AND LOCATIONS OF ADVANCED CROSSING WARNING SIGNS TO BE IN ACCORDANCE WITH AS1742.10.
- 4 NO STOPPING SIGNS ARE TO BE PLACED TO PROVIDE THE VISIBILITY SPLAYS DETERMINED FROM VEHICLE AND PATH APPROACH SPEEDS AND SIGHTLINES AT THE CROSSING LOCATION IN ACCORDANCE WITH ACTSD-0522.
- 5 ASPHALT SUBSTRATE SHOWN. IF CONCRETE IS USED THE PLATFORM IS TO BE BLOCK BATCHED WITH 'BRICK RED OXIDE' TO PROVIDE CONTRAST WITH THE WHITE ZEBRA MARKINGS. INSTALL RHM MARKINGS ON EACH APPROACH RAMP IN WHITE OR YELLOW DEPENDING ON SUBSTRATE SHADING, REFER TO ACTSD-3532.
- 6 PROVIDE IMPROVED STREETLIGHTING ON PATH AND ROAD APPROACHES TO MEET REQUIREMENTS OD MIS14.
- 7 RAISED PLATFORM DETAILS ARE TO MEET MINIMUM REQUIREMENTS FOR BUS TRAFFIC WHEN INSTALLED ON BUS ROUTES. REFER TO ACTSD-3531 FOR DETAILS.
- 8 ESTATE DEVELOPMENT: STORMWATER DRAINAGE TO BE INSTALLED TO PROVIDE CROSSING WITH CONTINUOUS GRADE BETWEEN VERGES. RETROFIT RAISED PLATFORM MAY BE CONSTRUCTED WITH CONTINUITY OF EXISTING GUTTER TRAY.
- 9 APPROACH SPEED MITIGATION MEASURES MAY BE INSTALLED ON BOTH PATH AND ROAD APPROACHES IF WARRANTED, REFER TO ACTSD-0523 FOR DETAILS.



MID BLOCK ZEBRA CROSSING

NOT TO SCALE

FOR USE ON MAIN COMMUNITY ROUTES

SUBURBAN OR INNER-URBAN LAND USE - ESTATE DEVELOPMENT OR RETROFIT



STANDARD DRAWING

MID BLOCK ZEBRA CROSSING MAIN COMMUNITY ROUTES

Authorised: Ken Marshall

Latest Revision Details

Rev	Amendment	Date
2	PATH PRIORITY CROSSING DELETED AND REPLACED WITH ZEBRA CROSSING	22/12/21
1	APPROACH WARNING SIGNS AND NOTE 1 AMENDED	09/11/20
0	FIRST ISSUE	28/09/18

Drawing No. ACTSD-0521 Revision 2