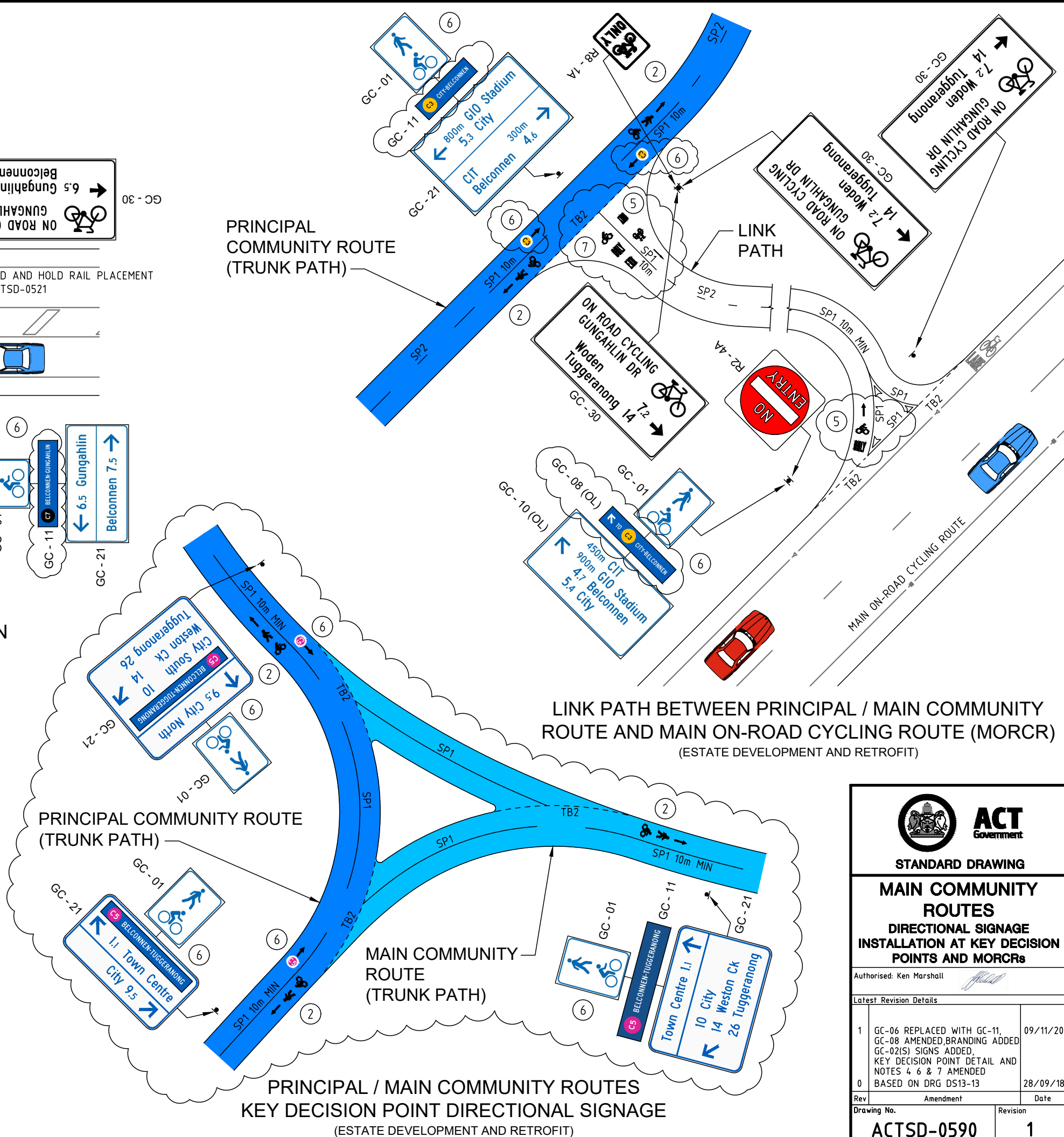


**PRINCIPAL / MAIN COMMUNITY ROUTE INTERSECTION
WITH MAIN ON ROAD CYCLING ROUTE (MORCR)**
(ESTATE DEVELOPMENT AND RETROFIT)

NOTES

- 1 THIS DRAWING IS TO BE READ IN CONJUNCTION WITH MIS05 4.10.
- 2 PAVEMENT SYMBOL ASSEMBLY TO BE POSITIONED AWAY FROM ANY VERGE PATH. FOR LAYOUT DETAILS REFER TO ACTSD-3522.
- 3 SHARE THE PATH SIGN TO BE POSITIONED APPROXIMATELY 10m FROM ROAD CROSSING AND EVERY 500m - 750m ALONG MAIN COMMUNITY ROUTES OR WHERE THERE IS LIKELY TO BE A HIGHER VOLUME OF ENTERING WALKERS AND CYCLISTS.
- 4 DIRECTIONAL SIGNAGE IN ESTATE DEVELOPMENT IS NOT TO BE INSTALLED UNTIL SUITABLE FACILITIES LINK TO ALL DESTINATIONS SHOWN ON SIGNS. REFER TO MIS05 4.10.10 FOR GUIDANCE DETAILS.
- 5 USE BICYCLE ONLY LINK PATH PAVEMENT MARKINGS TO REINFORCE ENTRY/EXIT ONLY TO/FROM ON-ROAD CYCLING FACILITY.
- 6 PRINCIPAL COMMUNITY ROUTE LABEL SIGNS AND PLATES ON DESTINATION SIGNS ARE ONLY TO BE USED ON PRINCIPAL COMMUNITY ROUTES. PRINCIPAL COMMUNITY ROUTE BRANDING AND LABELS ARE AS SHOWN ON ACTSD-0575. REFER TO ACTSD-0576 AND -0577 FOR DETAILS ON DESTINATION SIGN LAYOUT AND DESTINATION SIGN EXAMPLES WITH PCR LABEL PLATES.
- 7 TB2 OR TB3 LINES AND ASSOCIATED GIVE WAY SIGNAGE SHALL BE USED AT RETROFIT 4-WAY INTERSECTIONS OR WHERE PRIORITY OR SIGHT DISTANCE IS AN ISSUE.
- 8 ONLY ENDORSED FOCAL POINT NAMES ARE TO BE INCLUDED AS DESTINATIONS ON DIRECTIONAL SIGNAGE. REFER TO THE ATIPT FOR THE LIST OF ENDORSED FOCAL POINTS INCLUDING POSITION AND ANY ABBREVIATIONS.

**PRINCIPAL
COMMUNITY ROUTE
(TRUNK PATH)**



ACT Government

STANDARD DRAWING

MAIN COMMUNITY ROUTES

**DIRECTIONAL SIGNAGE
INSTALLATION AT KEY DECISION
POINTS AND MORCRs**

Authorised: Ken Marshall

Latest Revision Details

1	GC-06 REPLACED WITH GC-11, GC-08 AMENDED, BRANDING ADDED, GC-02(S) SIGNS ADDED, KEY DECISION POINT DETAIL AND NOTES 4, 6 & 7 AMENDED	09/11/20
0	BASED ON DRG DS13-13	28/09/18

Rev Amendment Date

Drawing No. ACTSD-0590 Revision 1