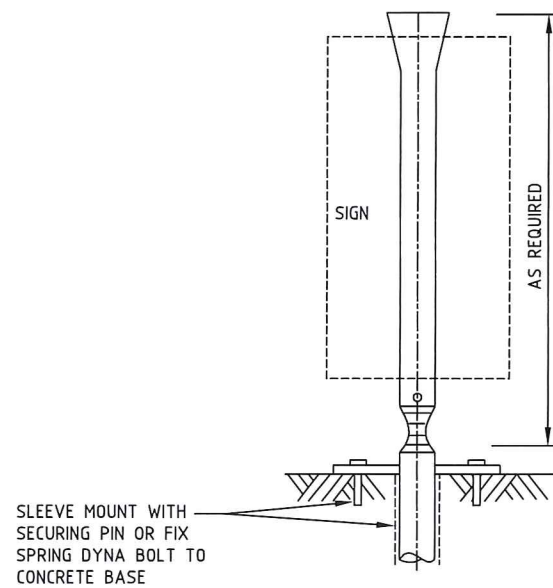
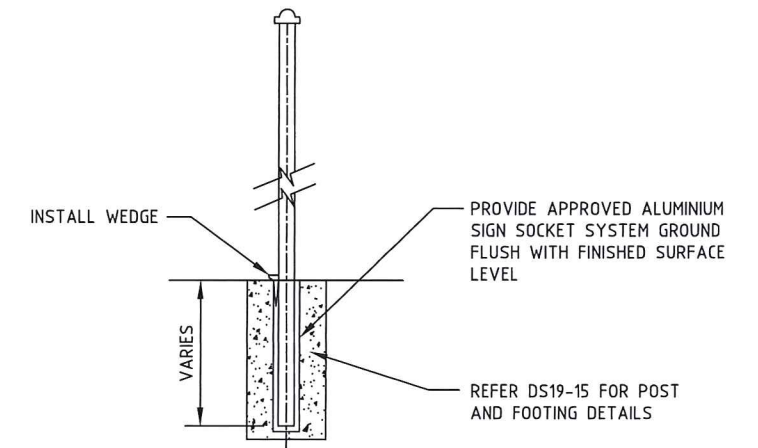


THREADED POST AND FOOTING DETAIL

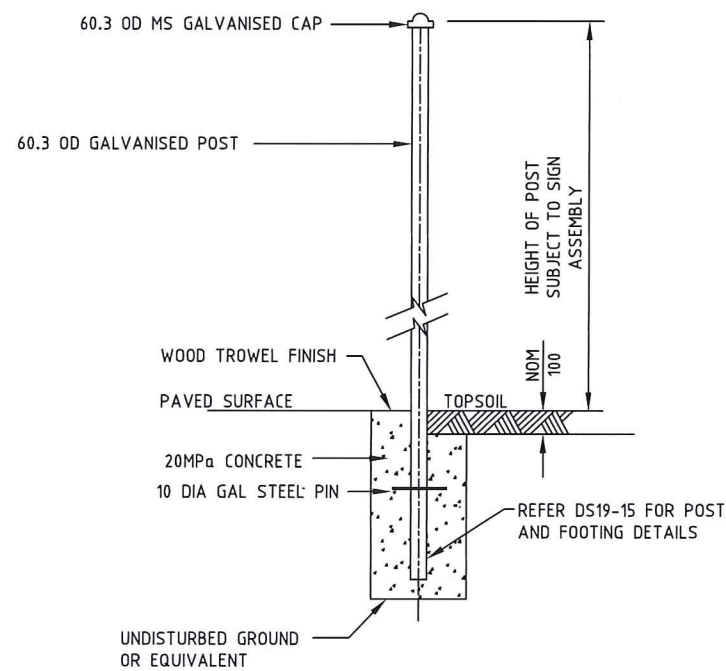
RESTRICTED USE - REFER ROAD SIGN SPECIFICATION



IMPACT RECOVERY SYSTEM LOW MAINTENANCE FOOTING SYSTEMS

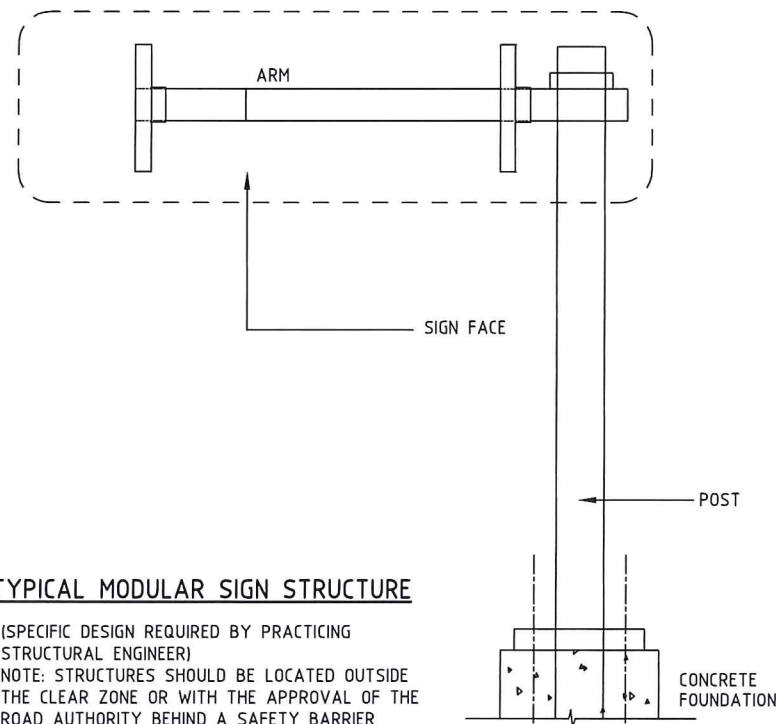


ALUMINIUM GROUND SOCKET SYSTEM



DIRECT BURIED POST AND FOOTING DETAIL FOR SMALL SIGN ASSEMBLIES

(REFER DS9-15 FOR POST AND FOOTING SIZES)





TYPICAL MODULAR SIGN STRUCTURE

(SPECIFIC DESIGN REQUIRED BY PRACTICING STRUCTURAL ENGINEER)
NOTE: STRUCTURES SHOULD BE LOCATED OUTSIDE THE CLEAR ZONE OR WITH THE APPROVAL OF THE ROAD AUTHORITY BEHIND A SAFETY BARRIER

FRANGIBLE POSTS:

LARGE POSTS THAT ARE NOT CONSIDERED FRANGIBLE SHALL BE LOCATED 1m MINIMUM BEHIND SAFETY BARRIERS OR OUTSIDE OF THE CLEAR ZONE (MAX LATERAL SIGN OFFSET APPLICABLE). WHERE THESE PROVISIONS CANNOT BE MET FRANGIBLE POSTS SHALL BE USED. REFER DS9-15 FOR POSTS CONSIDERED FRANGIBLE.

NOTE
ALL DIMENSIONS SHOWN ARE IN mm
UNLESS SHOWN OTHERWISE

  <p>ACT GOVERNMENT</p>	
<p>DESIGN STANDARD URBAN INFRASTRUCTURE</p>	
<p>Authorised: DIRECTOR, ROADS ACT TONY GILL</p>	
Drawn:	Date
MARTIN GORDON	23/06/2011
Project Engineer:	Date
FRED IHEGIE / SNEZANA DIMITROVSKA	23/06/2011
<p>ENDORSED SIGN SYSTEM</p>	
Scale	Date
NTS	23 JUNE 2011
<p>AutoCAD File DS9-12.DWG</p>	
<p>Latest Revision Details A DS9 UPDATE</p>	
Drawing No.	Revision
DS9-12	A