

Multi-use path ahead warning assembly consisting of:
 W6-ACT-24 Warning Plate "Reduce Speed" - Path Use,
 W6-ACT-01 Multi-use path/trail sign and
 W6-ACT-26 Warning Plate "Ahead" - Path Use

Place sign assembly
 50-80m in advance of start
 of multi-use path

Use white pavement markings
 on dark surfaced paths.
 Use yellow markings on light
 coloured paths.

G8-ACT-01-S
 Equestrian
 Trail Marker

Equestrian trail

Trunk path

Equestrians AHEAD
 elongated path marking
 (2.75m H x 1.0m W)
 located adjacent to
 warning signs

W6-ACT-01
 Multi-Use
 Path/Trail
 Sign

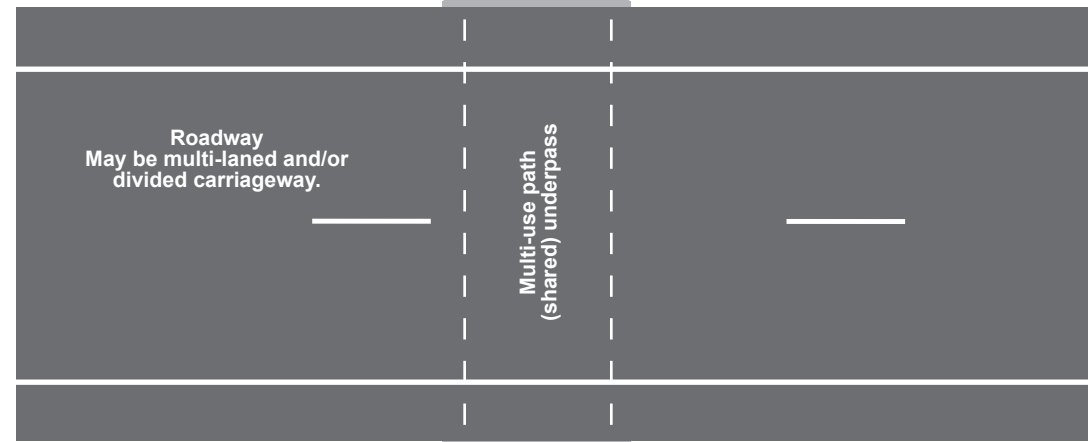
Multi-use path warning
 assembly consisting of:
 W6-ACT-01 Multi-use
 path/trail sign and
 W6-ACT-26 Warning
 Plate "Ahead" - Path
 Use

Place sign
 assembly
 20-40m in
 advance of start
 of multi-use
 path

W6-ACT-02-R
 Signs used in
 conjunction with
 W6-ACT-21 Turn
 Arrow Indicators

Shared underpass warning
 assembly consisting of:
 W6-ACT-01 Multi-use
 path/trail sign and
 W6-ACT-27 Underpass
 Warning Sign (Equestrians)

Culvert
 headwall



Culvert
 headwall

Shared underpass warning
 assembly consisting of:
 W6-ACT-01 Multi-use
 path/trail sign and
 W6-ACT-27 Underpass
 Warning Sign (Equestrians)

W6-ACT-02-R
 Signs used in
 conjunction with
 W6-ACT-21 Turn
 Arrow Indicators

Multi-use path ahead warning
 assembly consisting of:
 W6-ACT-24 Warning Plate
 "Reduce Speed" - Path Use,
 W6-ACT-01 Multi-use
 path/trail sign and
 W6-ACT-26 Warning Plate
 "Ahead" - Path Use

Equestrians AHEAD
 elongated path marking
 (2.75m H x 1.0m W)
 located adjacent to
 warning signs

Use white
 pavement
 markings on
 dark surfaced
 paths.
 Use yellow
 markings on
 light coloured
 paths.

Place sign
 assembly
 50-80m in
 advance of start
 of multi-use
 path

Equestrian trail

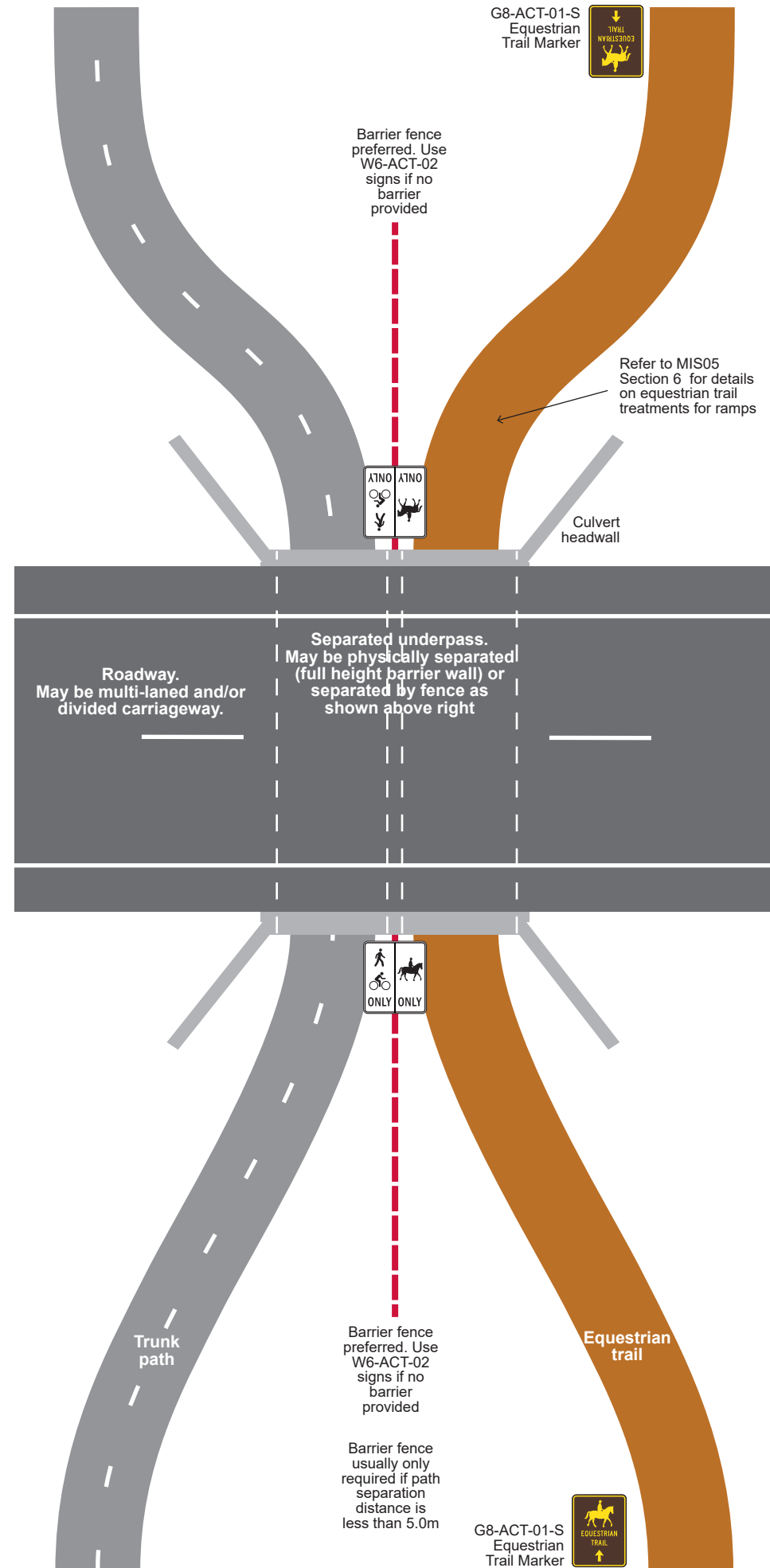
Multi-use path warning
 assembly consisting of:
 W6-ACT-01 Multi-use
 path/trail sign and
 W6-ACT-26 Warning Plate
 "Ahead" - Path Use

G8-ACT-01-S
 Equestrian
 Trail Marker

W6-ACT-01
 Multi-Use
 Path/Trail
 Sign

Trunk path

**Grade separated road crossing (shared underpass) - Retrofit only
 Layout and Signage**



Barrier fence
 preferred. Use
 W6-ACT-02
 signs if no
 barrier
 provided

G8-ACT-01-S
 Equestrian
 Trail Marker

↓
 TRAIL
 MARKER

Refer to MIS05
 Section 6 for details
 on equestrian trail
 treatments for ramps

Culvert
 headwall

Separated underpass.
 May be physically separated
 (full height barrier wall) or
 separated by fence as
 shown above right

Roadway.
 May be multi-laned and/or
 divided carriageway.

ONLY ONLY

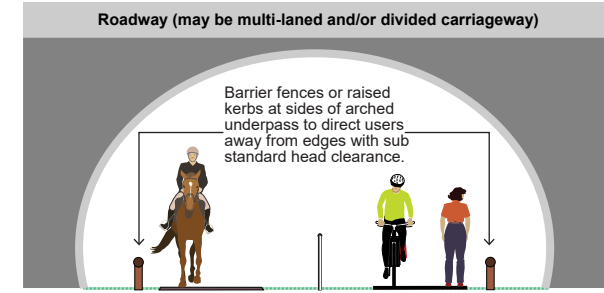
Barrier fence
 preferred. Use
 W6-ACT-02
 signs if no
 barrier
 provided

Barrier fence
 usually only
 required if path
 separation
 distance is
 less than 5.0m

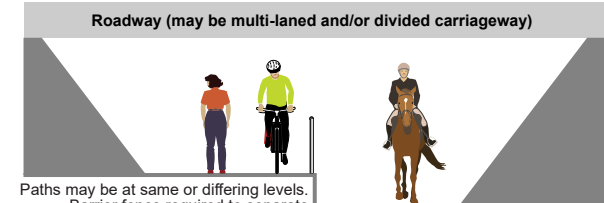
G8-ACT-01-S
 Equestrian
 Trail Marker

↓
 TRAIL
 MARKER

**Grade separated road crossing (separated underpass) - Estate Development
 Layout and Signage**




Separated underpass (arch type) - elevation view



Separated underpass (slab type) - elevation view

NOTES

- 1 Refer to ACTSD-0610 for layout details on grade separated crossings shared with a roadway.
- 2 Path widths are as per MIS05 Table 5.6.
3. Equestrian trail details as per MIS05 Section 6.



ACT
Government

STANDARD DRAWING

**EQUESTRIAN FACILITIES
 GRADE SEPARATED
 CROSSINGS**

Authorised: *[Signature]*

Latest Revision Details:

Rev	Description	Date
0	First issue	28/09/18
1	Amendment	Date

Drawing No: **ACTSD-0611** Revision: **0**