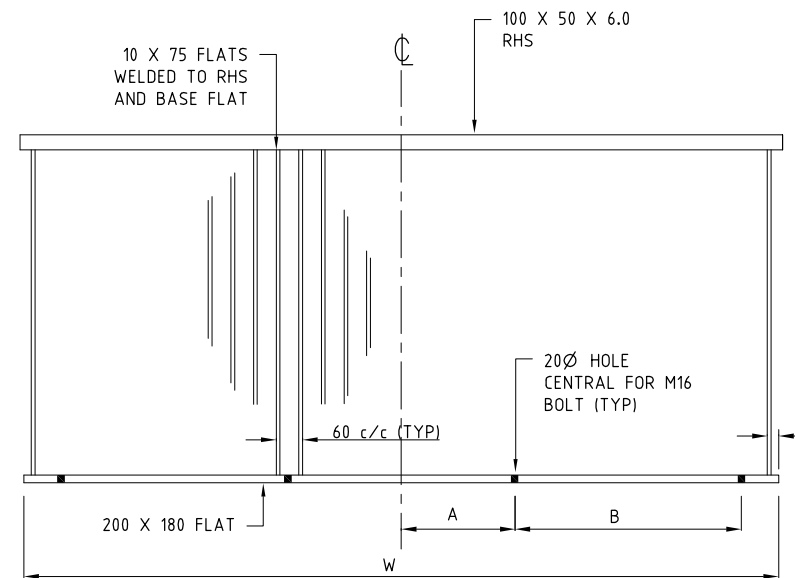


SECTION 1



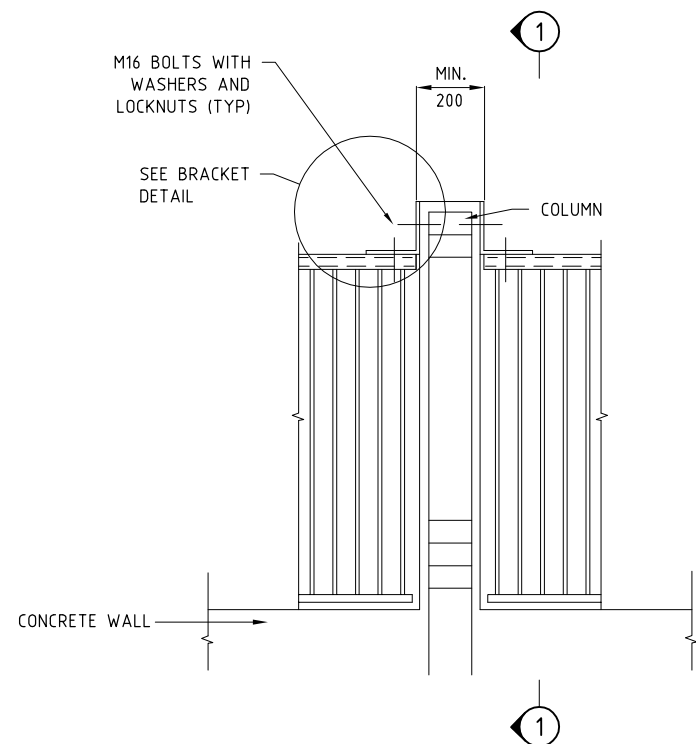
PANEL ELEVATION

TRASH RACK DIMENSIONS SCHEDULE

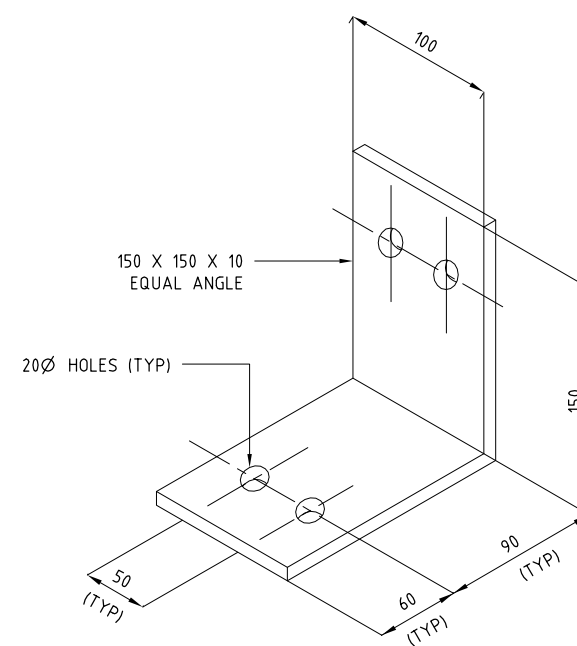
GPT TYPE	W	A	B	C
MINOR	1900	270	540	50
MAJOR	2800	420	840	50
MAJOR	4800	450	900	60

NOTES:

1. ALL METALWORK SHALL BE HOT-DIPPED GALVANISED AFTER FABRICATION IN ACCORDANCE WITH AS1650.
2. ALL WELDS SHALL BE 6MM CONTINUOUS FILLET OR BUTT WELDS IN ACCORDANCE WITH AS1554.
3. 4/N12 BARS IN COLUMN WITH R10 LIGS AT 200 CTS.
4. ALL DIMENSIONS IN MN UNO
5. ANCHORS TO BE CHEMSETS.



CONNECTION DETAIL



BRACKET DETAIL

NOT TO SCALE



GPT TRASH RACKS

Authorised:

Latest Revision Details

- BASED ON DRG ST-0034		--/--/---
Rev	Amendment	Date
Drawing No. ACTSD-0873		Revision -

DRAFT
15/11/23