

LINEMARKING GUIDE									
ACT LINE TYPE	RMS LINE TYPE	CAD CODE	LINE USE	LINE DIMENSION	LINE WIDTH	LINE COLOUR	TYPICAL RRPM SPACING	MATERIAL	
<b>BARRIER LINES</b>									
B1	E4/E5	B1	BARRIER LINE (REFER ACTSD-3506)		150	WHITE	IF & AS SPECIFIED	PAINT	
BS	BS	BS & BSG	CROSSING IS PERMITTED IN ONE DIRECTION		100, 100 GAP, 100	WHITE	* 12000 ** 24000	PAINT	
BB	BB	BB	CROSSING IS NOT PERMITTED		100, 100 GAP, 100	WHITE	* 12000 ** 24000	PAINT	
<b>PARKING LINES (BARRIER LINES)</b>									
P1	-	P1	PARKING BAY BARRIER LINE		80	WHITE	-	PAINT	
P2	-	P2	SPECIAL USE SPACE (RESERVED PARKING LINE, KEEP CLEAR, ACCESSIBLE PARKING SPACES, LOADING ZONES) AND DKE INTERSECTION TREATMENT		80	YELLOW	-	PAINT	
P3	-	P3	SPECIAL USE SPACE (BUS BAYS, LOADING ZONES AND TAXI RANKS) AND DKE INTERSECTION TREATMENT		150	YELLOW	-	LLM	
P4	-	P4	PARKING BAY		80	WHITE	-	PAINT	
P2 & P3	-	P2 & P3	DKE (DYNAMIC KINEMATIC ENVELOPE) INTERSECTION TREATMENT USE AT ROAD/RAIL INTERSECTIONS TO DEMARCAT DKE. P2 ON TRACK SIDE AND P3 ON ROAD SIDE		80, 150 GAP, 100	YELLOW	-	LLM	
<b>CONTINUITY LINES</b>									
C1	C1	C1	MERGE AND DIVERGE SITUATIONS, LONG TAPERS, ACCELERATION & DECELERATION TAPERS		150	WHITE	8000	LLM	
C2	C1	C2	TYPICALLY USED TO THE LEFT OF A C1 LINE AT A CYCLE STAND UP LANE OR WHERE APPROVED BY THE ROAD AUTHORITY TO PROVIDE GUIDANCE THROUGH SIGNALISED INTERSECTION		150	WHITE	-	LLM	
<b>DIVIDING LINES</b>									
S1	S1	S1-24	(i) RURAL ROADS		100	WHITE	* 12000 ** 24000	PAINT	
	S1	S1-12	(ii) ALL OTHER ROADS		100	WHITE	12000	PAINT	
	S1	SLL	(iii) LOCAL ROADS WHERE RRPM DELINEATION IS NOT REQUIRED		100	WHITE	-	PAINT	
S6	-	S6	RURAL ROAD CENTRELINE OR SPECIAL USE AT INTERSECTIONS (ONLY TO BE USED WHERE APPROVED BY THE ROAD AUTHORITY)		150	WHITE	12000	PAINT	
<b>EDGE LINES</b>									
E1	-	E1	EDGE LINE LEFT HAND SIDE		150	WHITE	31000	PAINT	
E3	-	E3	DIVIDED ROAD RIGHT HAND SIDE		150	WHITE	31000	PAINT	
<b>LANE LINES</b>									
L1	L1	L1	RURAL ROADS AND ARTERIALS		100	WHITE	* 12000 ** 24000	PAINT	
L4 (150 WIDE)	L4	L4	EXIT LANE MARKING ON ROUNDABOUT		150	WHITE	IF & AS SPECIFIED	LLM	
L8	L1	L8	ARTERIAL		100	WHITE	* 12000 ** 24000	PAINT	
L9	L1	L9	ARTERIAL SPECIAL CONDITIONS		100	WHITE	12000	LLM	
<b>TRANSVERSE LINES</b>									
T1	T1	T1	TURN LINE		100	WHITE	-	LLM	
TB	TB	TB	GIVE WAY LINE AT CONTROLLED INTERSECTIONS		300	WHITE	-	LLM	
TB1	TB1	TB1	CONTROLLED INTERSECTIONS, SHORT TAPERS		150	WHITE	IF & AS SPECIFIED	LLM	
SL1	-	SL1	STOP LINE AT TRAFFIC SIGNALS AND SCHOOL CROSSINGS		600	WHITE	-	LLM	
TF	TF	TF	STOP LINE AT PRIORITY INTERSECTIONS		300	WHITE	IF & AS SPECIFIED	LLM	
RS	-	RS	RUMBLE STRIP - SPEED REDUCTION MEASURE (ONLY TO BE USED WHERE APPROVED BY THE ROAD AUTHORITY)		600	WHITE	-	LLM	
E6	E6	E6	WHITE GORE		-	WHITE	-	PAINT	
PCW	PCW	PCW	PEDESTRIAN CROSSWALK LINE		150	WHITE	-	LLM	
TBC	TBC	TBC	TRANSVERSE BICYCLE CROSSING		400	WHITE	IF & AS SPECIFIED	LLM	
PX	PX	PX	ZEBRA CROSSING		600	WHITE	IF & AS SPECIFIED	LLM	
RHM	RHM	RHM	ROAD HUMP MARKING		200	WHITE	-	LLM	
<b>PATH LINES</b>									
B2T	-	B2T	BARRIER LINE (TACTILE MARKING)		150	WHITE	-	LLM	
SP1	-	SP1	PATH SEPARATION LINE AND PATH EDGE LINE		80	WHITE	-	PAINT	
SP2	-	SP2	PATH SEPARATION LINE		80	WHITE	-	PAINT	
TB2	-	TB2	CONTROLLED INTERSECTIONS		100	WHITE	-	PAINT	
TB3	-	TB3	GIVE WAY LINE CONTROLLED INTERSECTIONS		200	WHITE	-	PAINT	
SC2	-	SC2	STOP LINE AT PRIORITY INTERSECTIONS		200	WHITE	-	PAINT	

SYMBOLS FOR RETRO-REFLECTIVE RAISED PAVEMENT MARKERS (RRPM)				
MARKER OR TERM	COLOUR	CAD CODE	SYMBOL	APPLICABLE STANDARD
RETRO-REFLECTIVE RAISED PAVEMENT MARKER (RRPM) UNIDIRECTIONAL	WHITE	RPM_WU		AUST STD
	YELLOW	RPM_YU		AUST STD
	RED	RPM_RU		AUST STD
	GREEN	RPM_GU		AUST STD
	GREEN SOLAR	RPM_GU_SOLAR		ACT SPECIFIC
BIDIRECTIONAL	WHITE	RPM_WB		AUST STD
	YELLOW	RPM_YB		AUST STD
	YELLOW	RPM_YBD		AUST STD
	BLUE	RPM_BB		ACT SPECIFIC

**LEGEND:**

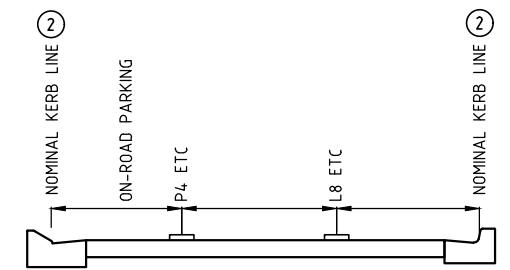
- \* WITH STREET LIGHTS
- \*\* TYPICALLY WITHOUT STREET LIGHTS

**LINEMARKING GUIDE NOTES:**

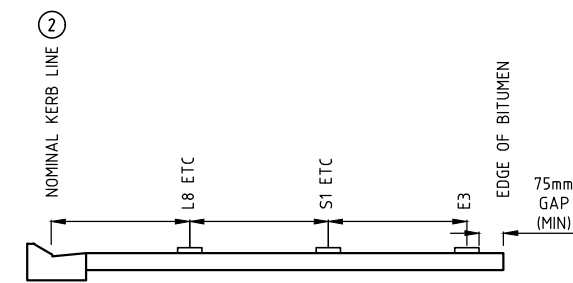
- YELLOW LINEMARKING USED FOR KEEP CLEAR, ACCESSIBLE MARKINGS, TAXI ZONES, LOADING ZONES, SPECIAL USE PARKING SPACES AND 300mm HIGH (LLM) "TAXI ZONE" AND "LOADING ZONE" PAVEMENT TEXT
- ALL UNITS IN mm, UNLESS SHOWN OTHERWISE
- RRPMs NOT TO BE USED ON PATHS UNLESS DETAILED OTHERWISE
- LLM DENOTES LONG LIFE MATERIAL SUCH AS THERMOPLASTIC, COLD APPLIED PLASTIC AND CEMENT BASED PRODUCTS CAPABLE OF HAVING AN APPROVED NON-SLIP MEDIA APPLIED. LLM SHALL BE USED IN HIGH WEAR AREAS AND IN AREAS WHERE CONSPICUITY IS IMPORTANT (EG APPROACH TO REFUGE ISLAND)
- IN AREAS OF INDENTED BUS STOPS AND PARKING THE P3 OR P4 LINEMARKING SHALL BE PLACED ON THE THROUGH LANE SIDE OF THE OCI OR CONCRETE PAVING
- LINEMARKING MATERIAL SHALL BE AS SPECIFIED IN THE ADJACENT LINEMARKING GUIDE UNLESS DETAILED OTHERWISE

**NOTES:**

- THE SYMBOLS FOR RRPMs ARE GENERALLY DERIVED FROM AS1742.2
- REFER ACTSD-0101 FOR NOMINAL KERB LINE LOCATION FOR VARIOUS KERB TYPES
- ALL LINEMARKING TO BE IN ACCORDANCE WITH THE PAVEMENT MARKING SPECIFICATIONS
- ALL DIMENSIONS SHOWN ARE IN mm UNLESS SHOWN OTHERWISE
- TO PROVIDE CONTRAST YELLOW PATH LINES SHALL BE USED ON LIGHT COLOURED SURFACES. WHERE THE LINE IS YELLOW, THE LINETYPE COLOUR SHALL BE INDICATED WITH "(Y)" SHOWN AFTER THE NUMBER. EG A YELLOW B2T WOULD BE ANNOTATED AS B2(Y)T
- TACTILE MARKERS SHALL BE FORMED USING 2.3mm THERMOPLASTIC (MAXIMUM LAYER THICKNESS ALLOWING FOR FUTURE ADDITIONAL MAINTENANCE COATING IS 4.6mm)
- REFER TO AS1742.2 - 2009 TABLE 5.5 FOR REQUIREMENTS
- NSW RMS ENHANCED DELINEATION DEVICES MAY BE USED WITH THE APPROVAL OF THE ROAD AUTHORITY
- RRPMs TO FACE ONCOMING ROAD TRAFFIC
- DESIGN DRAWINGS ARE TO DENOTE MATERIAL TYPE USED IF IT DOES NOT CORRESPOND TO THE LINEMARKING GUIDE MATERIAL (EG. (PAINT) OR (LLM))
- DKE INTERSECTION TREATMENT - P2 LINE ON TRACK SIDE AND P3 LINE ON ROAD SIDE - DERIVED FROM CMET LIGHT RAIL
- 3600 DESIRABLE MINIMUM WIDTH OR 3000 ABSOLUTE MINIMUM WIDTH. MAY BE INCREASED WHERE WARRANTED BY SURROUNDING ENVIRONMENT



**DEFINITIONS OF LANE WIDTHS (SINGLE CARRIAGEWAY)**



**DEFINITIONS OF LANE WIDTHS (DUAL CARRIAGEWAY)**

**ACT Government**

**STANDARD DRAWING**

**PAVEMENT MARKINGS LINEMARKING TYPES**

Authorised: 02 February 2023

Latest Revision Details

1	BASED ON EAN-17	13-12-22
0	BASED ON DRG DS9-01	19-12-18

Rev	Amendment	Date
Drawing No. ACTSD-3501		Revision 1