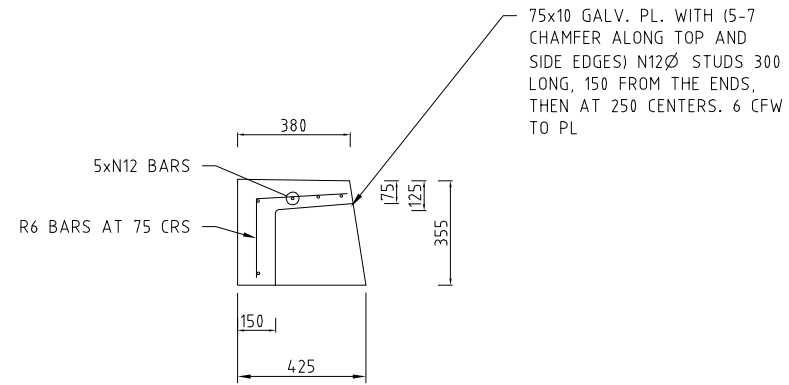
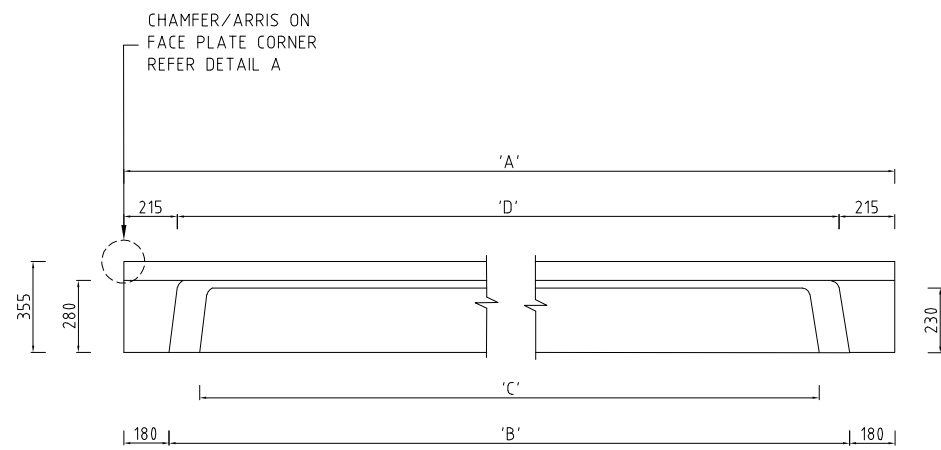


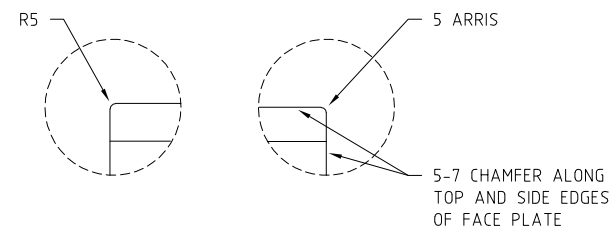
PRECAST CONCRETE LINTEL PLAN



SECTION 1



CONCRETE LINTEL ELEVATION PRECAST



FACE PLATE CORNER TREATMENTS DETAIL A

NOTES:

- REFER TO DRAWING ACTSD-0000 FOR GENERAL NOTES.
- REFER TO DRAWING ACTSD-0822 FOR SUMP DETAILS.
- PRECAST CONCRETE LINTEL TO BE GRADE N30 AND CONFIRM TO AS 3600.
- COVER TO ALL BARS TO BE 40 MINIMUM.
- REINFORCEMENT STEEL TO CONFORM TO AS 1302.
- EACH LIFTING ANCHOR TO BE 'SWIFTLIFT' OR EQUIVALENT 1.3 TONNE GALVANISED AND FITTED TO MANUFACTURERS SPECIFICATION.
- 'XS' (1.2m) LINTEL ONLY TO BE USED FOR 'ANTI-PONDING' APPLICATIONS AND NOT TO BE INCLUDED IN HYDRAULIC CALCULATIONS.

TABLE 1 : LINTEL TYPICAL DIMENSIONS

LINTEL	'A' mm	'B' mm	'C' mm	'D' mm	'X' mm	MASS (kg)
XS	1200	840	600	770	400	300
S	2400	2040	1800	1970	400	500
M	3600	3240	3000	3170	690	700
L	4800	4440	4200	4370	1000	900



STANDARD DRAWING

KIS SUMPS LINTEL DETAILS

NOT TO SCALE

Authorised: *[Signature]*

Latest Revision Details

Rev	Amendment	Date
0	BASED ON DRG BSD-8055	14/01/19
Drawing No. ACTSD-0824		Revision 0