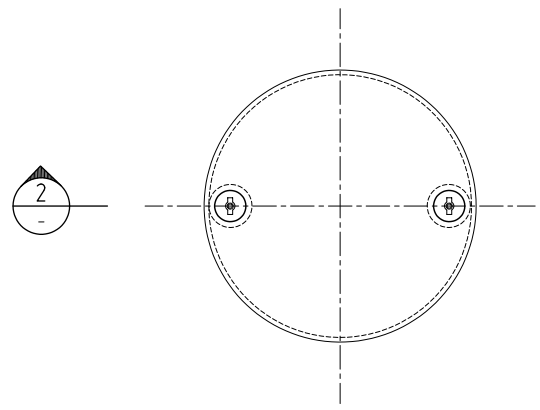
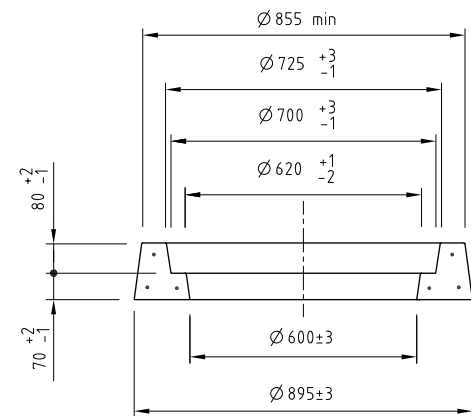


PLAN

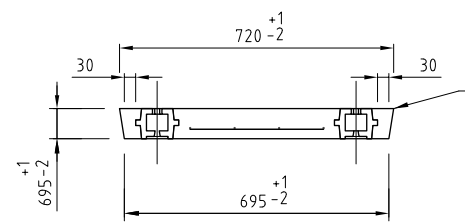
SEATING RING FOR MANHOLE COVER



PLAN

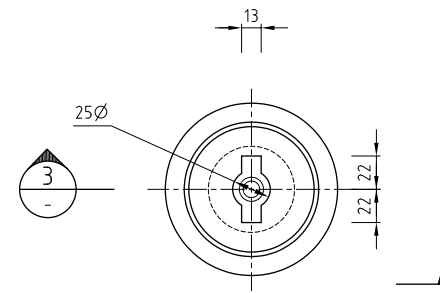


SECTION 1

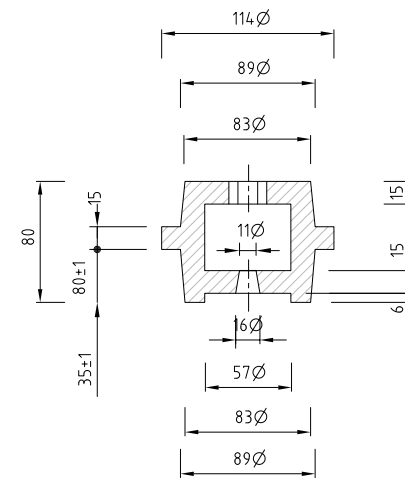


SECTION 2

MANHOLE COVER



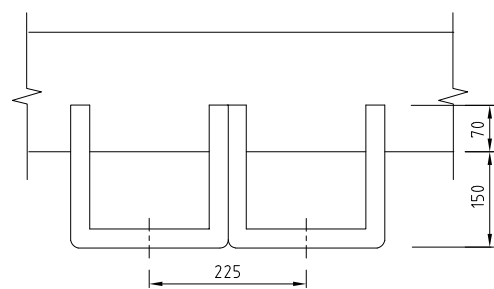
PLAN



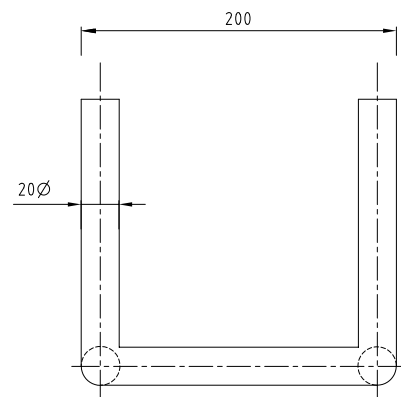
SECTION 3

DETAIL A: LIFTING BOSS

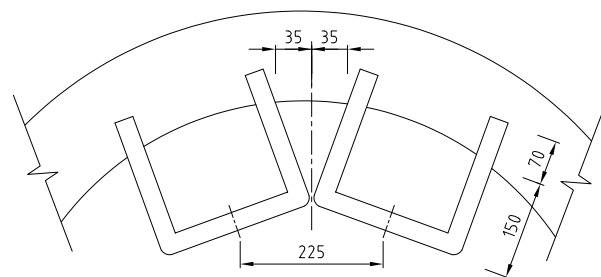
MATERIAL - CAST IRON AS1830 GRADE T200



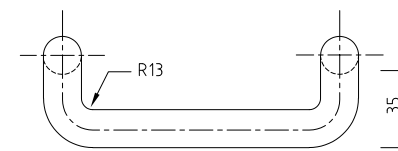
**PLAN LAYOUT FOR SUMPS
STEPIRON DETAILS**



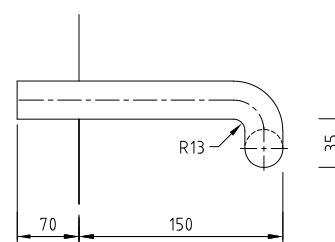
PLAN



PLAN LAYOUT FOR MANHOLES



FRONT ELEVATION



SIDE ELEVATION

NOTES:

1. REFER TO DRAWING ACTSD-0000 FOR GENERAL NOTES.
2. MINIMUM CONCRETE COMPRESSIVE STRENGTH SHALL BE 32 MPa TO AS 3600.
3. MANHOLE COVER AND SEATING RING SHALL COMPLY WITH AS 3996.
4. COVERS SHALL BE PROVIDED WITH A NON-SLIP SURFACE FINISH.
5. COVERS FOR STORMWATER MANHOLES SHALL HAVE THE LETTERS 'SW' 75mm HIGH FORMED IN SURFACE.
6. ALL STEELWORK, INCLUDING STEPIRONS, BOLTS, NUTS AND WASHERS SHALL BE FORMED FROM 20mm DIAMETER DEFORMED BAR GRADE 230S IN ACCORDANCE WITH AS 4671.
7. STEPIRONS SHALL BE HOT-DIPPED GALVANISED IN ACCORDANCE WITH AS 4680.
8. STEPIRONS SHALL BE INSTALLED IN MANHOLES 850-3000mm DEEP IN ACCORDANCE WITH AS 1657.
9. INSTALL FIXED ACCESS LADDERS IN MANHOLES GREATER THAN 3000 DEEP IN ACCORDANCE WITH AS 1657.
9. ALL DIMENSIONS IN mm UNO.



ACT
Government

STANDARD DRAWING

**STRUCTURES
MISCELLANEOUS
DETAILS**

NOT TO SCALE

Authorised: *[Signature]*

Latest Revision Details

Rev	Amendment	Date
0	BASED ON DRG ST-0017	14/01/19

Drawing No.	Revision
ACTSD-0830	0