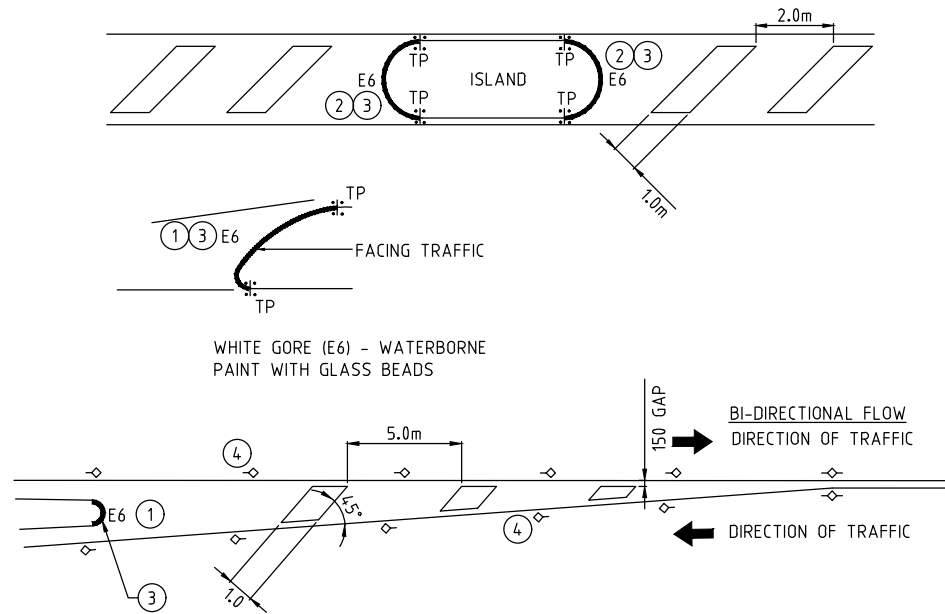
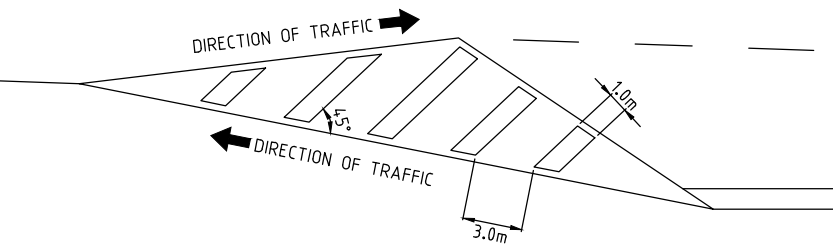
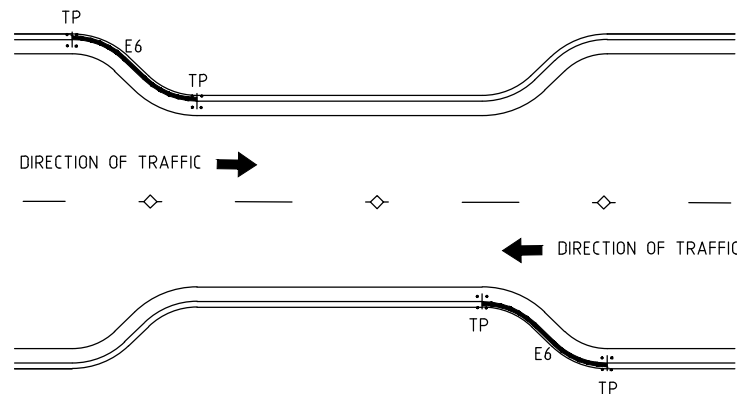


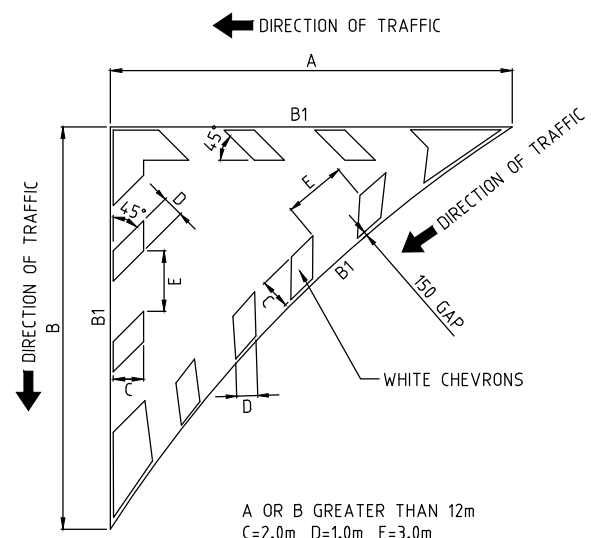
**DIAGONAL MEDIAN MARKING  
FLUSH MEDIAN DETAIL**



**RAISED ISLAND GORE APPROACHES**



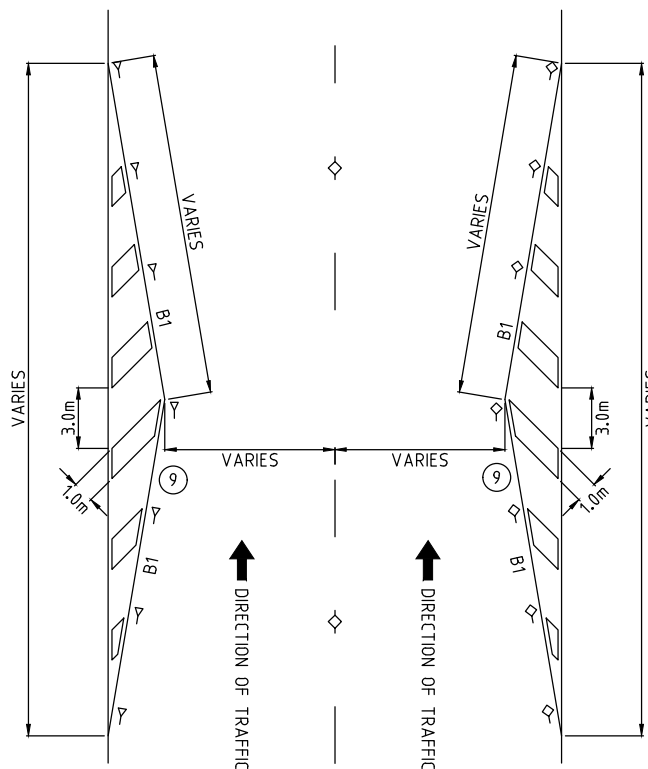
**KERBED LANE NARROWING APPROACHES**



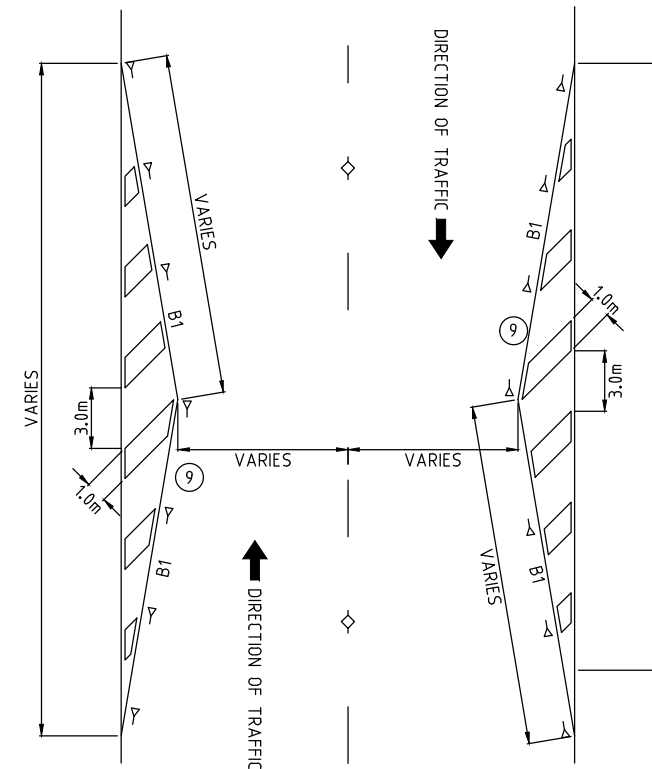
A OR B GREATER THAN 12m  
C=2.0m, D=1.0m, E=3.0m

A AND B ARE BOTH LESS THAN  
OR EQUAL TO 12m  
C=1m, D=0.6m, E=1.5m

**CHANNELISING ISLAND  
TYPICAL TREATMENT - PAVEMENT MARKING FOR CHEVRONS**



**BLISTER ISLANDS - ONE WAY**



**BLISTER ISLANDS - TWO WAY**

**NOTES:**

- ① FOR TRIANGULAR ISLANDS WITH EACH SIDE  $\leq 5.0m$ , ALL KERB LENGTHS TO BE PAINTED WITH WHITE GORE (E6)
- ② FOR REFUGE ISLANDS  $\leq 10m$  LENGTH ALL KERB LENGTHS TO BE PAINTED WITH WHITE GORE (E6)
- ③ PAINT ISLAND NOSE TP TO TP WITH WHITE GORE
- ④ YELLOW UNIDIRECTIONAL RRPM'S IN GORE AREA TO BE AT 6.0m CENTRES (TYPICAL)
- ⑤ FLUSH MEDIAN IS TYPICALLY USED ON THE APPROACH TO AN OBSTRUCTION THAT IS OVER A CREST OR IN AREAS OF POOR SIGHT DISTANCE. INSTALL DIAGONAL ROWS OF BIDIRECTIONAL YELLOW RRPM'S BETWEEN EVERY SECOND CHEVRON. PROVIDE 100mm GAP BETWEEN RRPM'S. FACE OF RRPM TO BE PARALLEL TO DIRECTION OF TRAVEL.
- ⑥ SPACING MAY BE INCREASED UP TO 20m FOR HIGH SPEED (GREATER THAN OR EQUAL TO 80km/h) ROADS WITH BIDIRECTIONAL YELLOW RRPM'S IN EVERY SECOND GAP BETWEEN EVERY CHEVRONS. PROVIDE 150mm GAP BETWEEN RRPM'S.
- 7 REFER TO STANDARD DRAWING ACTSD-3503 FOR CHEVRON WIDTHS
- 8 ALL DIMENSIONS SHOWN ARE IN mm UNLESS SHOWN OTHERWISE
- ⑨ TAPER LENGTHS ARE TO BE BASED ON A LATERAL SHIFT OF 1m PER SECOND OF TRAVEL



**PAVEMENT MARKINGS  
CHEVRONS AT  
ISLANDS AND MEDIANS**

Authorised: *[Signature]*  
Latest Revision Details

0	BASED ON DRG DS9-05	19-12-18
Rev	Amendment	Date
Drawing No. ACTSD-3502		Revision 0