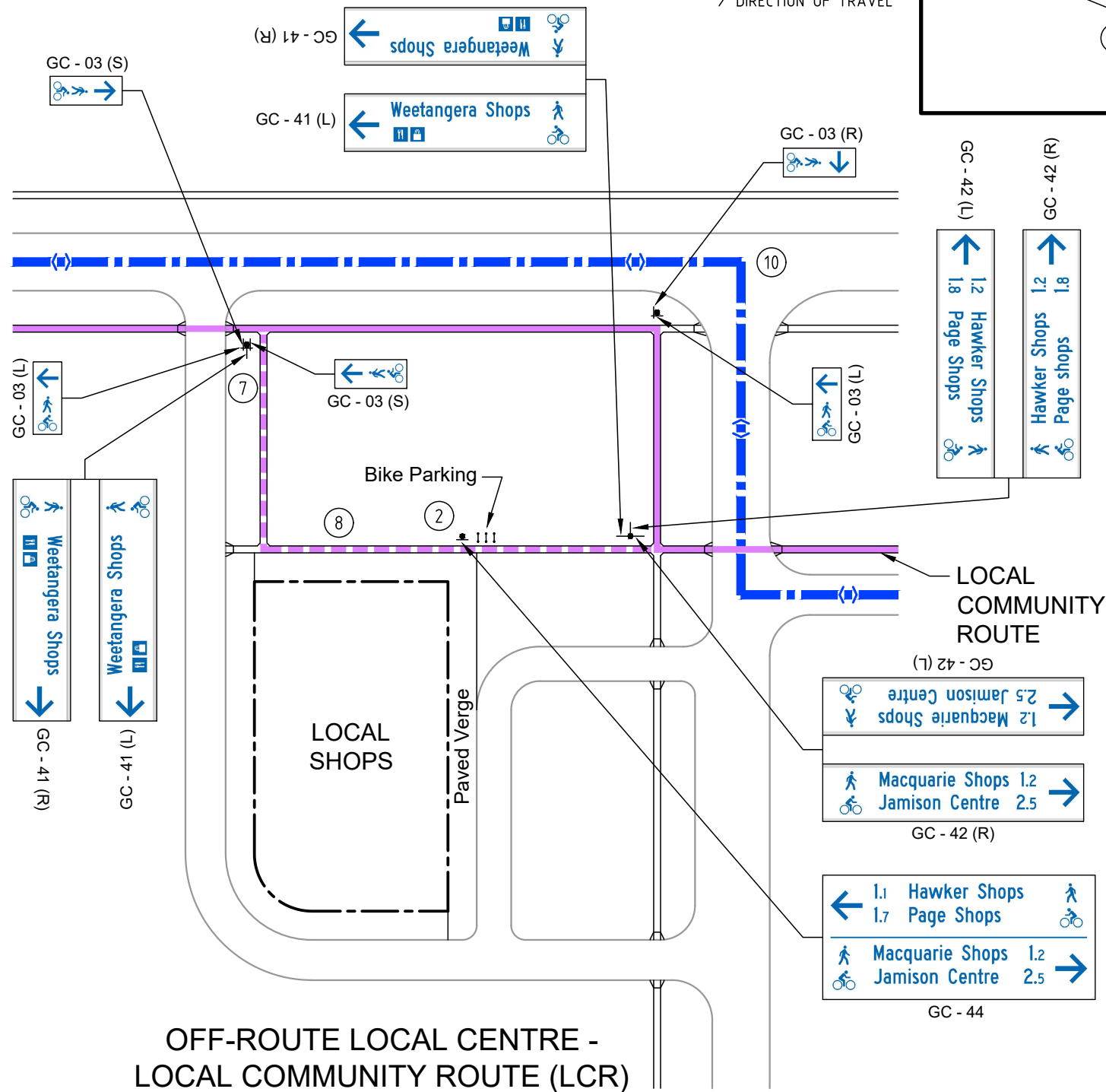


NOTES

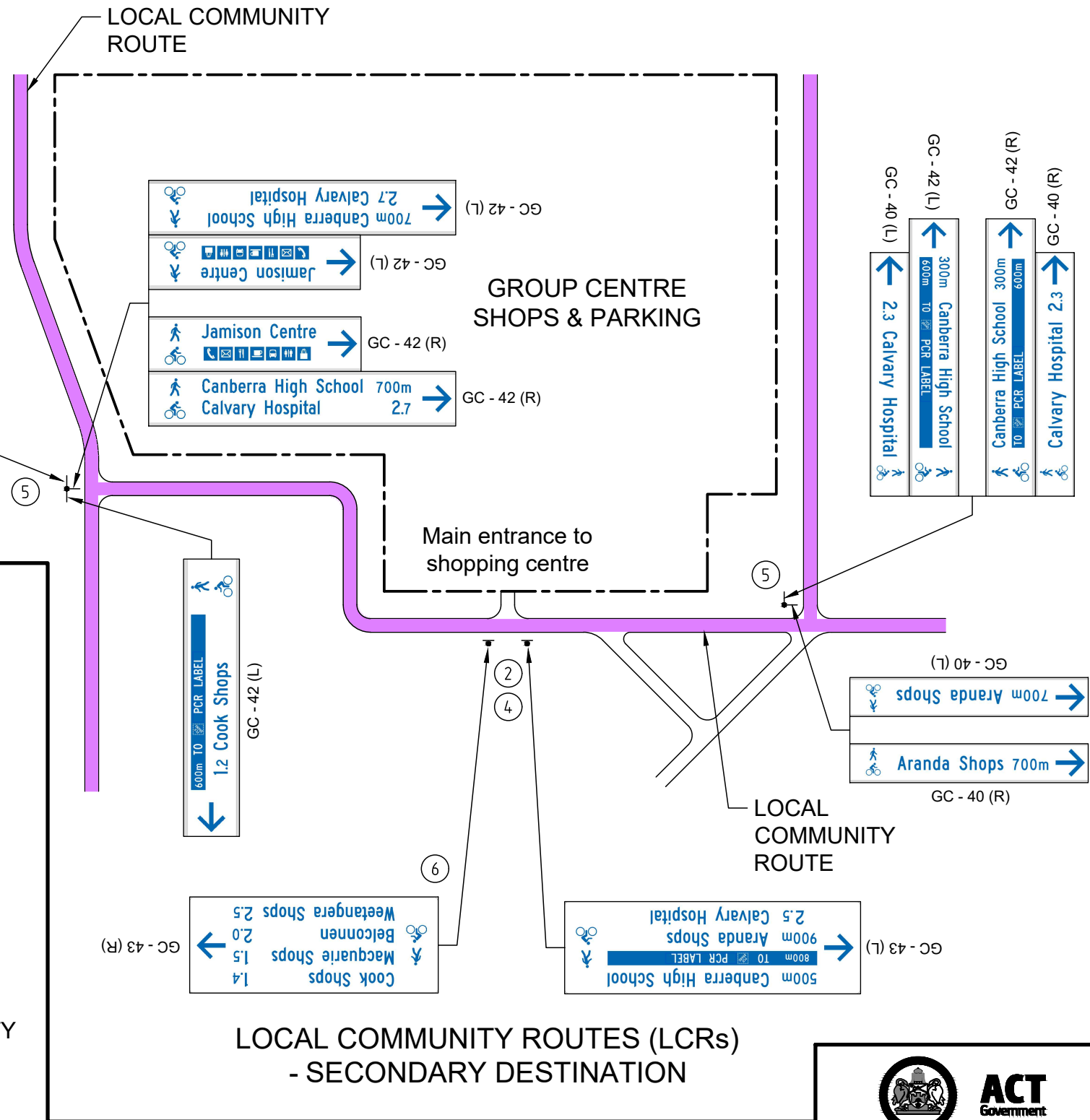
- 1 THIS DRAWING IS TO BE READ IN CONJUNCTION WITH MIS05 4.10.
- 2 LOCATE ROUTE COMMENCEMENT SIGNS (GC-43/44) IN VIEW OF SHOPPING CENTRE ENTRANCES AND PREFERABLY NEAR FOCAL POINT.
- 3 DIRECTIONAL SIGNAGE IN ESTATE DEVELOPMENT IS NOT TO BE INSTALLED UNTIL SUITABLE FACILITIES EXIST AND LINK TO ALL DESTINATIONS SHOWN ON SIGNS. DIRECTIONAL SIGNAGE IS TO BE SYSTEMATICALLY INSTALLED TO ENSURE USERS CAN NAVIGATE TO ALL DESTINATIONS SHOWN. REFER TO MIS05 4.10.10 FOR GUIDANCE DETAILS.
- 4 ALL DESTINATIONS INCLUDED ON THE COMMENCEMENT SIGN ARE TO BE INCLUDED ON THE DESTINATION SIGNAGE UNTIL THE DESTINATION IS REACHED.
- 5 SIGNAGE TO BE INSTALLED FOR MAXIMUM VISIBILITY ON APPROACHES AND DOUBLE SIDED WHERE VISIBLE FROM BOTH SIDES AS ILLUSTRATED.
- 6 'TOWN CENTRE' TO BE USED INSTEAD OF TOWN CENTRE FOCAL POINT NAME FOR DISTANCES LESS THAN 2km.

LEGEND

ACTIVE TRAVEL STREET
 MIXED TRAFFIC ROADWAY / DIRECTION OF TRAVEL



OFF-ROUTE LOCAL CENTRE - LOCAL COMMUNITY ROUTE (LCR)



NOTES (CONTINUED)

- 7 SIGNAGE ON THROUGH ROUTE IS ONLY REQUIRED AT ONE OF THE CONNECTIONS TO THE DESTINATION. REASSURANCE SIGNAGE MAY BE USED AT THE SECOND CONNECTION.
- 8 LOCAL COMMUNITY ROUTES ARE NOT CONTINUED THROUGH LOCAL CENTRES IN RETROFIT WHEN THERE IS THE RISK OF CONFLICT BETWEEN SHOPPERS AND THROUGH ROUTE USERS.
- 9 ONLY ENDORSED FOCAL POINT NAMES ARE TO BE INCLUDED AS DESTINATIONS ON DIRECTIONAL SIGNAGE. REFER TO THE ATIPT FOR THE LIST OF ENDORSED FOCAL POINTS INCLUDING POSITION AND ANY ABBREVIATIONS.
- 10 REFER TO ACTSD-0511 FOR DETAILS OF WAYFINDING PAVEMENT MARKINGS FOR USE ON ACTIVE TRAVEL STREETS.
- 11 PRINCIPAL COMMUNITY ROUTES LABELS AND BRANDING ARE AS SHOWN ON ACTSD-0575.

ACT Government

STANDARD DRAWING

MAIN AND LOCAL COMMUNITY ROUTES DIRECTIONAL SIGNAGE AT SECONDARY AND LOCAL DESTINATIONS

Authorised: Ken Marshall

Latest Revision Details

Rev	Amendment	Date
1	NOTES 2 & 3 AMENDED NOTE 7 REMOVED	09/11/20
0	FIRST ISSUE	28/09/18

Drawing No. **ACTSD-0594** Revision **1**