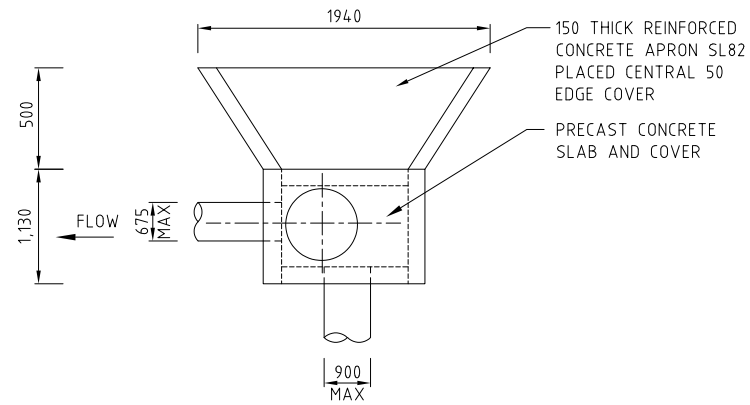
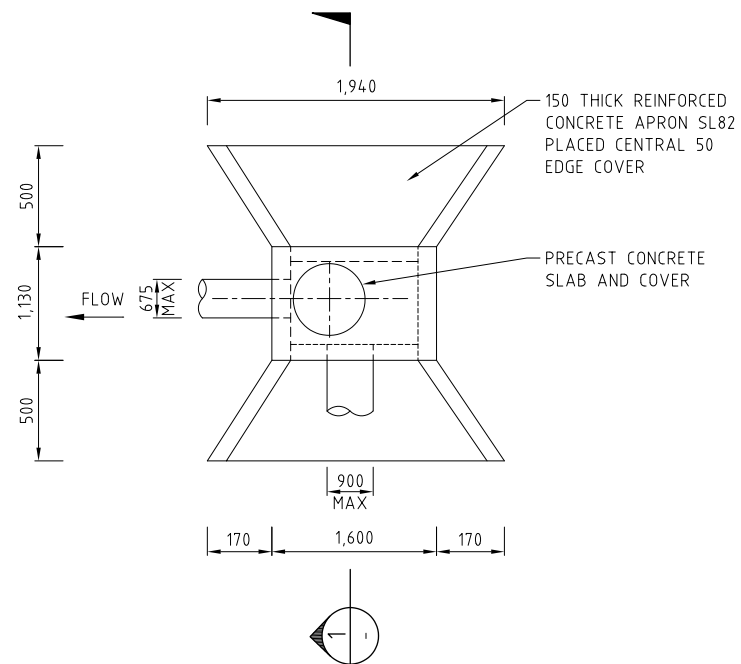


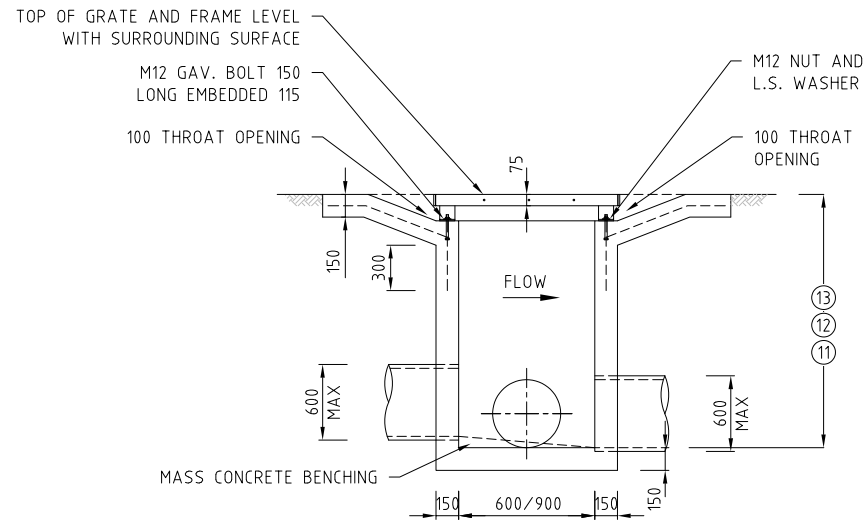
**SECTION TYPE 1** ①



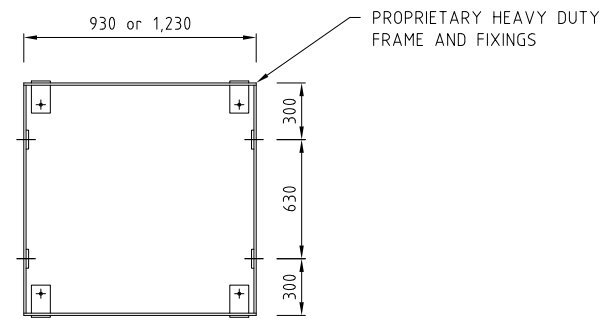
**TYPE 1 - PLANTATION SUMP PLAN (SINGLE SIDED)**



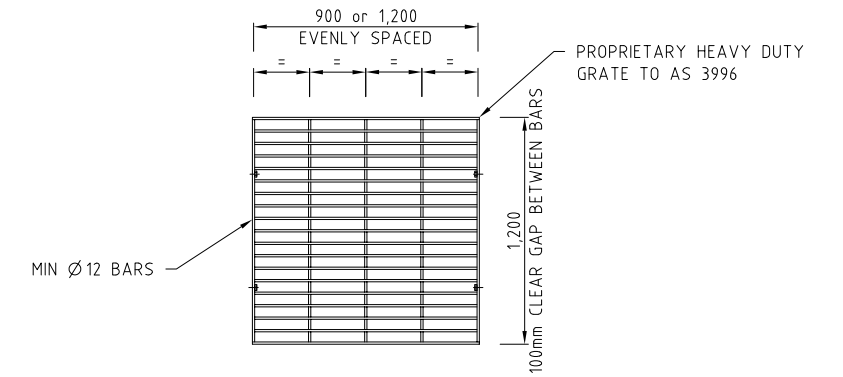
**TYPE 1 - PLANTATION SUMP PLAN (DOUBLE SIDED)**



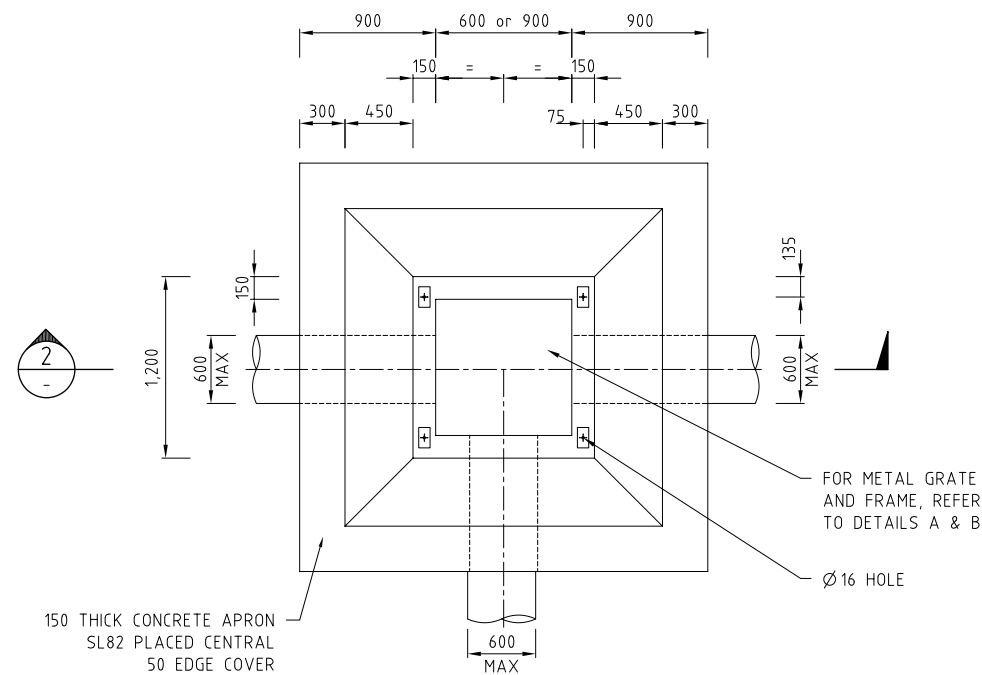
**SECTION TYPE 2** ②



**TYPE 2 - FRAME DETAIL B (900 x 900 FRAME SHOWN)**



**TYPE 2 - GRATE DETAIL A (900 x 900 GRATE SHOWN)**



**TYPE 2 - GRATED SUMP PLAN (900 x 900 PIT SHOWN) GRATE OMITTED FOR CLARITY**

**NOTES:**

1. REFER TO DRAWING ACTSD-0000 FOR GENERAL NOTES.
2. MINIMUM CONCRETE COMPRESSIVE STRENGTH SHALL BE 32 MPa TO AS 3600.
3. ALL WELDS TO AS 1554.
4. GRATES AND FRAMES TO COMPLY WITH AS 3996 CLASS B DESIGN.
5. GRATE AND FRAME TO BE HOT DIP GAL. AFTER FABRICATION TO AS 4680.
6. REINFORCING BARS GRADE 500 MPa TO AS 1302 UNO.
7. ALL FLATS GRADE 250 MPa TO AS 3678.
8. ALL ANGLES GRADE 250 MPa TO AS 3679.
9. BOLTS, NUTS AND WASHERS TO AS 4680.
10. HOT DIP GALVANISE BOLTS AND NUTS TO AS 1214. HOT DIP GALVANISE WASHERS TO AS 4680.
- ①① FOR SUMPS WITH A DEPTH > 900 GALVANISED STEP IRONS ARE REQUIRED, SEE DRAWING ACTSD-0826.
- ①② FOR SUMPS WITH DEPTH > 1500 INSTALL SL82 MESH IN ALL WALLS AND FLOOR 50 EDGE COVER.
- ①③ WHERE MINIMUM INTERNAL DIMENSION IS 600, MAXIMUM DEPTH 1800. WHERE MINIMUM INTERNAL DIMENSION IS 900, MAXIMUM DEPTH 3500.



STANDARD DRAWING

**PLANTATION AND GRATED SUMPS IN OPEN SPACE**

NOT TO SCALE

Authorised: *[Signature]*

Latest Revision Details

Rev	Amendment	Date
0	BASED ON DRG ST-0013	14/01/19
Drawing No. ACTSD-0825		Revision 0