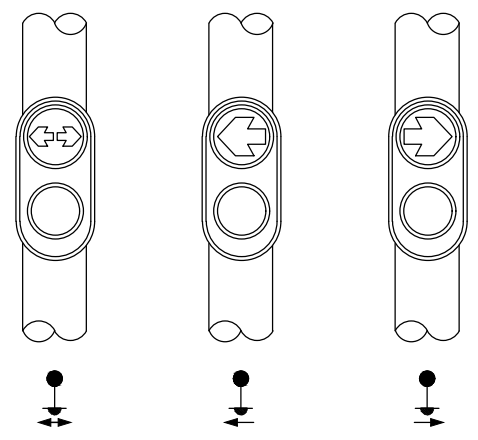
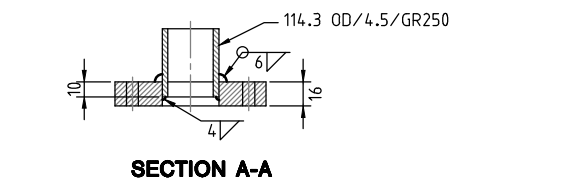


PUSH-BUTTON LOCATIONS

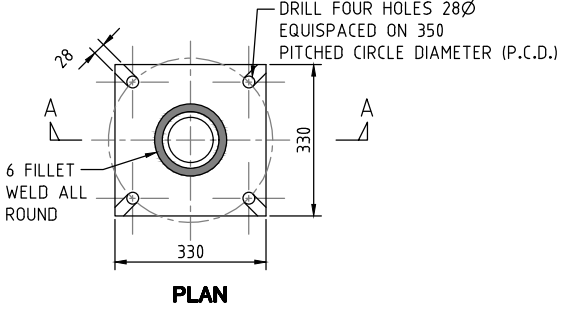
NOTE:
ALL PUSH-BUTTONS MUST BE LOCATED 2.0m MIN APART



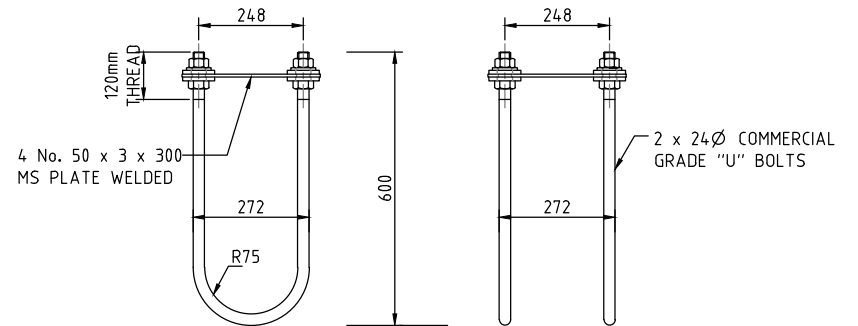
PUSH-BUTTON LEGEND



SECTION A-A



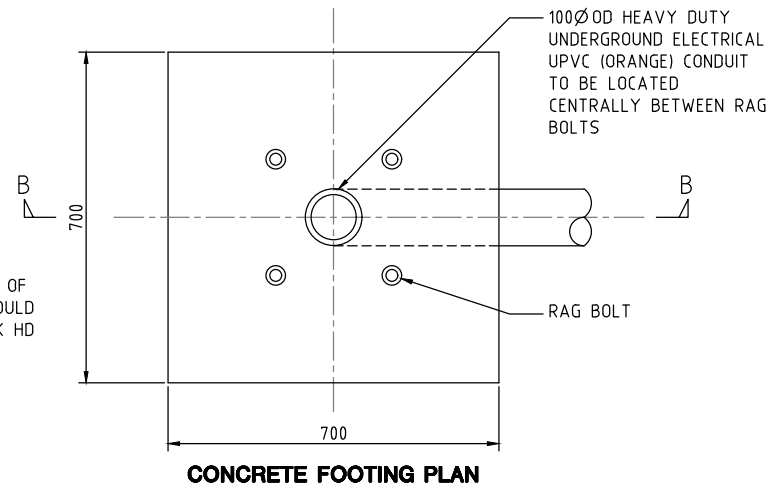
BASE PLATE



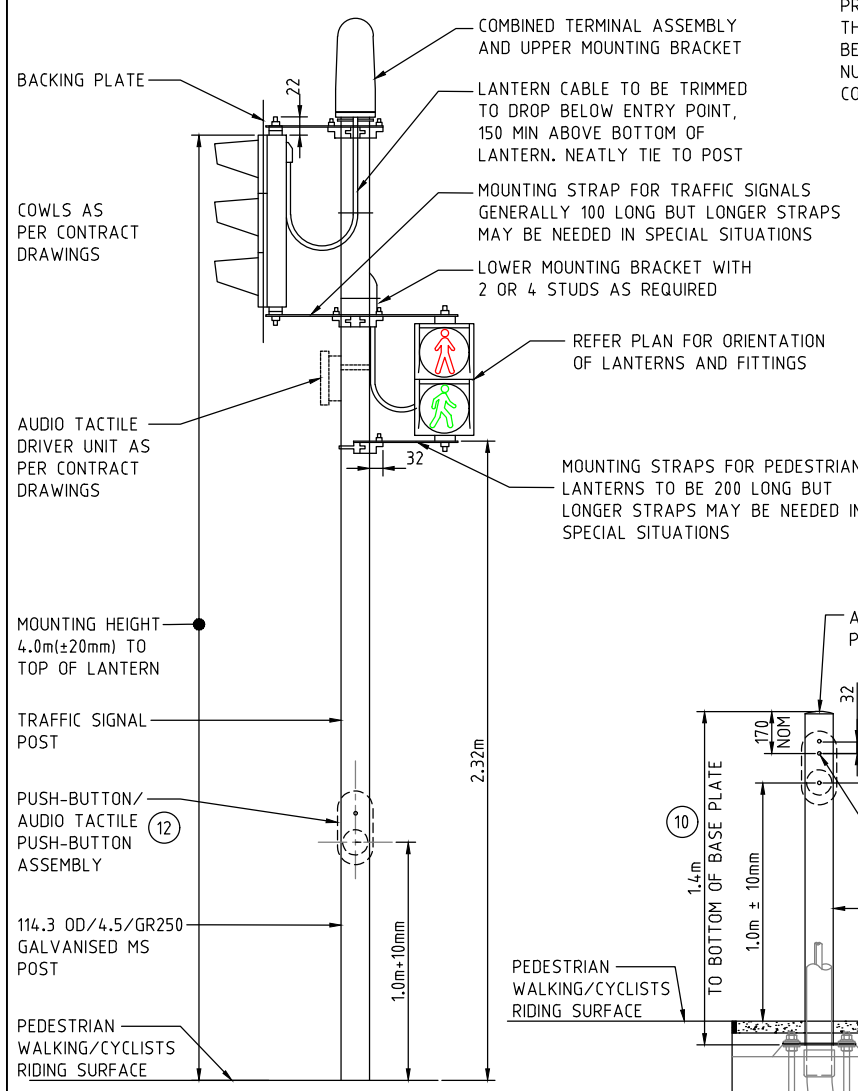
TRAFFIC SIGNAL POST RAG BOLT DETAIL

NOTES:

- ALL DIMENSIONS ARE IN MILLIMETERS UNLESS OTHERWISE SHOWN.
- ALL CABLES SHALL TERMINATE INTO A NEARBY CONDUIT JUNCTION PIT WITH A MINIMUM OF 2.0m CABLE SLACK IN IT BEFORE CONTINUING INTO THE FOUNDATION.
- STRENGTH OF CONCRETE SHALL BE 32MPa AT 28 DAYS.
- CLEAR COVER TO REINFORCEMENT SHALL BE 50mm MINIMUM.
- ALL BOLTS SHALL BE COMMERCIAL GRADE AND HOT DIPPED GALVANIZED.
- THREADED PORTION OF ALL RAG BOLTS TO BE COATED WITH GRAPHITE, GREASE OR SIMILAR BEFORE ASSEMBLY.
- ALL PUSH-BUTTON ASSEMBLIES SHALL BE AUDIO TACTILE AND SHALL ONLY BE INSTALLED WHERE SPECIFIED ON THE DESIGN PLANS.
- WHERE SHORT PUSH-BUTTON POSTS ARE INSTALLED, THE AUDIO TACTILE DRIVER UNIT IS TO BE MOUNTED ON THE NEAREST SIGNAL POST CARRYING THE ASSOCIATED "WALK" SIGNAL ACTIVE.
- PROVISION IS TO BE MADE FOR A CONTINUOUS 240V ACTIVE AT THE TOP OF EVERY POST REQUIRING AN AUDIO TACTILE DRIVER UNIT. THIS 240V ACTIVE SUPPLY SHALL BE TAKEN FROM THE LOAD SIDE OF THE LAMP BLACK-OUT RELAY CONTACT (VIA THE FACILITY SWITCH AND LAMP FUSE) i.e. THE 240v SUPPLY MUST NOT BE TAKEN FROM THE DETECTOR OR CONTROLLER FUSE.
- REFER MIS05 FOR EQUESTRIAN PUSH-BUTTON TRAFFIC SIGNAL POST REQUIREMENTS.
- CYCLIST PUSH BUTTONS ARE TO BE INSTALLED ADJACENT TO THE BICYCLE LANE ON MAIN ON-ROAD CYCLING ROUTES AND ADJACENT TO THE ROADWAY ON ACTIVE TRAVEL STREETS (CONTACT TRAFFIC SIGNALS UNIT FOR REQUIREMENTS)
- PUSH BUTTONS ARE TO BE INSTALLED TO ALLOW FOR USE BY CYCLISTS ON MAIN AND LOCAL COMMUNITY ROUTES. THE POSITION OF THE PUSH BUTTON AND SHAPE OF REFUGE ISLAND AND KERB SLOT ARE TO BE DESIGNED TO ALLOW FOR A CYCLIST TO PUSH THE BUTTON WHILST REMAINING MOUNTED ON THE BICYCLE. BICYCLE ESCUTCHEON PLATES SHALL BE PROVIDED AT BICYCLE ONLY CROSSINGS
- CONCRETE CAPPING SHALL BE PROVIDED IN ALL AREAS (INCLUDING LANDSCAPED AREAS).

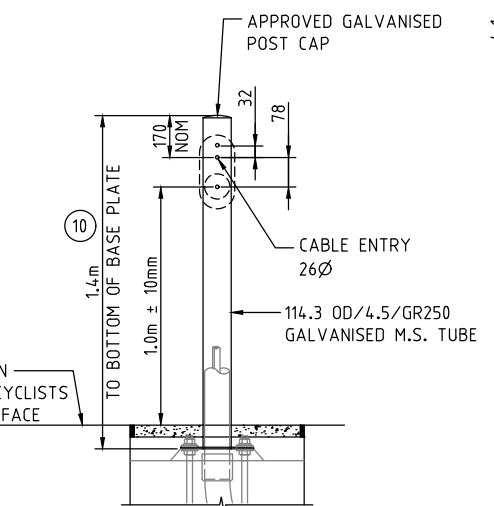


CONCRETE FOOTING PLAN

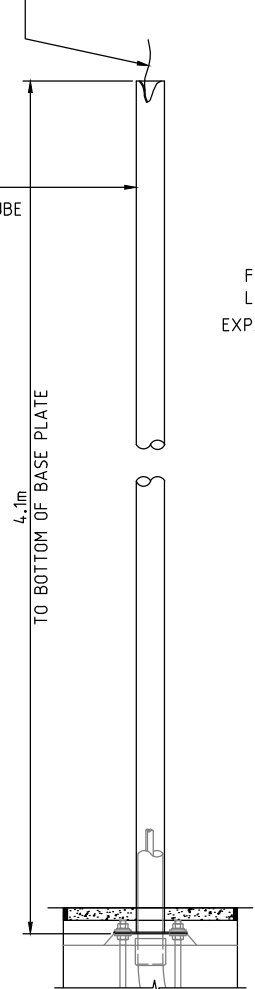


TRAFFIC SIGNAL POST

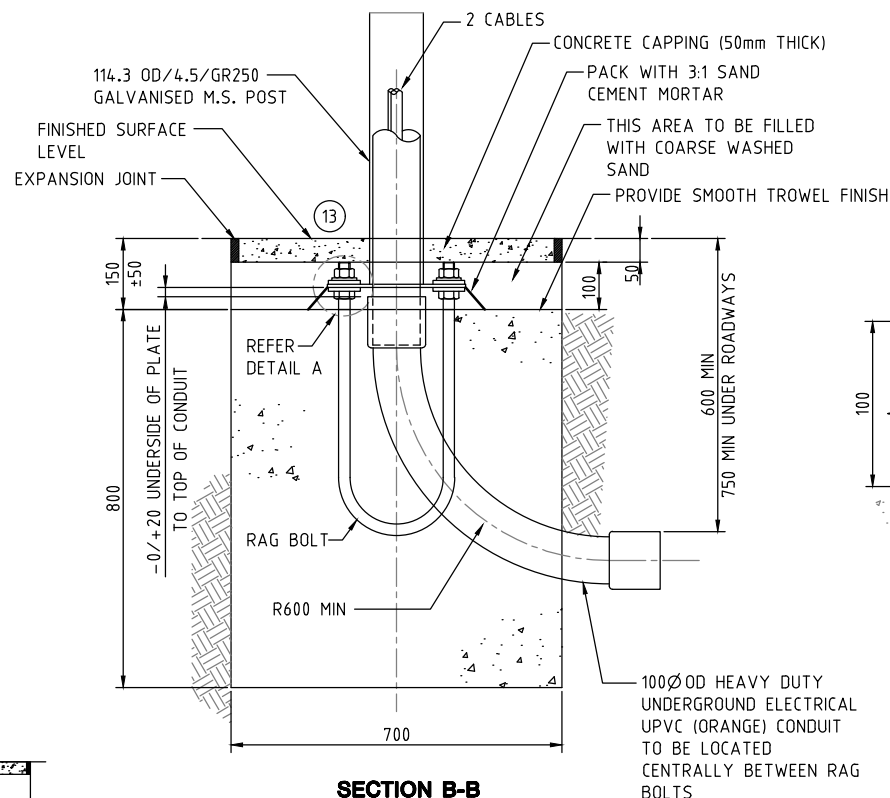
PROVISION FOR EARTHING ON THE INNER SURFACE WITHIN 25 OF THE TOP OF THE POST. A 300 LENGTH OF COPPER WIRE SHOULD BE SUITABLY FASTENED BY A BRASS SCREW (6 x 25 - C'SK HD NUT AND WASHER FASTENED. LENGTH TO BE AT LEAST 50. COPPER WIRE TO BE AT LEAST 7/0.85



PEDESTRIAN / CYCLIST PUSH-BUTTON POST

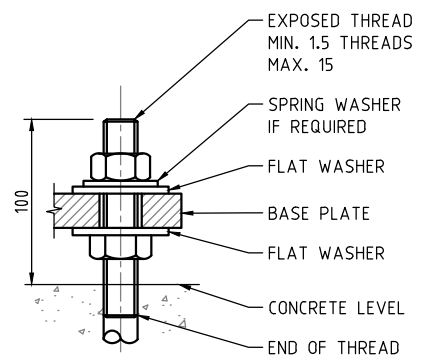


TRAFFIC SIGNAL POST



SECTION B-B

TRAFFIC AND PEDESTRIAN/CYCLIST PUSH-BUTTON SIGNAL POST FOUNDATION



DETAIL A

ACT Government

STANDARD DRAWING

TRAFFIC SIGNALS STANDARD POST ARRANGEMENT

Authorised: *[Signature]*

Latest Revision Details	
Rev	Date
1	19-12-18
0	05-04-17

Rev	Amendment	Date
1	CONDUIT RADIUS INCREASED	19-12-18
0	BASED ON ACTPW DRG S/803/2	05-04-17

Drawing No. **ACTSD-3912** Revision **1**