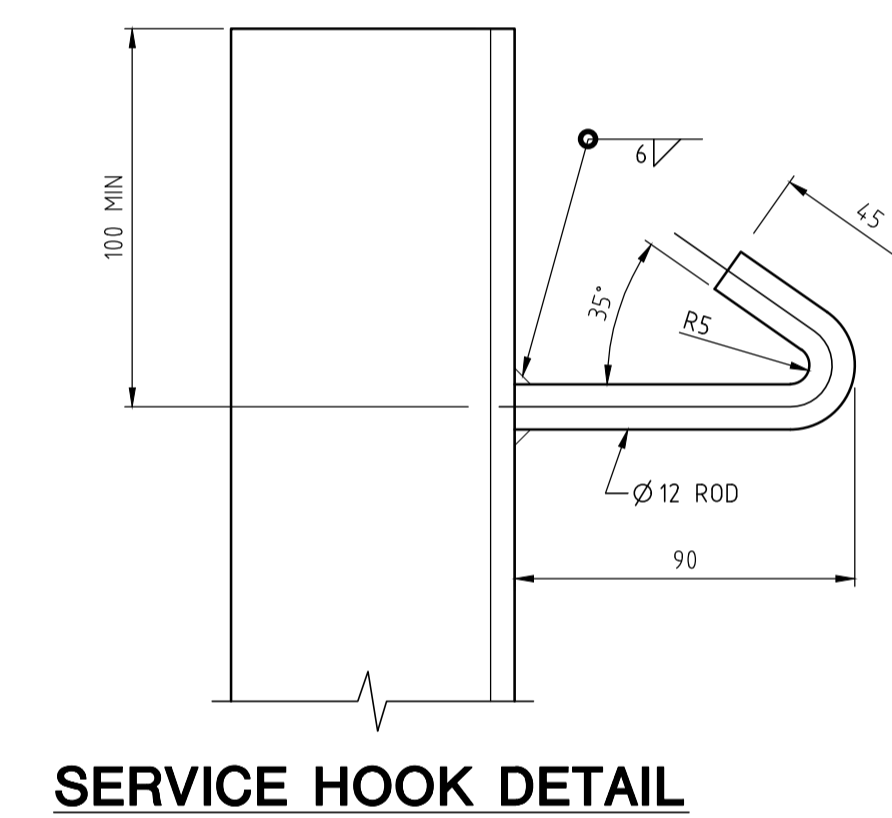
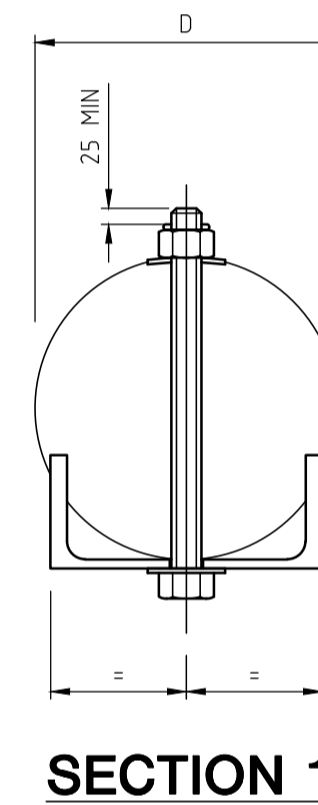
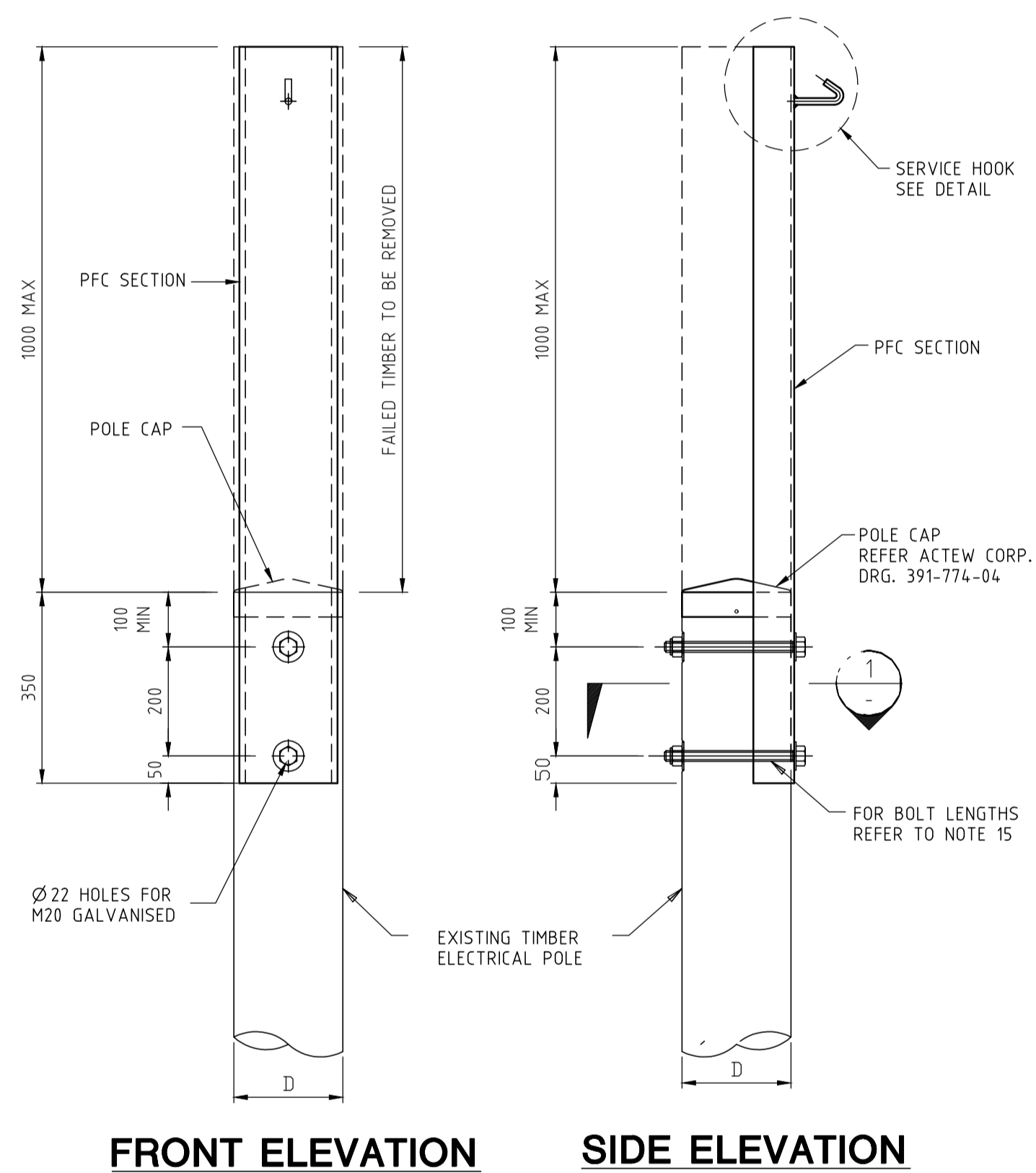


NOTES

1. ALL DIMENSIONS ARE IN MILLIMETRES.
2. SERVICE HOOK SHALL BE HOT ROLLED CARBON STEEL TO AS 1442/ CS 1030.
3. STEEL SECTION SHALL BE GRADE 300 TO AS 3679.
4. HIGH STRENGTH STEEL BOLTS SHALL BE PROPERTY CLASS 8.8 TO AS/NZS 1252.
5. HIGH STRENGTH STEEL NUTS SHALL BE PROPERTY CLASS 10S TO AS/NZS 1252.
6. HIGH STRENGTH STEEL WASHERS SHALL CONFORM TO AS/NZS 1252. 9.
7. THE WELD CATEGORY SHALL BE SP WITH E48XX ELECTRODES IN ACCORDANCE WITH AS 1554 PART 1 U.N.O.
8. WELDING SYMBOLS COMPLY WITH AS 1101 PART 3. EDGES TO BE PROTECTIVE TREATED AND SHALL BE ROUNDED TO A
9. RADIUS OF 1.5mm U.N.O.
10. ALL COMPONENTS SHALL BE HOT DIPPED GALVANISED AFTER FABRICATION IN ACCORDANCE WITH AS 4680.
11. DAMAGED GALVANISED SURFACES SHALL BE RENOVATED WITH A SUITABLE TWO PACK ORGANIC ZINC RICH PRIMER.
12. BOLTS, NUTS AND WASHERS SHALL BE HOT DIP GALVANISED IN ACCORDANCE WITH AS 1214.
13. NOMINAL RATING FOR SERVICE HOOKS IS 4KN IN ACCORDANCE WITH AS 3766-1990.
14. THE PFC SECTION FOR THE BRACKET SHALL BE 150 PFC IF $D < 170\text{mm}$ AND 180 PFC IF $170\text{mm} < D < 210\text{mm}$.
15. LENGTH OF THE M20 GALVANIZED KING BOLTS SHALL BE SUCH THAT THE REQUIREMENT OF SECTION 1 OF THIS DRAWING IS ACHIEVED.
16. POLE BRACKET SHALL NOT BE MOUNTED ABOVE THE EXISTING POLE HEIGHT.



STANDARD DRAWING
ELECTRICAL POLE BRACKET

DRAWING NOT TO SCALE - N.T.S.
Authorised:

Latest Revision Details		
Rev	Amendment	Date
0	BASED ON DRG DS12-04-01	21/12/21
Drawing No. ACTSD-4151		Revision 0