

PRINCIPAL AND MAIN COMMUNITY ROUTE DESTINATION SIGN DESIGN GUIDE

1. LETTERING PLACEMENT:

- LETTER HEIGHT REFERS TO THE 'CAP X' HEIGHT OF THE TYPEFACE - THE HEIGHT OF THE CAPITAL X CHARACTER
- VERTICAL SPACE FROM LETTERING BASELINE OR ASCENDER LINE TO EDGE OF BLADE 1.25 x LETTER HEIGHT MINIMUM
- VERTICAL SPACE FROM PLATE EDGE TO EDGE OF BLADE 1.0 x LETTER HEIGHT MINIMUM
- HORIZONTAL SPACE FROM LETTERING 1.0 x LETTER HEIGHT

2. LINE SPACING:

- VERTICAL 0.6 x LETTER HEIGHT IF NO DESCENDERS (g,p ETC.)
- 0.75 x LETTER HEIGHT IF DESCENDERS OR IF PLATE AND NO DESCENDERS
- 1.0 x LETTER HEIGHT IF PLATE AND DESCENDERS.

3. HORIZONTAL SPACING:

- BETWEEN WORDS OR NUMERALS IN DESTINATIONS - 0.9 x LETTER HEIGHT OR TO CONFORM WITH AS1743 AND AS1744
- FROM ARROW OR PCR BRAND - 1.0 x LETTER HEIGHT

4. SIGNAGE LAYOUT:

- INFORMATION IS TO BE PRESENTED IN ORDER WITH DISTANCE ALWAYS BETWEEN THE DESTINATIONS AND ARROW
- DESTINATIONS ARE ALWAYS LEFT JUSTIFIED WITH JUSTIFICATION POSITION SET BY LONGEST DESTINATION IN A GROUP

5. ARROW PLACEMENT

- STRAIGHT AHEAD ARROWS SHOULD BE PLACED AT THE TOP OF THE STACK WITH THE ARROW ON THE SIDE OF THE SIGN CLOSEST TO THE PATH EDGE. SIGNS SHOULD BE PLACED ON THE LEFT SIDE OF THE PATH WHEREVER POSSIBLE
- WHERE THERE IS NO STRAIGHT AHEAD ARROW AND THERE ARE MULTIPLE ARROWS, THE NEAREST DESTINATION SHOULD BE IN THE GROUP AT THE TOP OF THE SIGN
- WHERE THERE IS A STRAIGHT ARROW AND MULTIPLE OTHER ARROWS, THE STRAIGHT ARROW SHALL BE IN THE PANEL AT THE TOP OF THE SIGN AND THE NEAREST DESTINATION, OF THE REMAINING DESTINATIONS, SHALL APPEAR IN THE NEXT PANEL DOWN
- ANGLED DIRECTIONS - OBLIQUE LEFT (OL) OR OBLIQUE RIGHT (OR) TO BE SHOWN ABOVE LEFT (L) OR RIGHT (R) DIRECTIONS
- ARROWS ARE TO ALTERNATE ON EACH SIDE OF THE STACK DOWN THROUGH THE VARIOUS DIRECTIONS
- ARROWS SHALL APPEAR ON THE SIDE OF THE DIRECTION FOR THE ROUTE. THIS MAY REQUIRE REVISION OF THE ABOVE SUCH THAT THE STRAIGHT ARROW MAY CHANGE TO THE SIDE AWAY FROM THE PATH TO ACCOMMODATE THE ARROWS ALTERNATING ON EACH SIDES OF THE SIGN STACK

6. DESTINATION LIST (PER DIRECTION / ROUTE):

- DESTINATIONS ARE ONLY TO BE FROM THE FOCAL POINT NAMES AVAILABLE FROM THE ATIPT
- LIST OF DESTINATIONS (IF MORE THAN ONE PER DIRECTION / ROUTE) SHOULD BE PRESENTED IN THE DISTANCE ORDER THEY ARE REACHED, NEAREST AT THE TOP
- IF THE DISTANCES ARE THE SAME, THEN THE TOP DESTINATION SHOULD BE THE MOST PROMINENT ROUTE.
- ALL DESTINATIONS IN A DESTINATION LIST ARE TO HAVE THE SAME LEFT JUSTIFICATION
- WHERE A SINGLE DESTINATION IS ON MORE THAN ONE LINE, SUBSEQUENT LINES SHALL BE LEFT JUSTIFIED WITH THE SECOND LETTER OF THE DESTINATIONS FIRST LINE AND THE DISTANCE SHALL BE VERTICALLY CENTRED ON THE CENTRE OF THE DESTINATION LINES

7. DISTANCE INFORMATION:

- IF THE DESTINATION IS VISIBLE FROM THE SIGN LOCATION THE DISTANCE DOES NOT NEED TO BE INCLUDED.
- DISTANCES LESS THAN 1.0km ARE TO BE ROUNDED TO NEAREST 100m E.G. 600m
- DISTANCES FROM 1km TO 10.0km. ARE TO BE ROUNDED TO NEAREST 0.1km E.G. 7.5
- GREATER THAN 10.0km ARE TO BE ROUNDED TO NEAREST Km E.G. 12

8. DISTANCE ALIGNMENT:

- DISTANCE NUMERALS FLUSH RIGHT AND ALIGNED ON THE DECIMAL POINT
- FOR SIGNS SHOWING ONLY DISTANCES WITHOUT DECIMAL POINT, THESE DISTANCE NUMERALS ARE RIGHT ALIGNED WHERE THE DECIMAL POINT WOULD BE IF IT WAS SHOWN

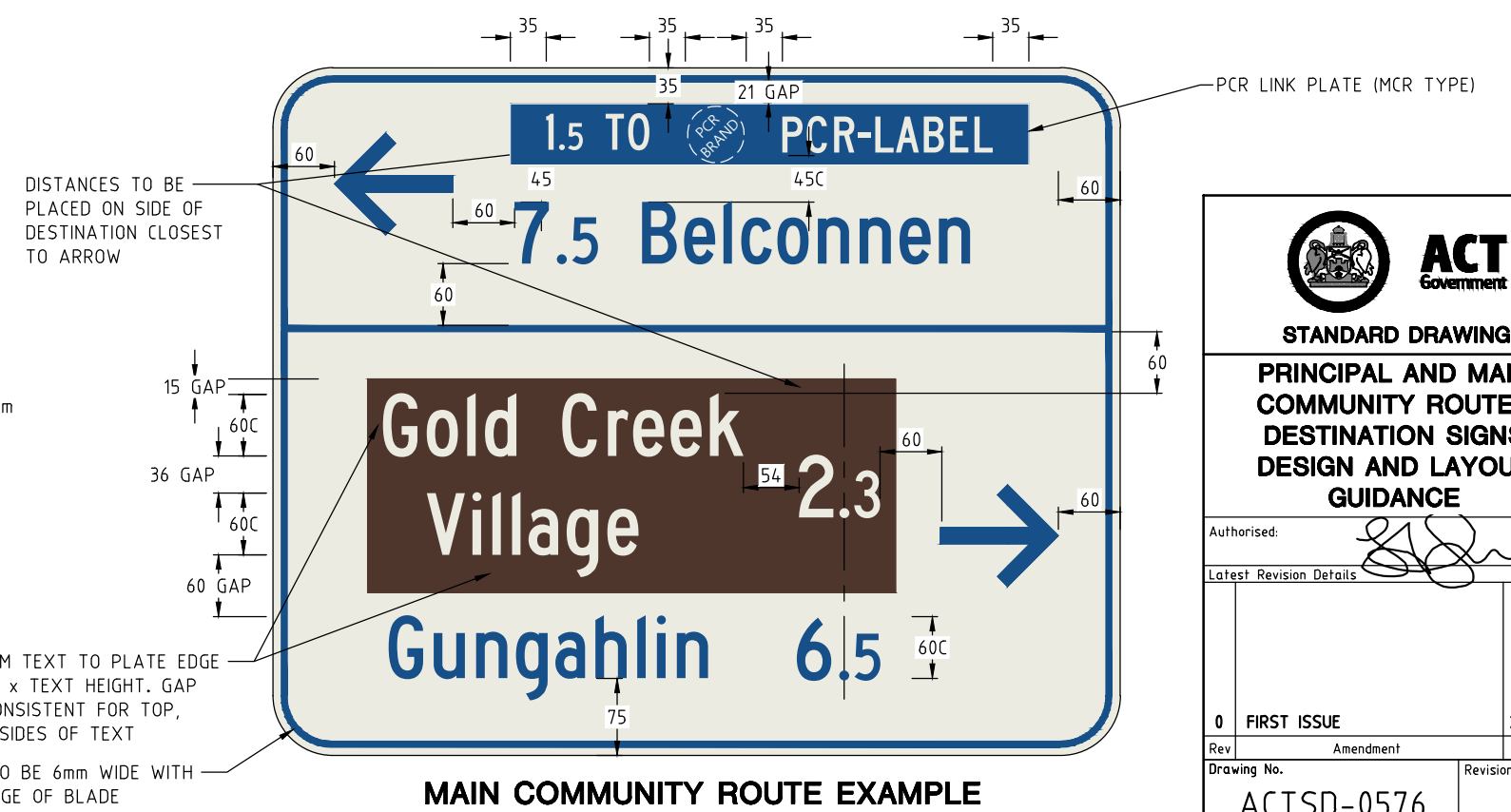
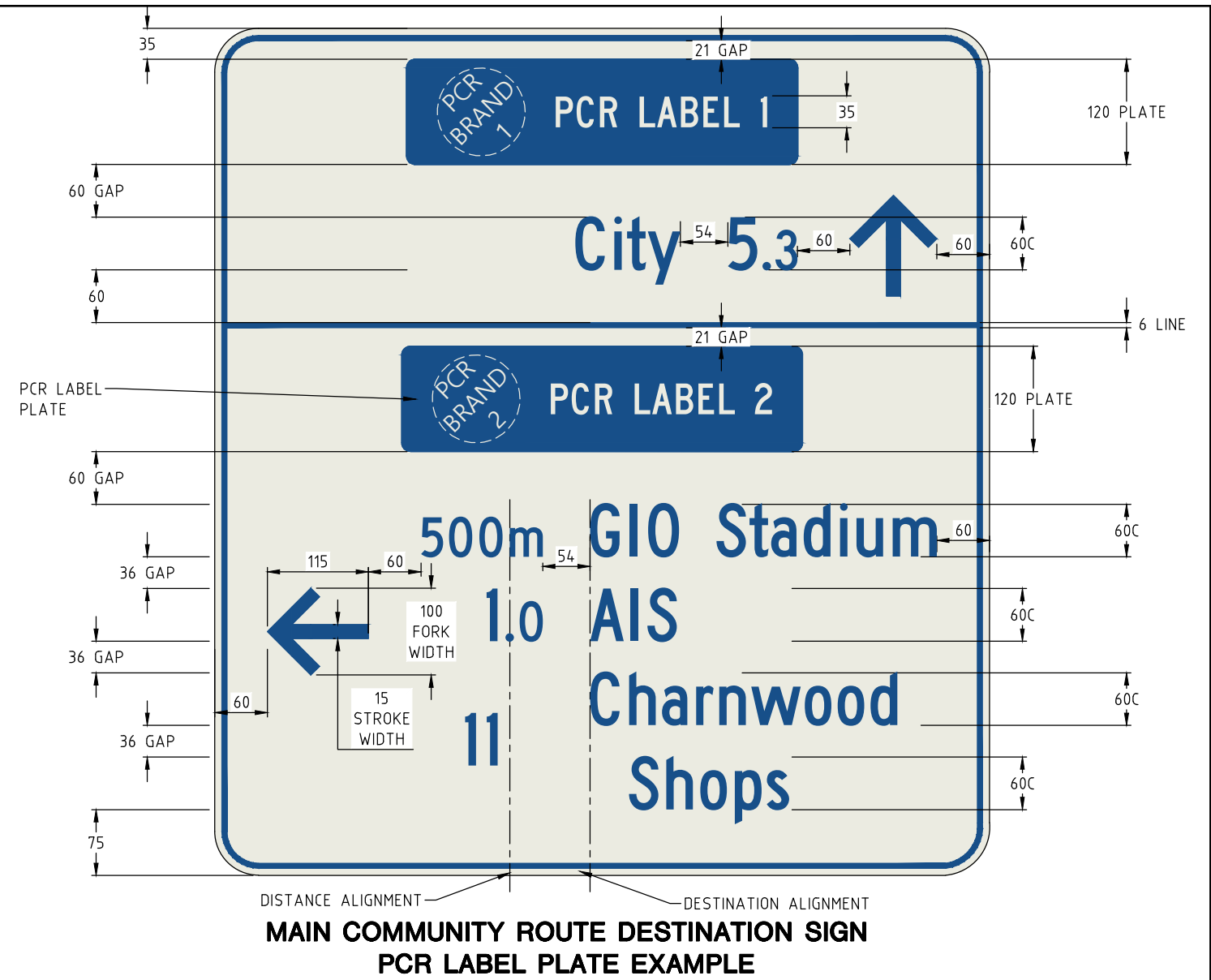
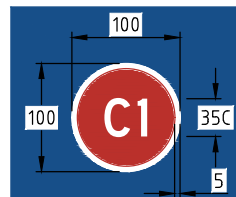
9. PCR LABEL PLATE

PCR LABELS MAY BE INCLUDED ON DESTINATION SIGNS OR A SEPARATE PCR LABEL SIGN (GC-11). REFER TO ACTSD-0577 AND -0591 FOR EXAMPLES. THE PCR LABEL PLATE SHALL HAVE THE SAME OFFSETS AND DIMENSIONS AS A GC-11 EXCEPT

- THE PLATE SHALL HAVE ROUNDED CORNERS, RADIUS 10mm
- THE VERTICAL GAP BETWEEN THE PCR BRAND AND PLATE EDGE OR BETWEEN PCR BRANDS SHALL BE 10mm

10. PCR BRAND FOR SIGNS

- WHERE SHOWN IN A PCR LABEL PLATE THE PCR BRAND SHALL BE 100mm HIGH BY 100mm WIDE, THIS SHALL INCLUDE A 5mm WHITE BORDER
- THE TEXT SHALL BE 35mm HIGH AS1744 SERIES C FONT. REFER TO ACTSD-0575 FOR PCR BRAND AND TEXT COLOUR DETAILS
- WHERE REQUIRED THE BRAND MAY BE SCALED UNIFORMLY



STANDARD DRAWING		
PRINCIPAL AND MAIN COMMUNITY ROUTES DESTINATION SIGNS DESIGN AND LAYOUT GUIDANCE		
Authorised:		
Latest Revision Details		
0	FIRST ISSUE	21/12/20
Rev	Amendment	Date
Drawing No.	Revision	
ACTSD-0576	0	