

DESIGN STANDARDS
for
URBAN INFRASTRUCTURE
9. TRAFFIC CONTROL DEVICES

Tony Gill

Authorised

Director Roads ACT

Tony Gill

15/7/11



9 TRAFFIC CONTROL DEVICES

9.1	Introduction	9-1
9.2	Related codes of practice and guidelines	9-1
9.2.1	Legislation	9-1
9.2.2	Industry standards	9-1
9.2.3	Policy and guidelines	9-1
9.3	Traffic control device design	9-2
9.3.1	General design principles	9-2
9.3.2	Traffic Safety Audits	9-2
9.3.3	Sign materials	9-2
9.3.4	Sign Location	9-3
9.3.5	Road Marking Materials	9-3
9.3.6	Pedestrian crossings and raised platforms	9-4
9.3.7	Kerb Mounted House Numbering	9-4
9.3.8	Hydrant Marking	9-4
9.3.9	ACT Standard Parking Signs	9-4
9.3.10	Ticket Parking, Three for Free, Park and Ride Signs	9-5
9.4	Standard drawings	9-6
9.4.1	Linemarking standards	9-6
9.4.3	Signposting standards	9-6
9.4.4	Typical designs	9-6
9.4.5	Parking signs	9-6
	Appendix A – List of Parking Signs	9-7

9.1 Introduction

With the introduction of the Australian Road Rules to the ACT, all traffic control devices are now designed in accordance with those rules and the appropriate Australian Standards.

9.2 Related codes of practice and guidelines

9.2.1 Legislation

Road Transport (Safety and Traffic Management) Act 1999

Road Transport (General) Act 1999

Disability Discrimination Act 1992 (Cwlth)

9.2.2 Industry standards

Guide to Road Design Part 1-8, AUSTRROADS.

Guide to Traffic Management Part 1-13, AUSTRROADS.

Guide to Road Safety Part 1-9, AUSTRROADS.

AS 1742 (set) Manual of Uniform Traffic Control Devices, Standards Australia

AS 1743 - 2001 Road Signs - Specifications, Standards Australia

AS 1744 - 1975 Standard Alphabets for Road Signs, Standards Australia

AS 4113 – 1993 Traffic signal lamps – Lamps for 240V a.c. operation, Standards Australia

AS 2144 – 2002 Traffic signal lanterns, Standards Australia

AS 2276.1 – 2004 Cables for traffic signal installations – Multicore power cables, Standards Australia

AS/NZS 2276.2 – 1998 Cables for traffic signal installations – Feeder cable for vehicle detectors, Standards Australia

AS 2276.3 – 2002 Cables for traffic signal installations – Loop cable for vehicle detectors, Standards Australia

AS 2339 – 1997 Traffic signal posts and attachments, Standards Australia

AS 2353 – 1999 Pedestrian push-button assemblies, Standards Australia

AS 2578 – 2009 Traffic signal controllers, Standards Australia

AS 2703 – 2008 Vehicle loop detector sensors, Standards Australia

AS 2979 – 1998 Traffic signal mast arms, Standards Australia

9.2.3 Policy and guidelines

Australian Road Rules, National Road Transport Commission.

Design and installation of Guidesigns in the ACT, RD Gossip for Urban Services 2001

9.3 Traffic control device design

9.3.1 General design principles

The Standard Drawings for Traffic Control Devices which form part of these chapters give some guidance to designers in typical cases. As all variations could not be shown, the designers should exercise good engineering judgement and responsibility. Typical details are a guide only and designers will need to modify details to suit individual requirements as appropriate.

Materials should be chosen which provide minimum whole of life cost bearing in mind the many factors which determine the useful life of a traffic control device. The prime determinant is visibility and legibility in all lighting conditions. A sign which is still structurally sound has reached the end of its useful life if it can no longer be read at night time. Another major determinant in the case of road markings is the surface friction particularly during wet conditions.

9.3.2 Traffic Safety Audits

On larger projects it is good practice to carry out both a design audit and a pre opening audit of Traffic Safety. Designers should be aware that Roads ACT is considering making the submission of the Audit results a condition of approval in the future.

9.3.3 Sign materials

9.3.3.1 Sign Blades

Regulatory signs should use Class 1 or Class 1A or 1W sheeting given the higher retroreflectivity or luminance values. Class 1 should be used however recent changes in fabrication methods with the introduction of electronically cut film (ECF) make Class 1A or "diamond grade" material a suitable alternative. Class 1W is good for "wide angle" approaches where signs are located in the medians of divided carriageways.

The use of class 2 sheeting is generally limited to parking signs and information signs in the ACT.

Designers should consider the whole of life cost as well as reflectivity requirements if they wish to vary from these provisions bearing in mind that Class 1 material has a 12 year warranty whereas Class 2 material has only a 5 year warranty although its initial cost is lower.

9.3.3.2 Sign supports

Timber supports for signs are not approved as the timber can deteriorate rapidly in the ground leading to unexpected collapse of the sign with a potential for injury to people and property in the vicinity.

The use of devices cast into concrete and which will allow rapid and economic replacement of any sign and/or support damaged in vehicle accidents is encouraged for smaller installations except where the risk of accidents is low.

One of the approved systems listed in the Standard specification for urban infrastructure should be used in all other areas.

Major signs, such as urban arterial / freeway signs require the submission of detailed design calculations and drawings prepared by a practicing structural engineer.

All signs support shall be checked by the Designer to ensure they are frangible. In all other cases they should be located behind a safety barrier system.

9.3.4 Sign Location

Signs should generally be located as described in the Australian Standard. The standard drawings attached to this chapter give additional guidance where the Australian Standard is unclear.

Street name blades however are to be located as depicted in Figure 9.1 rather than as per the Australian Standard. This is to ensure consistency with the established ACT practice. Note that the positions shown are indicative only and the actual position should be chosen so as to maximise visibility and to utilise existing poles wherever possible.

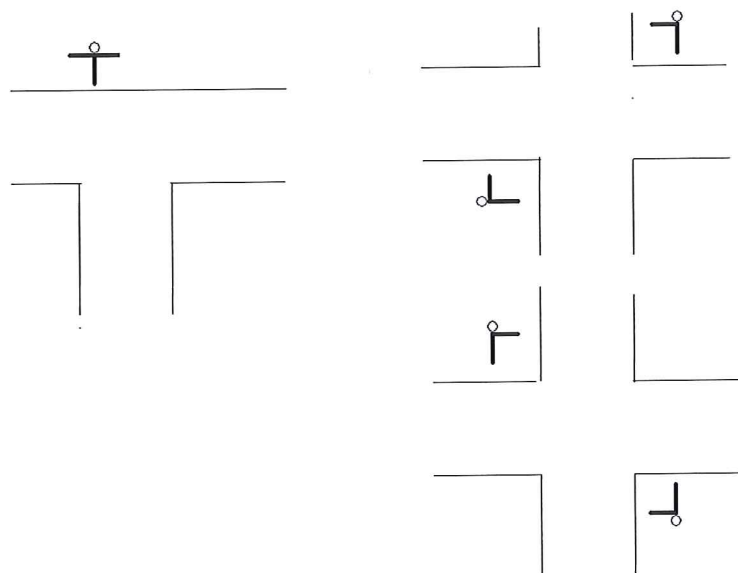


Figure 9.1 Typical Street Name Blade Positions

No more than five (5) fingerboards should be attached to any single post or pole. If there is an agreed need for a large number of 'destinations' to be signposted in a single street, consideration must be given to alternative sign designs. 200mm high fingerboard signs should be used on roads with posted speed greater than 70km/h.

9.3.5 Road Marking Materials

Road markings should be specified in the following materials:

Longitudinal markings

- (a) Pavement marking paint with glass beads.
- (b) Thermoplastic with glass beads.
- (c) Two component cold applied material with glass beads.
- (d) Retroreflective Raised Pavement markers.

Transverse lines and other markings

- (a) Pavement marking paint with glass beads and non slip aggregate.
- (b) Thermoplastic with glass beads and non slip aggregate.
- (c) Pre-formed thermoplastic with glass beads and non slip aggregate.
- (d) Two component cold applied material with glass beads and non slip aggregate
- (f) Coloured Surface Coating and non slip aggregate.
- (e) Retroreflective Raised Pavement markers.

All painted longitudinal linemarking is to be specified as waterborne paint. All paint shall be applied uniformly.

Thermoplastic when used longitudinally adjacent to cycle lanes or along roads heavily used by cyclists should be specified at a thickness less than 4mm to minimise the risk of ‘tram lining’ by cyclists using the lane.

Retroreflective raised pavement markers should be avoided in front of driveways to properties.

Detour Grade or Temporary Grade pavement marking tapes may be used for temporary delineation and are to be completely removed when no longer required.

9.3.6 Pedestrian crossings and raised platforms

Where raised platforms are installed in areas where there is likely to be pedestrian activity, a formal pedestrian crossing is required whether or not it would be warranted on pedestrian and vehicle volumes alone. This clarifies the uncertainty between motorist and pedestrian as to who has priority. The standard drawing depicts the requirements for traffic control devices on raised platforms. In new subdivisions the raised platform shall have no side slopes so that pedestrians can cross the platform on an even gradient. Adequate stormwater drainage and bollards to prevent verge access shall be provided. (Refer to DS01-Stormwater, DS 11-Fences, Guardrails and Barriers for details)

9.3.7 Kerb Mounted House Numbering

It is a requirement of the Deeds of Agreement for most new subdivisions that house numbers be marked on the kerb near the driveway. The following method has been found satisfactory in most cases.

Numbers should be at least 75mm high white or yellow in colour and applied using a stencil on a black background at least 120mm square using one of the roadmarking materials specified above. The number should be at least 25mm from the top of the kerb and located within 1metre of the driveway on the side which most clearly shows the property to which the number refers.

Designers may submit proposals for other methods of application but should be aware that proposals which involve mechanical fixings (screws or rivets etc) will not be approved.

9.3.8 Hydrant Marking

To assist emergency services to locate fire hydrants, bi-directional blue reflective pavement markers are to be placed adjacent to the centreline of the road and level with the hydrant in accordance with ActewAGL requirements. The marker should be offset from the centreline towards the side of the road on which the hydrant is located. If there is no marked centreline at the marker location, a single bi-directional white marker can be placed on the centreline adjacent to the blue marker.

9.3.9 ACT Standard Parking Signs

In order to simplify maintenance, most parking signs in the ACT are 300mm wide and 450mm deep. In the case of signs which have very long messages, the signs may be increased to 600mm deep.

Appendix A details all the sign identifiers and messages currently approved for use in the ACT together with the identifiers used on previous approved sign lists. These signs are pictorially depicted on Drawings DS9-40/1-11. Signs marked as superseded are not allowed in new installations but may be used in maintenance situations if only a few signs need replacing.

The use of signs bearing different messages may be approved for special circumstances. These signs must be identified as “special” on the Traffic Control Device drawings for the project and a pictorial representation of the sign will be required on the drawings submitted for approval. Justification must be supplied for the use of special messages. The previous ACT practice of giving a catalogue number to special signs will no longer apply.

9.3.10 Ticket Parking, Three for Free, Park and Ride Signs

For the purposes of sign colour, signs advising motorists of the operational aspects of ticket parking areas are considered to be Information Signs and should be designed with white lettering on a blue background. These signs include those which delimit the ticket parking area, indicate the location of ticket machines and list the costs and conditions of parking.

Park and Ride and Three for Free signs included within a ticket parking area should also follow this colour scheme. Park and Ride signs having regulatory effect in other areas should be red on white.

The following list details all the sign identifiers and messages currently approved for use in the ACT together with the identifiers used on previous approved sign lists. Signs marked S/S have been superseded by the sign number in the “USE” column. Signs marked as superseded are not allowed in new installations but may be used in maintenance situations if only a few signs need replacing.

Similar to other parking signs, use of signs bearing different messages may be approved for special circumstances with appropriate code allocated by Roads ACT, and a pictorial representation of the sign will be required on the drawings submitted for approval. Justification for the use of special messages must be supplied.

9.4 Standard drawings

9.4.1 Linemarking standards

Title	Drawing Number
Linemarking types	DS9-01
Pavement messages	DS9-02
Linemarking Disabled Zones	DS9-03
RRPM's at Traffic Islands	DS9-04
Miscellaneous Details	DS9-05
Bus Stop Details	DS9-06

9.4.2

9.4.3 Signposting standards

Title	Drawing Number
Vertical & lateral sign locations	DS9-11
Endorsed Sign Systems	DS9-12
Special signs	DS9-13
Finger boards	DS9-14
Signpost & footing details	DS9-15

9.4.4 Typical designs

Title	Drawing Number
Tcd's at Traffic Lights	DS9-20
Cable and Loop Layout	DS9-21
Hardware Layout	DS9-22
Tcd's for Arterial Road Roundabouts	DS9-23
Tcd's for Local Street Roundabouts	DS9-24
Children and Zebra Crossing Details	DS9-25
Raised Pavement Platform Typical Details	DS9-26
Form One / Two Lane Details	DS9-27
Refuge Islands	DS9-28
Use of B1 and B5 Lines	DS9-29

9.4.5 Parking signs

Title	Drawing Number
ACT Standard Parking Signs	DS9-40/1-11

Appendix A – List of Parking Signs

NEW CODE	OLD CODE (1)	OLD CODE (2)	DESCRIPTION	USE
1 HOUR				
R5-1	P122/1	P122	1 HOUR	
R5-1/1	P122/2	P123	1 HOUR - 7.30AM-6PM MON-FRI PUB HOL EXCEPTED	
R5-1/2	P122/3	P123/1	1 HOUR - 7.30AM-6PM MON-FRI 7.30AM-12NOON SAT PUB HOL EXCEPTED	
R5-1/3	P122/4		1 HOUR - MOTOR BIKES ONLY 9AM-5.30PM MON-FRI 9AM-12.00NOON SAT PUB HOL EXCEPTED	
R5-1/4	P122/5		1 HOUR - 9AM-3PM SUN	
R5-1/6	P122/8		1 HOUR - 4PM-8PM MON-FRI PUB HOL EXCEPTED	
R5-1/7	P122/9		1 HOUR - 9AM-3PM MON-FRI PUB HOL EXCEPTED	
R5-1/8	P122/10		1 HOUR - 9.30AM-3PM SCHOOL DAYS	
R5-1/20			1 HOUR 7.30-12NOON 2PM-6PM MON-FRI PUB HOL EXCEPTED	
R5-1/21			1 HOUR - 8:30AM-5:30PM MON-FRI PUB HOL EXCEPTED	
R5-1/30			1 HOUR 8.00-12NOON 2PM-4PM MON-FRI PUB HOL EXCEPTED	
R5-1/35			1 HOUR 8.00-10AM 2PM-4PM SCHOOL DAYS	
R5-1/36			1 HOUR 9AM-4:30PM MON-FRI PUB HOL EXCEPTED	
2 HOUR				
R5-2	P100/1	P100	2 HOUR	
R5-2/1	P100/2	P124	2 HOUR - 7.30AM-6PM MON-FRI PUB HOL EXCEPTED	
R5-2/2	P100/3	P124/1	2 HOUR - 7.30AM - 6PM MON-FRI 7.30AM -12 NOON SAT PUB HOL EXCEPTED	
R5-2/4	P100/5		2 HOUR - 9AM-3PM MON-FRI PUB HOL EXCEPTED	
R5-2/5	P100/6		2 HOUR - 8AM-5PM SCHOOL DAYS	
R5-2/6	P100/7		2 HOUR - 8.30AM - 5PM MON-FRI PUB HOL EXCEPTED	
R5-2/7	P100/8		2 HOUR - 8.30AM - 5.30PM MON-FRI PUB HOL EXCEPTED	
R5-2/8	P100/9		2 HOUR - 7.30AM - 6PM MON-SAT PUB HOL EXCEPTED	
R5-2/9	P100/10		2 HOUR - 7.30AM - 6PM MON-FRI PUB HOL EXCEPTED	
R5-2/10	P100/11		2 HOUR - 8.30AM-5.30PM MON-THUR 8.30AM-9PM FRI 8.30AM-12NOON SAT PUB HOL EXCEPTED	
R5-2/11	P100/12		2 HOUR - 7.30AM-4PM MON-FRI PUB HOL EXCEPTED	
R5-2/23			2 HOUR - 7.30AM-6PM MON-THUR PUB HOL EXCEPTED	
R5-2/24			2 HOUR - 8.30AM-5.00PM MON-THUR PUB HOL EXCEPTED	
R5-2/25			2 HOUR - MON-FRI PUB HOL EXCEPTED	
R5-2/26			2 HOUR 8.00-10AM 2PM-4PM SCHOOL DAYS	
R5-2/27			2 HOUR - 7.30AM-6PM MON-THUR PUB HOL EXCEPTED	

NEW CODE	OLD CODE (1)	OLD CODE (2)	DESCRIPTION	USE
3 HOUR				
R5-3			3 HOUR	
R5-3/1	P134/2	P134	3 HOUR 7.30AM-6PM MON-FRI PUB HOL EXCEPTED	
R5-3/3	P134/4		3 HOUR - 8.30AM-5.30PM MON-FRI 8.30-12NOON SAT PUB HOL EXCEPTED	
R5-3/15			3 HOUR -8.30AM-5:30PM MON-FRI PUB HOL EXCEPTED	
R5-3/20			3 HOUR -7.30AM-6PM MON-THUR PUB HOL EXCEPTED	
4 HOUR				
R5-4/1	P151/1	P151	4 HOUR - 9AM-5.30PM MON-FRI PUB HOL EXCEPTED	
R5-4/2	P151/2	P154	4 HOUR - 7.30AM-6PM MON-FRI PUB HOL EXCEPTED	
R5-4/3	P151/3		4 HOUR - 8.30AM-5.30PM MON-FRI PUB HOL EXCEPTED	
R5-4/15			4 HOUR - MON-FRI PUB HOL EXCEPTED	
6 HOUR				
R5-6/1	P6/1		6 HOUR - 8.30AM-5.30PM MON-FRI PUB HOL EXCEPTED	
R5-6/2	P6/2		6 HOUR - 7.30AM-6PM MON-FRI PUB HOL EXCEPTED	
5 MINUTE				
R5-13	P88/1	P88	5 MINUTE	
R5-13/1	P88/2	P119	5 MINUTE - 7.30AM-6PM MON-FRI PUB HOL EXCEPTED	
R5-13/2	P88/3		5 MINUTE - 7AM - 9AM 4PM-6PM MON-FRI PUB HOL EXCEPTED	
R5-13/3	P88/4		5 MINUTE - ALL OTHER TIMES	
R5-13/4	P88/5		5 MINUTE PARKING - 8.30AM - 5.30PM MON-FRI PUB HOL EXCEPTED	
R5-13/6			5 MINUTE PARKING - 7.30AM - 10AM 3PM-6PM MON-FRI PUB HOL EXCEPTED	
R5-13/7			5 MINUTE PARKING -7.30AM-6PM MON-FRI 7.30AM-12NOON SAT PUB HOL EXCEPTED	
15 MINUTE				
R5-15	P60/1	P60	15 MINUTE	
R5-15/1	P60/2	P60/1	15 MINUTE - ALL OTHER TIMES	
R5-15/2	P60/3	P120	15 MINUTE - 7.30AM-6PM MON-FRI PUB HOL EXCEPTED	
R5-15/3	P60/4	P120/1	15 MINUTE - 7.30AM-6PM MON-FRI 7.30AM-12NOON SAT PUB HOL EXCEPTED	
R5-15/4	P60/5		15 MINUTE - 9AM-11PM SUNDAY PUB HOL EXCEPTED	
R5-15/5	P60/6		15 MINUTE - 8.30AM-5.30PM MON-THUR 8.30AM-9PM FRI 8.30AM-12NOON SAT PUB HOL EXCEPTED	
30 MINUTE				
R5-16	P52/1	P52	30 MINUTE PARKING	

NEW CODE	OLD CODE (1)	OLD CODE (2)	DESCRIPTION	USE
R5-16/1	P52/2	P121	30 MINUTE - 7.30AM-6PM MON-FRI PUB HOL EXCEPTED	
R5-16/2	P52/3	P121/1	30 MINUTE - 7.30AM-6PM MON-FRI 7.30AM-12NOON SAT PUB HOL EXCEPTED	
R5-16/3	P52/4		30 MINUTE - ALL OTHER TIMES	
R5-16/4	P52/5		30 MINUTE - 8.30AM - 6.30PM MON-FRI 8.30AM-12.30PM SAT SUN PUB HOL EXCEPTED	
R5-16/5	P52/6		30 MINUTE - 8AM-5PM SCHOOL DAYS	
R5-16/6	P52/7		30 MINUTE - 8.30AM-5.30PM MON-FRI 8.30AM-12 NOON SAT PUB HOL EXCEPTED	
R5-16/7	P52/8		30 MINUTE - 8AM-4PM SCHOOL DAYS	
R5-16/8	P52/9		30 MINUTE - 8.30AM-5.30PM MON-THUR 8.30AM-9PM FRI 8.30AM-12 NOON SAT PUB HOL EXCEPTED	
R5-16/14			30 MINUTE - 10 AM- 3 PM PUB HOL EXCEPTED	
R5-16/20			30 MINUTE - 8:30AM-5:30PM MON-FRI PUB HOL EXCEPTED	
METER PARKING				
R5-10/8	P77/27		PARKING - METER 8.30AM-5.30PM MON-FRI PUB HOL EXCEPTED	
1 HOUR METER PARKING				
R5-1/9	P77/17		1 HOUR - METER 8.30AM-5.30PM MON-THUR 8.30AM-9PM FRI 8.30AM-12NOON SAT PUB HOL EXCEPTED	
R5-1/10	P77/18		1 HOUR - METER 8.30AM-5.30PM MON-FRI 8.30AM-12NOON SAT PUB HOL EXCEPTED	
R5-1/11	P77/23		1 HOUR - METER 8.30AM-5.30PM MON-FRI PUB HOL EXCEPTED	
R5-1/12	P77/29		1 HOUR - METER 8.30AM-5.30PM MON-THUR 8.30AM-5PM FRI 8.30AM-12NOON SAT PUB HOL EXCEPTED	
2 HOUR METER PARKING				
R5-2/12	P77/16		2 HOUR PARKING - METER 9AM-4PM MON-FRI 9AM-12NOON SAT PUB HOL EXCEPTED	
R5-2/13	P77/19		2 HOUR - METER 8.30AM-5.30PM MON-FRI 8.30AM-12NOON SAT PUB HOL EXCEPTED	
R5-2/14	P77/20		2 HOUR - METER 8.30AM-5.30PM MON-THUR 8.30AM-9PM FRI 8.30AM-12NOON SAT PUB HOL EXCEPTED	
R5-2/15	P77/24		2 HOUR - METER 8.30AM-5.30PM MON-FRI PUBHOL EXCEPTED	
R5-2/16	P77/28		2 HOUR - METER 8.30AM-5.30PM MON-THUR 8.30AM-5PM FRI // 8.30AM-12NOON SAT // PUB HOL EXCEPTED	
15 MIN METER PARKING				
R5-15/7	P77/6	P139	15 MINUTE - METER	
R5-15/8	P77/21		15 MINUTE - METER 8.30AM-5.30PM MON-FRI PUB HOL EXCEPTED	
R5-15/9	P77/26		15 MINUTE - METER 8.30AM-5.30PM MON-THUR 8.30AM-9PM FRI 8.30AM-12NOON SAT PUB HOL EXCEPTED	

NEW CODE	OLD CODE (1)	OLD CODE (2)	DESCRIPTION	USE
30 MIN METER PARKING				
R5-16/9	P77/25		30 MINUTE - METER 8.30AM-5.30PM MON-THUR 8.30AM-9PM FRI 8.30AM-12NOON SAT PUB HOL EXCEPTED	
R5-16/10	P77/22		30 MINUTE - METER 8.30AM-5.30PM MON-FRI PUB HOL EXCEPTED	
R5-16/11	P77/30		30 MINUTE - METER 8.30AM-5.30PM MON-FRI 8.30AM-12NOON SAT PUB HOL EXCEPTED	
R5-16/12	P77/15	P152	30 MINUTE - METER	
PAY PARKING				
R5-10/2	VA0/1		PARKING - PAY MON-THUR 8.30AM-5.30PM FRI 8.30AM-9PM SAT 8.30AM-12NOON PUB HOL EXCEPTED	AISLE
R5-10/3	VA0/2		PARKING - PAY MON-FRI 8.30AM-5.30PM PUB HOL EXCEPTED	AISLE
R5-10/4	VE0/1		PARKING - PAY MON-THUR 8.30AM-5.30PM FRI 8.30AM-9PM SAT 8.30AM-12NOON PUB HOL EXCEPTED 1 PARK CAR 2 PURCHASE TICKET 3 DISPLAY ON DASHBOARD CARPARK NO.	ENTRANCE
R5-10/5	VE0/2		PARKING - PAY MON-FRI 8.30AM-5.30PM PUB HOL EXCEPTED 1 PARK CAR 2 PURCHASE TICKET 3 DISPLAY ON DASHBOARD CARPARK NO.	ENTRANCE
R5-10/6	VM0/1		PARKING - PAY MON-THUR 8.30AM-5.30PM FRI 8.30AM-9PM SAT 8.30AM-12NOON PUB HOL EXCEPTED 1 PARK CAR 2 PURCHASE TICKET 3 DISPLAY ON DASHBOARD CARPARK NO.	MACHINE
R5-10/7	VM0/2		PARKING - PAY MON-FRI 8.30AM-5.30PM PUB HOL EXCEPTED 1 PARK CAR 2 PURCHASE TICKET 3 DISPLAY ON DASHBOARD CARPARK NO.	MACHINE
R5-10/11			PARKING - PAY MON-FRI 8.30AM-5.30PM SAT 8.30AM-12NOON PUB HOL EXCEPTED	ENTRANCE/ ONSTREET
R5-10/12			PARKING - PAY MON-FRI 8.30AM-5.30PM SAT 8.30AM-12NOON PUB HOL EXCEPTED 1 PARK CAR 2 PURCHASE TICKET 3 DISPLAY ON DASHBOARD CARPARK NO.	MACHINE
R5-22/5			PAY PARKING MON-THUR 10AM-5.30PM FRI 10AM 9PM SAT 8.30AM 12NOON	ON STREET
R5-22/6			PAY PARKING MON-FRI 10AM-5.30PM	ON STREET
PAY PARKING 30 MIN				
R5-30/2	VA30/1		1/2P 30MIN PARKING PAY MON-THUR 8.30AM-5.30PM FRI 8.30AM-9PM PUB HOL EXCEPTED	AISLE
R5-30/3	VA30/2		1/2P 30MIN PARKING PAY MON-FRI 8.30AM-5.30PM PUB HOL EXCEPTED	AISLE
R5-30/4	VE30/1		1/2P 30 MIN PARKING PAY MON-THUR 8.30AM-5.30PM FRI 8.30AM-9PM PUB HOL EXCEPTED 1 PARK CAR 2 PURCHASE TICKET 3 DISPLAY ON DASHBOARD CARPARK NO.	ENTRANCE
R5-30/5	VE30/2		1/2P 30MIN PARKING PAY MON-FRI 8.30AM-5.30PM PUB HOL EXCEPTED 1 PARK CAR 2 PURCHASE TICKET 3 DISPLAY ON DASHBOARD CARPARK NO.	ENTRANCE

NEW CODE	OLD CODE (1)	OLD CODE (2)	DESCRIPTION	USE
R5-30/6			1/2P 30MIN PARKING PAY MON-THUR 8.30AM-5.30PM FRI 8.30AM-9PM SAT 8.30-12NOON PUB HOL EXCEPTED	ONROAD
R5-30/7			1/2P 30MIN PARKING PAY MON-THUR 8.30AM-5.30PM FRI 8.30AM-9PM SAT 8.30-12NOON PUB HOL EXCEPTED 1 PARK CAR 2 PURCHASE TICKET 3 DISPLAY ON DASHBOARD CARPARK NO.	ONROAD-NEXT TO TICKET MACHINE
R5-30/8			1/2P 30MIN PARKING PAY MON-FRI 8.30AM-5.30PM SAT 8.30-12NOON PUB HOL EXCEPTED	ONROAD
PAY PARKING 1 HOUR				
R5-1/13	VA1/1		1 HOUR - PAY MON-THUR 8.30AM-5.30PM FRI 8.30AM-9.PM SAT 8.30AM-12NOON PUB HOL EXCEPTED	ENTRANCE
R5-1/14	VA1/2		1 HOUR PARKING - PAY MON-FRI 8.30AM-5.30PM PUB HOL EXCEPTED	ENTRANCE
R5-1/15	VE1/1		1 HOUR PARKING - PAY MON-THUR 8.30AM-5.30PM FRI 8.30AM-9.PM SAT 8.30AM-12NOON PUB HOL EXCEPTED 1 PARK CAR 2 PURCHASE TICKET 3 DISPLAY ON DASHBOARD CARPARK NO.	MACHINE
R5-1/16	VE1/2		1 HOUR PARKING - PAY MON-FRI 8.30AM-5.30PM PUB HOL EXCEPTED 1 PARK CAR 2 PURCHASE TICKET 3 DISPLAY ON DASHBOARD CARPARK NO.	MACHINE
R5-1/17	VM1/1		1 HOUR PARKING - PAY MON-THUR 8.30AM-5.30PM FRI 8.30AM-9.PM SAT 8.30AM-12NOON PUB HOL EXCEPTED 1 PARK CAR 2 PURCHASE TICKET 3 DISPLAY ON DASHBOARD CARPARK NO.	MACHINE
R5-1/18	VM1/2		1 HOUR PARKING - PAY MON-FRI 8.30AM-5.30PM PUB HOL EXCEPTED 1 PARK CAR 2 PURCHASE TICKET 3 DISPLAY ON DASHBOARD CARPARK NO.	AISLE
R5-1/19			1 HOUR PARKING- PAY 8.30AM-5.30PM MON-FRI 8.30AM-12NOON SAT PUB HOL EXCEPTED	ENTRANCE
R5-1/31			1 HOUR PARKING- PAY 8.30AM-5.30PM MON-FRI 8.30AM-12NOON SAT PUB HOL EXCEPTED 1 PARK CAR 2 PURCHASE TICKET 3 DISPLAY ON DASHBOARD CARPARK NO.	MACHINE
PAY PARKING 2 HOUR				
R5-2/17	VA2/1		2 HOUR PARKING - PAY MON-THUR 8.30AM-5.30PM FRI 8.30AM-9.PM SAT 8.30AM-12NOON PUB HOL EXCEPTED	ENTRANCE
R5-2/18	VA2/2		2 HOUR - PAY MON-FRI 8.30AM-5.30PM PUB HOL EXCEPTED	ENTRANCE
R5-2/19	VE2/1		2 HOUR PARKING - PAY MON-THUR 8.30AM-5.30PM FRI 8.30AM-9.PM SAT 8.30AM-12NOON PUB HOL EXCEPTED 1 PARK CAR 2 PURCHASE TICKET 3 DISPLAY ON DASHBOARD CARPARK NO.	MACHINE
R5-2/20	VE2/2		2 HOUR PARKING - PAY MON-FRI 8.30AM-5.30PM PUB HOL EXCEPTED 1 PARK CAR 2 PURCHASE TICKET 3 DISPLAY ON DASHBOARD CARPARK NO.	MACHINE

NEW CODE	OLD CODE (1)	OLD CODE (2)	DESCRIPTION	USE
R5-2/21	VM2/1		2 HOUR PARKING - PAY MON-THUR 8.30AM-5.30PM FRI 8.30AM-9.PM SAT 8.30AM-12NOON PUB HOL EXCEPTED 1 PARK CAR 2 PURCHASE TICKET 3 DISPLAY ON DASHBOARD CARPARK NO.	
R5-2/22	VM2/2		2 HOUR PARKING - PAY MON-FRI 8.30AM-5.30PM PUB HOL EXCEPTED 1 PARK CAR 2 PURCHASE TICKET 3 DISPLAY ON DASHBOARD CARPARK NO.	AISLE
R5-2/30			2 HOUR PARKING - PAY 8.30AM-5.30PM MON-FRI 8.30AM-12NOON SAT PUB HOL EXCEPTED	ENTRANCE
R5-2/31			2 HOUR PARKING - PAY 8.30AM-5.30PM MON-FRI 8.30AM-12NOON SAT PUB HOL EXCEPTED 1 PARK CAR 2 PURCHASE TICKET 3 DISPLAY ON DASHBOARD CARPARK NO.	MACHINE
PAY PARKING 3 HOUR				
R5-3/4	VA3/1		3 HOUR PARKING - PAY MON-THUR 8.30AM-5.30PM FRI 8.30AM-9.PM SAT 8.30AM-12NOON PUB HOL EXCEPTED	ENTRANCE
R5-3/5	VA3/2		3 HOUR PARKING - PAY MON-FRI 8.30AM-5.30PM PUB HOL EXCEPTED	MACHINE
R5-3/6	VE3/1		3 HOUR PARKING - PAY MON-THUR 8.30AM-5.30PM FRI 8.30AM-9.PM SAT 8.30AM-12NOON PUB HOL EXCEPTED 1 PARK CAR 2 PURCHASE TICKET 3 DISPLAY ON DASHBOARD CARPARK NO.	MACHINE
R5-3/7	VE3/2		3 HOUR PARKING - PAY MON-FRI 8.30AM-5.30PM PUB HOL EXCEPTED 1 PARK CAR 2 PURCHASE TICKET 3 DISPLAY ON DASHBOARD CARPARK NO.	AISLE
R5-3/8	VM3/1		3 HOUR PARKING - PAY MON-THUR 8.30AM-5.30PM FRI 8.30AM-9.PM SAT 8.30AM-12NOON PUB HOL EXCEPTED 1 PARK CAR 2 PURCHASE TICKET 3 DISPLAY ON DASHBOARD CARPARK NO.	AISLE
R5-3/9	VM3/2		3 HOUR PARKING - PAY MON-FRI 8.30AM-5.30PM PUB HOL EXCEPTED 1 PARK CAR 2 PURCHASE TICKET 3 DISPLAY ON DASHBOARD CARPARK NO.	
R5-3/10			3 HOUR PARKING- PAY MON-FRI 8.30AM-5.30PM SAT 8.30AM-12NOON PUB HOL EXCEPTED	AISLE
PAY PARKING 4 HOUR				
R5-4/4	VA4/1		4 HOUR PARKING - PAY MON-THUR 8.30AM-5.30PM FRI 8.30AM-9.PM SAT 8.30AM-12NOON PUB HOL EXCEPTED	ENTRANCE
R5-4/5	VA4/2		4 HOUR PARKING - PAY MON-FRI 8.30AM-5.30PM PUB HOL EXCEPTED	ENTRANCE
R5-4/6	VE4/2		4 HOUR PARKING - PAY MON-FRI 8.30AM-5.30PM PUB HOL EXCEPTED 1 PARK CAR 2 PURCHASE TICKET 3 DISPLAY ON DASHBOARD CARPARK NO.	MACHINE
R5-4/7	VE4/1		4 HOUR PARKING - PAY MON-THU8.30AM-5.30PM FRI 8.30AM-9.PM SAT 8.30AM-12NOON PUB HOL EXCEPTED 1 PARK CAR 2 PURCHASE TICKET 3 DISPLAY ON DASHBOARD CARPARK NO.	MACHINE

NEW CODE	OLD CODE (1)	OLD CODE (2)	DESCRIPTION	USE
R5-4/8	VM4/1		4 HOUR PARKING - PAY MON-THUR 8.30AM-5.30PM FRI 8.30AM-9.PM SAT 8.30AM-12NOON PUB HOL EXCEPTED 1 PARK CAR 2 PURCHASE TICKET 3 DISPLAY ON DASHBOARD CARPARK NO.	
R5-4/9	VM4/2		4 HOUR PARKING - PAY MON-FRI 8.30AM-5.30PM PUB HOL EXCEPTED 1 PARK CAR 2 PURCHASE TICKET 3 DISPLAY ON DASHBOARD CARPARK NO.	
R5-4/10			4 HOUR PARKING - PAY MON-FRI 8.30AM-5.30PM SAT 8.30AM-12NOON PUB HOL EXCEPTED	ENTRANCE
R5-4/11			4 HOUR PARKING - PAY MON-FRI 8.30AM-5.30PM SAT 8.30AM-12NOON PUB HOL EXCEPTED 1 PARK CAR 2 PURCHASE TICKET 3 DISPLAY ON DASHBOARD CARPARK NO.	MACHINE
MOTOR BIKE				
R5-10/1	P38/1	P38	PARKING - MOTOR BIKES ONLY	
BUS ZONE				
R5-20	M1/1	M1	BUS ZONE	
R5-20/1	M1/2	M1/1	BUS ZONE - 15 MINUTE PARKING	
R5-20/4	M1/5		BUS ZONE - 1 HOUR PARKING	
R5-20/6	M7/2	M7/1	BUS ZONE - 7.30AM-6PM PUB HOL EXCEPTED	
R5-20/7	M7/3	M7/2	BUS ZONE - 7.30AM-9.30AM 4PM-6PM MON-FRI PUB HOL EXCEPTED	
R5-20/8	M7/4		BUS ZONE - 6AM - 10AM PUB HOL EXCEPTED	
R5-20/10	M8/2	M8/2	BUS ZONE - 8AM-9.30AM 2.30PM-4PM SCHOOL DAYS	
R5-20/11	M8/3	M8/1	BUS ZONE - 3PM-4PM SCHOOL DAYS	
R5-20/12	M8/4		BUS ZONE - 8AM-4PM SCHOOL DAYS	
R5-20/13			BUS ZONE -12NOON-2PM	
R5-20/13-1			BUS ZONE -12NOON-2PM PICK UP AND SET DOWN ONLY	
R5-20/14			TRUCK ZONE FOR TRUCK WITH GVM OVER 4.5t	
R5-20/15			BUS ZONE - ALL OTHER TIMES	
R5-20/16			LOCAL SERVICES ONLY	
TAXI				
R5-21	M3/1	M3	TAXI ZONE	
R5-21/1	M3/2	M3MOD	TAXI ZONE - ALL OTHER TIMES	
R5-21/2	M3/2		TAXI ZONE - 8PM-6AM	
R5-21/3	M3/2		TAXI ZONE - 5.30PM-8.30AM 7 DAYS	
DISABLED				
R5-22/1	P19/1	P19	PERMIT ZONE - DISABLED PERSONS ONLY DISPLAY PERMIT	
R5-22/1-1			PERMIT ZONE - DISABLED PERSONS ONLY DISPLAY PERMIT TIME LIMIT	
R5-22/1-2			DISABLED ACCESS	
PERMIT				
R5-22/2	P20/1	P20	PERMIT ZONE - MEDICAL PRACTITIONERS ONLY DISPLAY PERMIT	
R5-22/3	P93/1	P93	PERMIT ZONE - COMMUNITY NURSE ONLY DISPLAY PERMIT	

NEW CODE	OLD CODE (1)	OLD CODE (2)	DESCRIPTION	USE
R5-22/4	P79/1	P79/1	PERMIT ZONE - CATEGORY L DISPLAY PERMIT	
R5-22/7	P82/1	P82	PERMIT ZONE - DIPLOMATIC CORPS DISPLAY PERMIT	
R5-22/7-1			2 HOUR PERMIT ZONE - DIPLOMATIC CORPS DISPLAY PERMIT	
R5-22/8	P82/2	P46	PERMIT ZONE - MEMBER PARLIAMENT DISPLAY PERMIT	
R5-22/37			PERMIT ZONE - HOSPITAL AUTHORISED VEHICLES ONLY DISPLAY PERMIT	
PARK AND RIDE				
R5-22/9	P46/1		PERMIT ZONE - PARK N RIDE BELCONNEN DISPLAY PERMIT	
R5-22/10	P46/2		PERMIT ZONE - PARK N RIDE TUGGERANONG DISPLAY PERMIT	
R5-22/11	P46/3		PERMIT ZONE - PARK N RIDE WODEN DISPLAY PERMIT	
R5-22/11-1			PERMIT ZONE - PARK N RIDE WODEN DISPLAY PERMIT 7:30AM 5:30PM MON -FRI PUB HOLIDAYS EXCEPTED	
R5-22/18	P46/4		PERMIT ZONE - PARK N RIDE BELCONNEN 8.30AM-5.30PM MON-FRI 8.30AM-12NOON SAT PUB HOL EXCEPTED DISPLAY PERMIT	
R5-22/19	P46/5		PERMIT ZONE - PARK N RIDE WODEN MON-FRI 7.30AM-10AM DISPLAY LABEL // PAY PARKING MON - THUR 10AM-5.30PM FRI 10AM-9PM SAT 8.30AM-12NOON PARK N RIDE PARK FREE PUB HOL EXCEPTED	
R5-22/20	P46/6		PERMIT ZONE - PARK N RIDE TUGGERANONG MON-FRI 7.30AM-10AM PUB HOL EXCEPTED // PAY PARKING MON-THUR 10AM-5.30PM FRI 10AM-9PM SAT 8.30AM-12NOON PUB HOL EXCEPTED PARK N RIDE PARK FREE 1 PARK 2 PURCHASE TICKET 3 DISPLAY ON DASHBOARD	
R5-22/21	P46/7		PERMIT ZONE - PARK N RIDE WODEN DISPLAY PERMIT 7.30AM-5AM P.H.E DISPLAY LABEL//3 HOUR PARKING 10AM-5.30PM MON-FRI 8.30AM-12NOON SAT PUB HOL EXCEPTED	
PERMIT ZONE				
R5-22/22	P75/1	P75	PERMIT ZONE - GOVERNMENT VEHICLES ONLY 30 MINUTE PARKING	
R5-22/23	P75/2	P75M OD	PERMIT ZONE GOVERNMENT VEHICLES ONLY 30 MINUTE PARKING 8.30AM-5.30PM MON-FRI PUB HOL EXCEPTED DISPLAY PERMIT	
R5-22/24	P75/3	P87	PERMIT ZONE - GOVERNMENT VEHICLES ONLY 8.30AM-5PM MON-FRI PUB HOL EXCEPTED DISPLAY PERMIT	
R5-22/26	P75/6	P166	PERMIT ZONE - GOVERNMENT VEHICLES ONLY 2 HOUR PARKING 8.30AM-5.30PM MON-FRI DISPLAY PERMIT PUB HOL EXCEPTED	
R5-22/27	P75/7	P9	PERMIT ZONE - PARKING GOVERNMENT VEHICLES ONLY DISPLAY PERMIT	

NEW CODE	OLD CODE (1)	OLD CODE (2)	DESCRIPTION	USE
R5-22/32			PERMIT ZONE - AIRPORT PERMIT HOLDERS, DISPLAY PERMIT	
R5-22/33			NO PARKING EMERGENCY VEHICLES EXCEPTED	
R5-22/34			NO PARKING ACTION VEHICLES EXCEPTED	
R5-22/35			NO PARKING POLICE VEHICLES EXCEPTED	
R5-22/36			PERMIT ZONE GOVERNMENT VEHICLES ONLY 9AM-5.30PM MON-FRI PUB HOL EXCEPTED DISPLAY PERMIT	
RESIDENTIAL PERMIT PARKING				
R5-22/12	P138/1	P134/0 4MOD	PERMIT ZONE - RESIDENTIAL NO4 8AM-5.30PM MON-FRI PUB HOL EXCEPTED DISPLAY PERMIT	
R5-22/13	P138/2	P138/0 1	PERMIT ZONE - RESIDENTIAL NO1 8AM-5.30PM MON-FRI PUB HOL EXCEPTED DISPLAY PERMIT	
R5-22/14	P138/3	P138/0 2MOD	PERMIT ZONE - RESIDENTIAL NO2 8AM-5.30PM MON-FRI PUB HOL EXCEPTED DISPLAY PERMIT	
LOADING ZONE				
R5-23/1	P27/1	P27	LOADING ZONE - 30 MINUTE	
R5-23/3	P27/3	P135	LOADING ZONE - 30 MINUTE 7.30AM-6PM MON-FRI PUB HOL EXCEPTED	
R5-23/4	P27/4	P135M OD1	LOADING ZONE - 30 MINUTE 8AM-5.30PM MON-FRI PUB HOL EXCEPTED	
R5-23/5	P27/5	P135/2	LOADING ZONE - 30 MINUTE 7.30AM-6PM PUB HOL EXCEPTED	
R5-23/6	P27/6	P135/1	LOADING ZONE - 30 MINUTE 7.30AM-6PM MON-FRI 7.30AM-12NOON SAT PUB HOL EXCEPTED	
R5-23/7			LOADING ZONE-1 HOUR	
R5-23/11	P27/11		LOADING ZONE - 30 MINUTE 7.30AM-4PM MON-FRI PUB HOL EXCEPTED	
R5-23/12			LOADING ZONE 7:30AM-11:30AM	
R5-23/15			LOADING ZONE - 30MINUTE 7.30AM-9PM MON-FRI 7.30AM-6PM SAT PUB HOL EXCEPTED	
R5-23/16			LOADING ZONE - 30MINUTE 7.30AM-9PM MON-FRI 7.30AM-12NOON SAT PUB HOL EXCEPTED	
R5-23/17			LOADING ZONE - 30 MINUTE 6.30AM-9PM MON-FRI 6AM-12NOON SAT PUB HOL EXCEPTED	
R5-23/18			LOADING ZONE - 2 HOUR	
R5-23/20			LOADING ZONE - 2 HOUR 7.30AM-6PM MON-FRI PUB HOL EXCEPTED	
R5-23/21			LOADING ZONE - 2 HOUR 8AM-5.30PM MON-FRI PUB HOL EXCEPTED	
R5-23/22			LOADING ZONE - 2 HOUR 7.30AM-6PM MON-FRI PUB HOL EXCEPTED	
R5-23/23			LOADING ZONE - 2 HOUR 7.30AM-6PM MON-FRI 7.30AM-12NOON SAT PUB HOL EXCEPTED	
R5-23/26			LOADING ZONE - 2 HOUR 7.30AM-9PM MON-FRI 7.30 -12NOON SAT PUB HOL EXCEPTED	
R5-23/27			LOADING ZONE - 2 HOUR 7.30AM-4PM MON-FRI PUB HOL EXCEPTED	
R5-23/28			LOADING ZONE - 30 MINUTE ALL OTHER TIMES	

NEW CODE	OLD CODE (1)	OLD CODE (2)	DESCRIPTION	USE
R5-23/29			LOADING ZONE -30 MINUTE 7.30AM-5:30PM MON-THUR 7.30AM-9PM FRI 7.30-12 NOON SAT	
R5-23/30			LOADING ZONE-30MINUTE 5AM-8AM	
R5-23/31			LOADING ZONE 1 HOUR 7:30AM-6PM MON-FRI PUB HOL EXCEPTED	
NO STOPPING				
R5-35	P72/1	P72	NO STOPPING	
R5-35/1			NO STOPPING ALL OTHER TIMES	
R5-36/1	P72/2	P129	NO STOPPING - 7.30AM-9AM MON-FRI PUB HOL EXCEPTED	
R5-36/2	P72/3	P130	NO STOPPING - 4.30PM-6PM MON-FRI PUB HOL EXCEPTED	
R5-36/3	P72/4	P131	NO STOPPING - 7.30AM-9AM 4.30PM-6PM MON-FRI PUB HOL EXCEPTED	
R5-36/4	P72/5	P132	NO STOPPING - 8AM-9.30AM 2.30PM-4PM SCHOOL DAYS	
R5-36/5	P72/6		NO STOPPING - 8AM-4PM SCHOOL DAYS	
R5-36/6	P72/7		NO STOPPING - 8AM-9.30AM 2.30PM-3.30PM SCHOOL DAYS	
R5-36/7	P72/8		NO STOPPING - SAT SUN	
R5-36/8	P72/9		NO STOPPING - 9AM-10AM 3PM-4PM SCHOOL DAYS	
R5-36/9	P72/10		NO STOPPING - EMERGENCY VEHICLES EXPECTED	
R5-36/10	P72/11		NO STOPPING - MON- FRI	
R5-36/11			NO STOPPING - 7.30AM-9.30AM 4.30PM-6PM MON-FRI PUB HOL EXCEPTED	
R5-36/12			NO STOPPING 9.30AM-3PM SCHOOL DAYS	
R5-36/13			NO STOPPING MID NIGHT -6AM SAT-SUN NIGHTLINK TAXIS EXCEPTED	
R5-36/14			NO STOPPING 8AM-10AM 2PM -4PM SCHOOL DAYS	
NO PARKING				
R5-40	P1/1	P1	NO PARKING	
R5-41/1	P1/2	P110	NO PARKING-PICK UP AND SET DOWN ONLY	
R5-41/4	P1/5	P128	NO PARKING - 7.30AM-6PM MON-FRI PUB HOL EXCEPTED	
R5-41/5	P1/6	P128/1	NO PARKING - 8.30AM-6PM MON-FRI PUB HOL EXCEPTED	
R5-41/6	P1/7	P160	NO PARKING - 9AM-11.00 AM MON-FRI PUB HOL EXCEPTED	
R5-41/7	P1/8	P160/1	NO PARKING - 7.30AM-9.30AM MON-FRI PUB HOL EXCEPTED	
R5-41/8	P1/9	P160M OD	NO PARKING - 9AM-11AM 2PM-3PM MON-FRI PUB HOL EXCEPTED	
R5-41/9	P1/10	P160/2	NO PARKING - 9AM-11AM 3PM-4PM MON-FRI PUB HOL EXCEPTED	
R5-41/10	P1/11	P161	NO PARKING - 9AM-5PM MON-FRI PUB HOL EXCEPTED	
R5-41/11	P1/12	P165	NO PARKING - 9AM-11AM 1PM-3PM MON-FRI PUB HOL EXCEPTED	

NEW CODE	OLD CODE (1)	OLD CODE (2)	DESCRIPTION	USE
SUPERCEDED				
R5-1/5	P122/6		1 HOUR - 7.30AM-6PM MON-FRI PUB HOL EXCEPTED	
R5-1/19			PARKING - HEALTH VEHICLES ONLY	
R5-3/2	P134/3		3 HOUR - 7.30AM-6PM MON-FRI PUB HOL EXCEPTED	X
R5-13/5	P88/6		5 MINUTE PARKING - 7.30AM - 6PM MON-FRI PUB HOL EXCEPTED	X
R5-22/28	P75/8		PERMIT ZONE - GOVERNMENT VEHICLES ONLY 8.30AM-5PM MON-FRI DISPLAY PERMIT PUB HOL EXCEPTED	X
R5-23/2	P27/2	P126	LOADING ZONE - GOODS VEHICLES LOADING & UNLOADING ONLY 7.30AM-6PM MON-FRI PUB HOL EXCEPTED	X
R5-23/8	P27/8	P136	LOADING ZONE - 7.30AM-6PM MON-FRI PUB HOL EXCEPTED	X
R5-23/9	P27/9	P168	LOADING ZONE - 7.30AM-6PM MON-THUR 7.30AM-9PM FRI 7.30AM-6PM SAT PUB HOL EXCEPTED	X
R5-23/10	P27/10		LOADING ZONE - 7.30AM-6PM MON-FRI 7.30AM-12.00 NOON SAT PUB HOL EXCEPTED	X
R5-23/12	P27/12		LOADING ZONE - 7.30AM-6PM PUB HOL EXCEPTED	X
R5-23/13	P27/13		LOADING ZONE - MON-THUR 7.30AM-6PM FRI 7.30AM-9PM SAT 7.30AM-12NOON PUB HOL EXCEPTED	X
R5-23/14	P27/14		LOADING ZONE - MON-THUR 6AM-6PM FRI 6AM-9PM SAT 6AM-12NOON PUB HOL EXCEPTED	