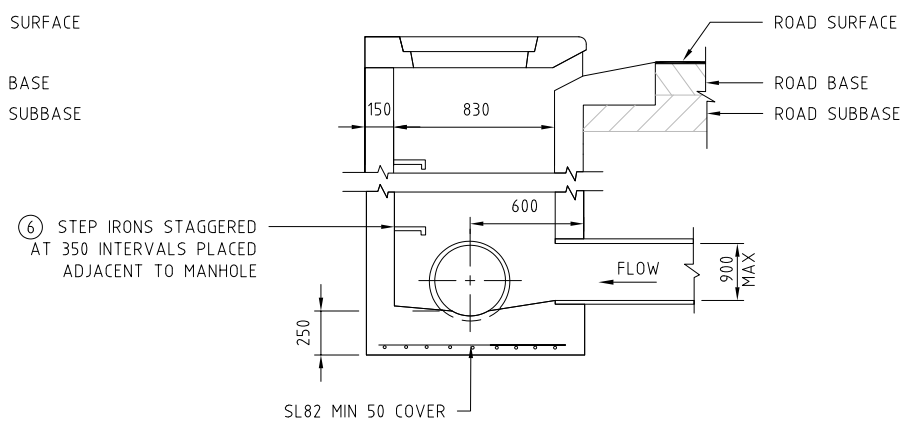
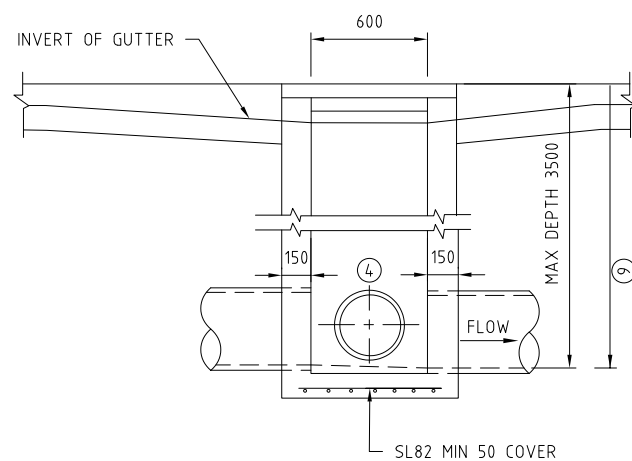


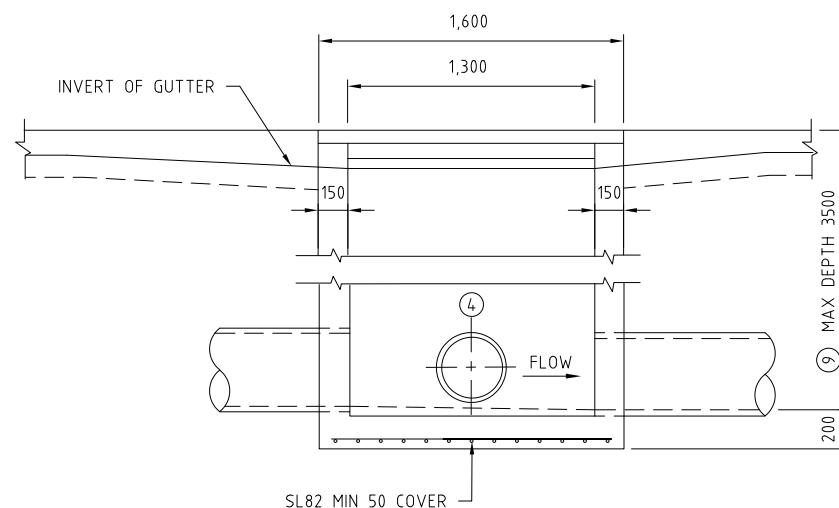
SECTION 1



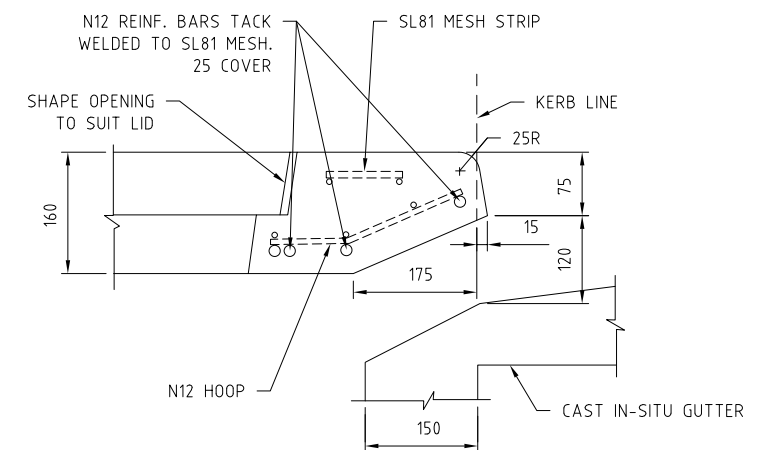
SECTION 3



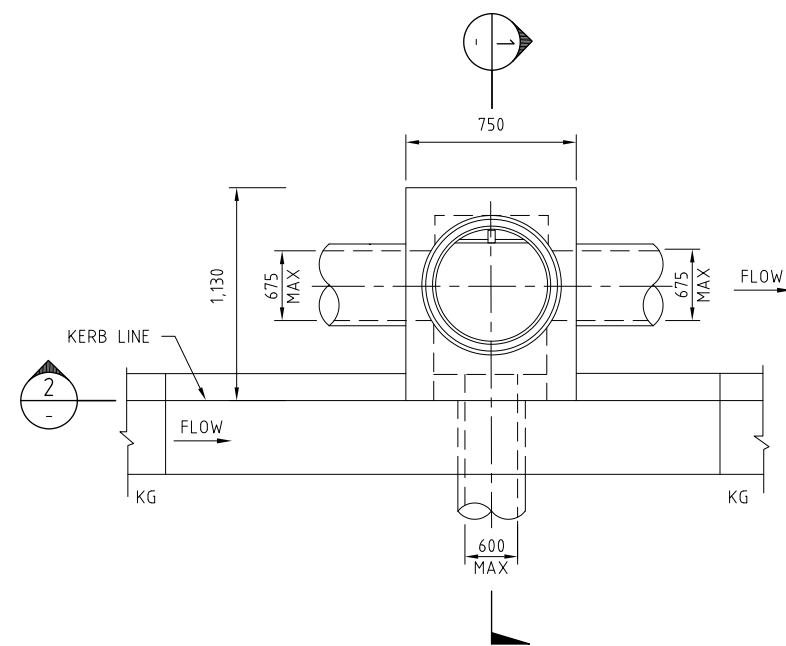
SECTION 2



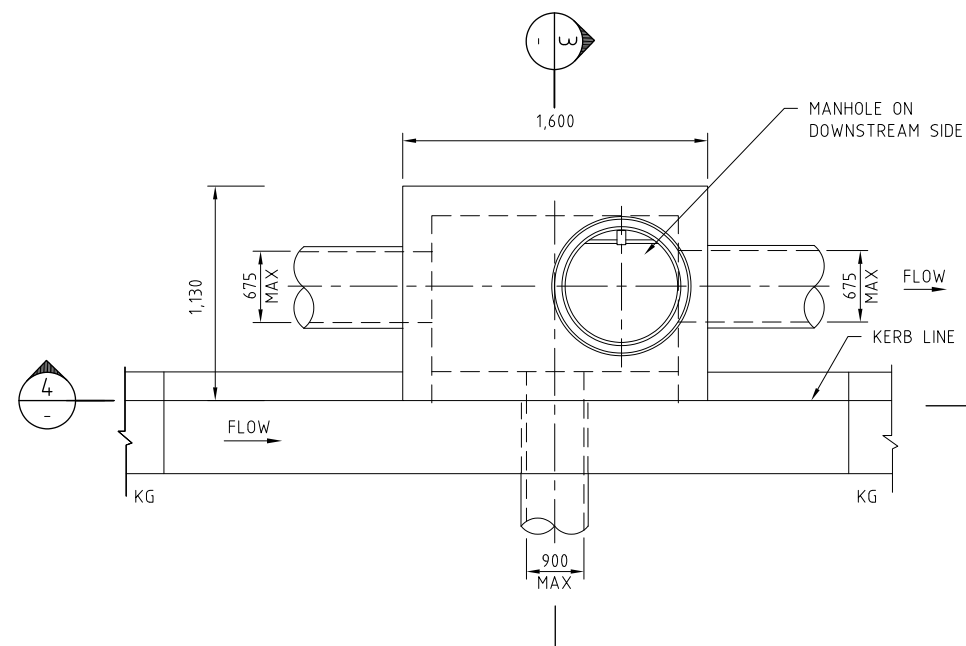
SECTION 4



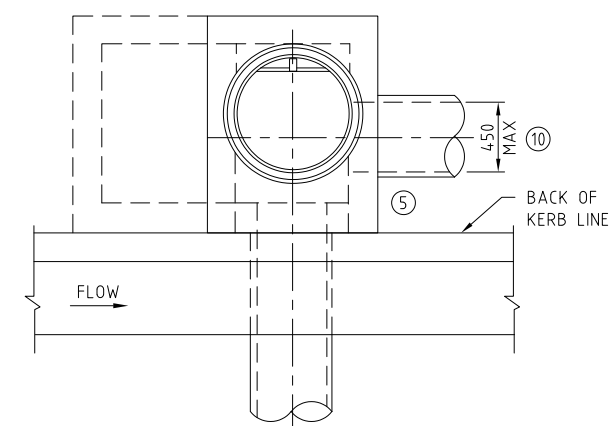
NOSING DETAIL FOR COVER SLAB



SINGLE SUMP - TYPE QS ON KERB AND GUTTER PLAN



SINGLE SUMP - TYPE R ON KERB AND GUTTER PLAN



SEALED SUMP PLAN

NOTES:

1. REFER TO DRAWING ACTSD-0000 FOR GENERAL NOTES.
2. MIN CONCRETE COMPRESSIVE STRENGTH SHALL BE 32MPa TO AS 3600.
3. COVER SLABS SHALL BE BEDDED WITH MORTAR.
4. THE INVERTS OF ALL SUMPS SHALL BE GRADED WITH FALL OF 30 MIN MEASURED AT CL TOWARDS THE OUTLET.
5. SEALED SUMPS WHERE SHOWN SHALL BE STANDARD QS OR R TYPE SUMPS BROUGHT TO THE SURFACE OR KERB LEVEL AND CONSTRUCTED BEHIND KERB.
6. SUMPS OF GREATER DEPTHS THAN 900mm SHALL BE FITTED WITH GALVANISED STEP IRONS. SEE DRAWING ACTSD-0826.
7. FOR DETAILS OF SUMPS AND TRANSITIONS ON KERB AND GUTTER SECTIONS SEE DRAWING ACTSD-0820.
8. REFER TO MIS08 FOR MIN PIPE COVER.
9. FOR SUMPS WITH DEPTH >1500 INSTALL SL82 MESH IN ALL WALLS WITH 50 EDGE COVER.
10. 450ND MAXIMUM PIPE SIZE WHERE PIPE IS 600 BEHIND KERB.



STANDARD DRAWING

TYPE R AND QS SUMPS

NOT TO SCALE

Authorised: *[Signature]*

Latest Revision Details

Rev	Amendment	Date
0	BASED ON DRG ST-0012	14/01/19
Drawing No. ACTSD-0821		Revision 0