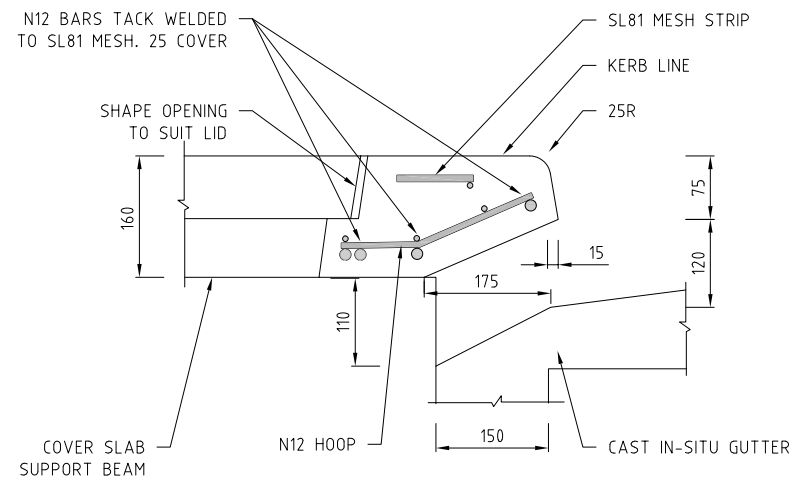


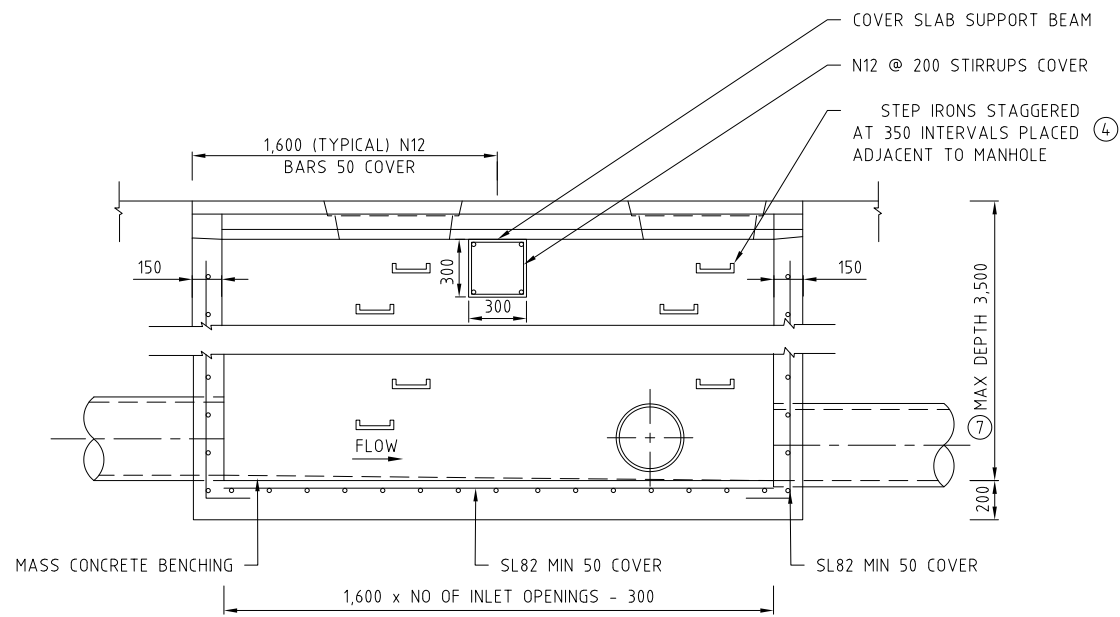
DOUBLE SUMP CONFIGURATION PLAN



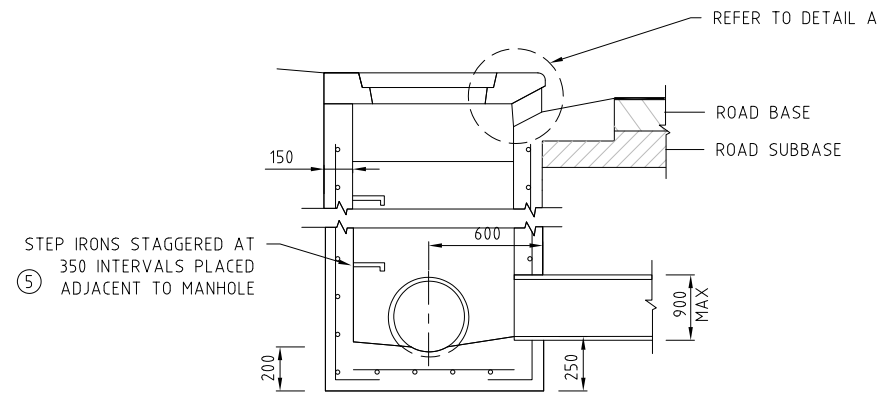
NOSING FOR COVER SLAB DETAIL A

NOTES:

1. REFER TO DRAWING ACTSD-0000 FOR GENERAL NOTES.
2. MINIMUM CONCRETE COMPRESSIVE STRENGTH SHALL BE 32MPa TO AS 3600.
3. COVER SLABS SHALL BE BEDDED WITH MORTAR.
4. THE INVERTS OF ALL SUMPS SHALL BE GRADED WITH FALL OF 30 MIN MEASURED AT CL TOWARDS THE OUTLET.
5. SUMPS OF GREATER DEPTHS THAN 900 SHALL BE FITTED WITH GALVANISED STEP IRONS. SEE DRAWING ACTSD-0830.
6. FOR DETAILS OF INLETS AND TRANSITIONS ON KERB AND GUTTER SECTIONS SEE DRAWING ACTSD-0821.
7. REFER TO MIS08 FOR MINIMUM PIPE COVER.



SECTION 1



SECTION 2

MULTIPLE R SUMPS

NOT TO SCALE

Authorised: 

Latest Revision Details

Rev	Amendment	Date
0	BASED ON DRG ST-0019	14/01/19
Drawing No. ACTSD-0826		Revision 0