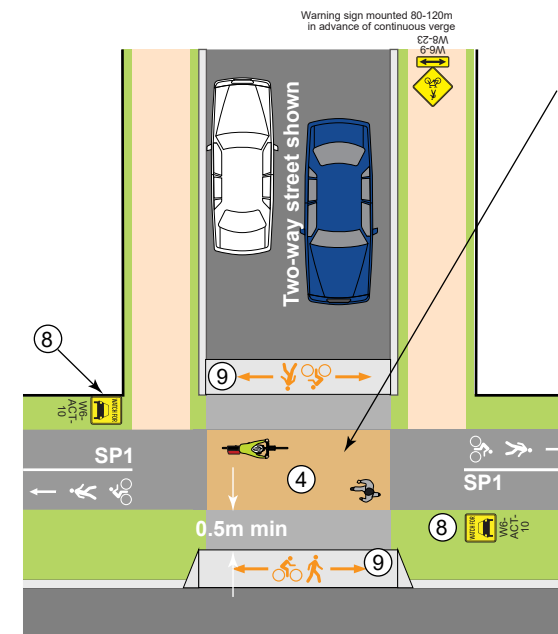


Two-way trunk path at-grade with verge with Zebra crossing on minor collector or local access intersecting street

NOTES

- 1 Treatments shown on this drawing are used on Main and Local Community Routes in Estate Development or Retrofit. See also ACTSD-0529 for additional crossing treatments in Retrofit. Zebra crossings may be installed on Access Community Routes when warranted
- 2 Path widths are as per MIS05 Table 5.8.
- 3 **Bent-out paths with Zebra crossings (above)** are provided at verge-grade to maximise pedestrian and cyclist safety, comfort, amenity and route continuity. When the platform substrate is concrete, the concrete is batch mixed with 'Brick Red' oxide to provide contrast to the crossing markings. Refer to ACTSD-3530 and -3531 for crossing set out details and ACTSD-3531, -3532 and -3533 for platform and signage details.
- 4 **Continuous verge treatments** across inner urban local access streets are provided (at-grade with verge) to maximise pedestrian and cyclist safety, comfort, amenity and route continuity. Where traffic through intersection is above 1,000vpd, use Zebra crossings. Suburban contexts use separate paths without area paving (lower right example). See MIS05 4.7.12 for details.
- 5 Traffic islands, separator medians and verges between paths and the roadway must be kept clear of any obstacles which may hamper visibility on intersection approaches.
- 6 A pavement marking group consisting of a path arrow + walker symbol + cyclist symbol is used at all trunk path entry points (from roads) and at other trunk path junctions - see ACTSD-3522.
- 7 Stop sign may be required in place of a Give Way sign if sightlines are restricted or the approach to the Zebra Crossing is on a steep downhill slope.
- 8 W6-ACT-10 warning signs placed on approaches to continuous verge treatments.
- 9 Gradients on on continuous verge approach ramps should be between 1:4 and 1:6. Pavement symbol assembly with double arrows placed on both ramp approaches to continuous verge treatments - see ACTSD-3522.
- 10 For additional measures applied to mitigate excessive speed on path or road approaches to these crossings refer to ACTSD-0523.



Continuous verge treatment without area paving at minor side street for a suburban context

For suburban land use contexts, continuous verge treatments use separate paths without area paving as shown. Access (shared) paths should be surfaced with a distinct surface treatment in the area of interaction on the continuous verge if traffic in side street is >100vpd. See MIS05 Section 2.3.2 and 4.7.12 for details.

 STANDARD DRAWING		
SIDE STREET CROSSING TREATMENTS (ON PLATFORMS) FOR PATHS (SHARED) ON MAIN & LOCAL COMMUNITY ROUTES		
Authorised: 		
Latest Revision Details:		
2	Path priority crossings removed	31/05/21
1	Ramp gradient on cont. verge added	30/04/21
0	First issue	28/09/18
Rev	Amendment	Date
Drawing No: ACTSD-0528		Revision: 2