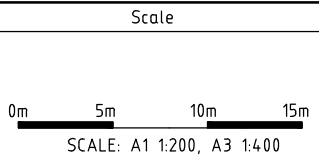


REFER TO DRG RG 22030 SHEET DP01-C0 FOR DETAILS

BRADDON: Block 5, Section 30
(2-6 TORRENS ST - THE GROUNDS)

| S.W STRUCTURE TABLE | | | | |
|---------------------|-------------------------------|------------|------------|------------|
| STRUCTURE No. | DESCRIPTION | EASTING | NORTHING | COVER R.L. |
| 1 | CONSTRUCT KI SUMP (NSW GRATE) | 211209.733 | 604490.562 | 569.436 |
| 2 | CONSTRUCT BRANCH CONNECTIONS | 211214.313 | 604488.342 | - |
| 3 | CONSTRUCT KI SUMP (NSW GRATE) | 211218.491 | 604489.389 | 569.464 |

| AMENDMENTS | | | |
|---------------------|----------|----------|--|
| AMENDMENT | APPROVAL | DATE | |
| 1 ISSUED FOR TENDER | MG | 04/12/23 | |



Design Agent

R.D. Gossip Pty Ltd
Consulting Engineers
Unit 120, 12 Provan Street
Canberra ACT 2612
Ph: 02 6251 6319

Client

Project Officer: Elizabeth Lowe

ACT Government

Project

GARDEN CITY
CYCLE ROUTE
STAGE 1A

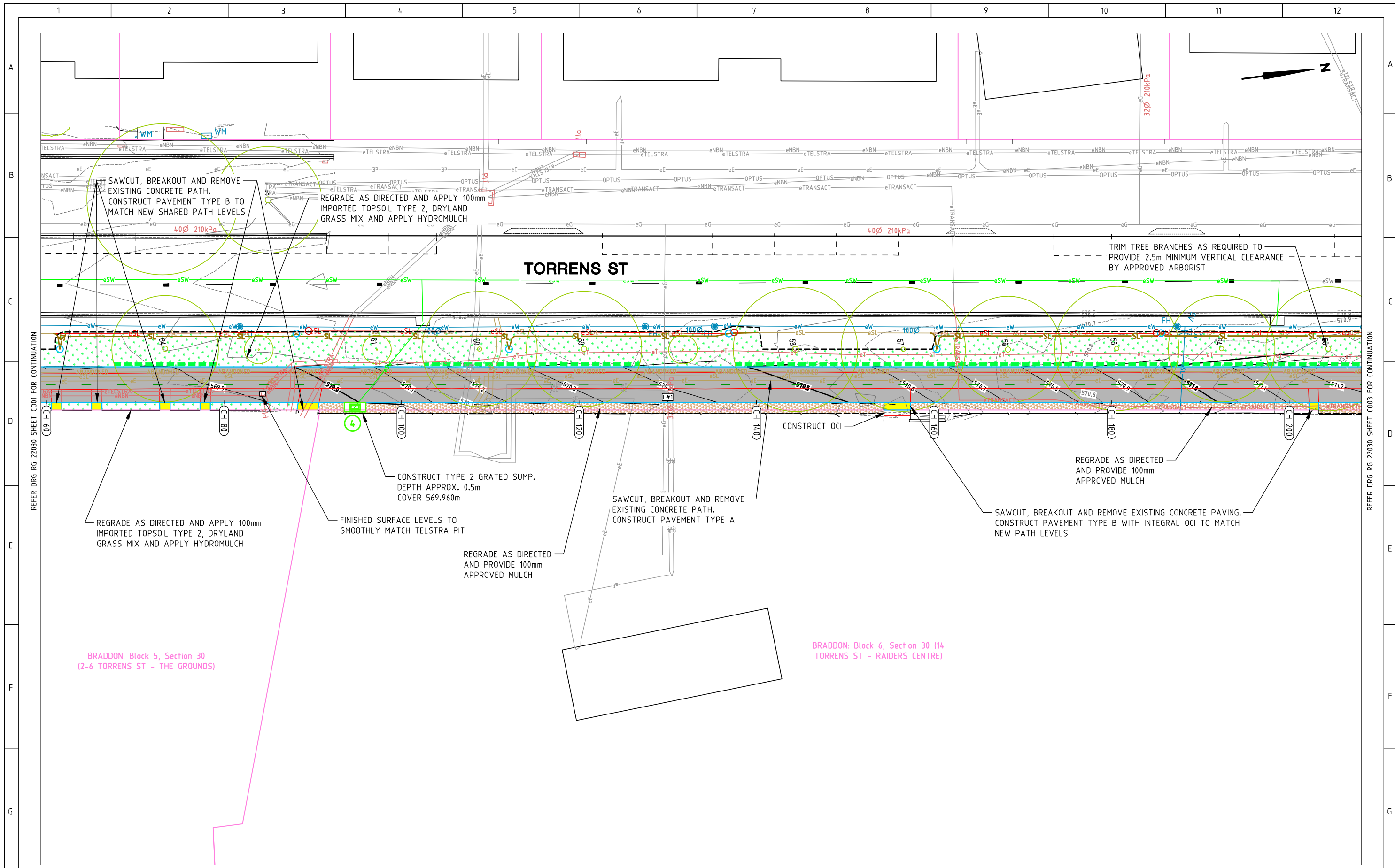
Date: 04/12/23

Drawing Title

CONSTRUCTION PLAN
- 1 OF 8

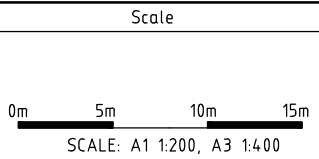
| | | |
|----------|-------|----------|
| Drg. No. | Sheet | Revision |
| RG 22030 | C001 | 1 |

REFER DRG RG 22030 SHEET C002 FOR CONTINUATION



| S.W STRUCTURE TABLE | | | | | |
|---------------------|-----------------------|------------|------------|------------|---------------------|
| STRUCTURE No. | DESCRIPTION | EASTING | NORTHING | COVER R.L. | COVER SET OUT POINT |
| 4 | CONSTRUCT GRATED SUMP | 211236.418 | 604544.986 | 569.960 | CENTRE GRATE |

| AMENDMENTS | | | |
|---------------------|----------|----------|--|
| AMENDMENT | APPROVAL | DATE | |
| 1 ISSUED FOR TENDER | MG | 04/12/23 | |



Design Agent

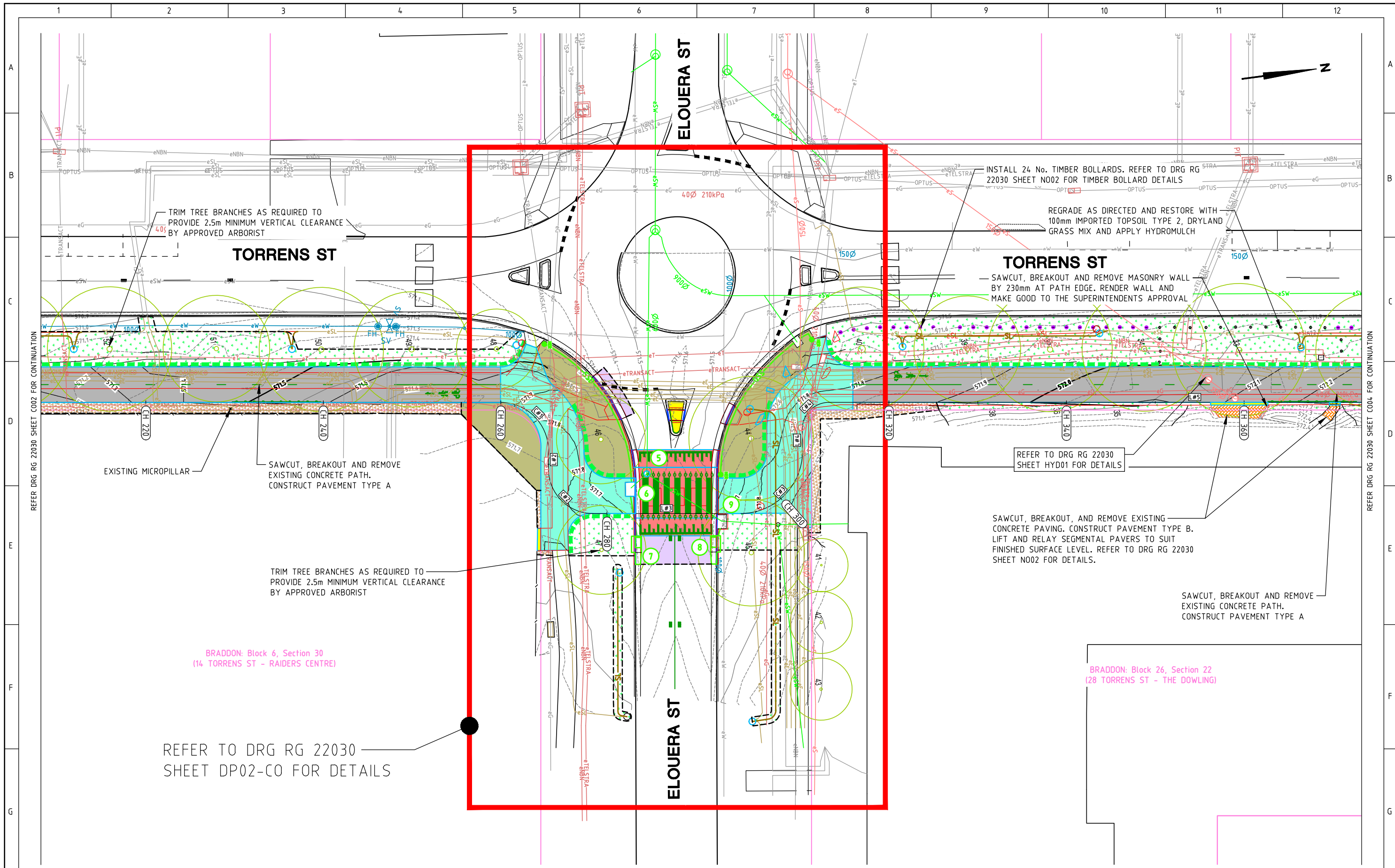
R.D. Gossip Pty Ltd
Consulting Engineers
Unit 120, 12 Provan Street
Campbell ACT 2612
Ph: 02 6251 6319

Client

Project Officer: Elizabeth Lowe

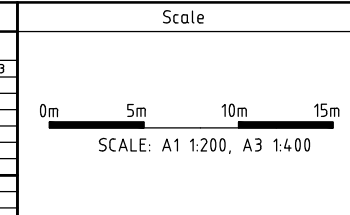
ACT Government

| Project | | Drawing Title | |
|----------------------------------|----------|----------------------------|----------|
| GARDEN CITY CYCLE ROUTE STAGE 1A | | CONSTRUCTION PLAN - 2 OF 8 | |
| Date | 04/12/23 | Drg. No. | RG 22030 |
| | | Sheet | C002 |
| | | Revision | 1 |



| S.W STRUCTURE TABLE | | | | |
|---------------------|-------------------------------|------------|------------|---------------------|
| STRUCTURE No. | DESCRIPTION | EASTING | NORTHING | COVER SET OUT POINT |
| 5 | CONSTRUCT SW LID | 211267.952 | 604724.060 | 571.655 CENTRE LID |
| 6 | SEAL SUMP | 211269.492 | 604722.567 | - |
| 7 | CONSTRUCT KI SUMP (NSW GRATE) | 211275.481 | 604721.888 | 571.563 ACTSD-0823 |
| 8 | CONSTRUCT KI SUMP (NSW GRATE) | 211276.611 | 604730.696 | 571.512 ACTSD-0823 |
| 9 | SEAL SUMP | 211274.339 | 604731.145 | - |

| AMENDMENTS | | | |
|---------------------|----------|----------|--|
| AMENDMENT | APPROVAL | DATE | |
| 1 ISSUED FOR TENDER | MG | 04/12/23 | |



Design Agent

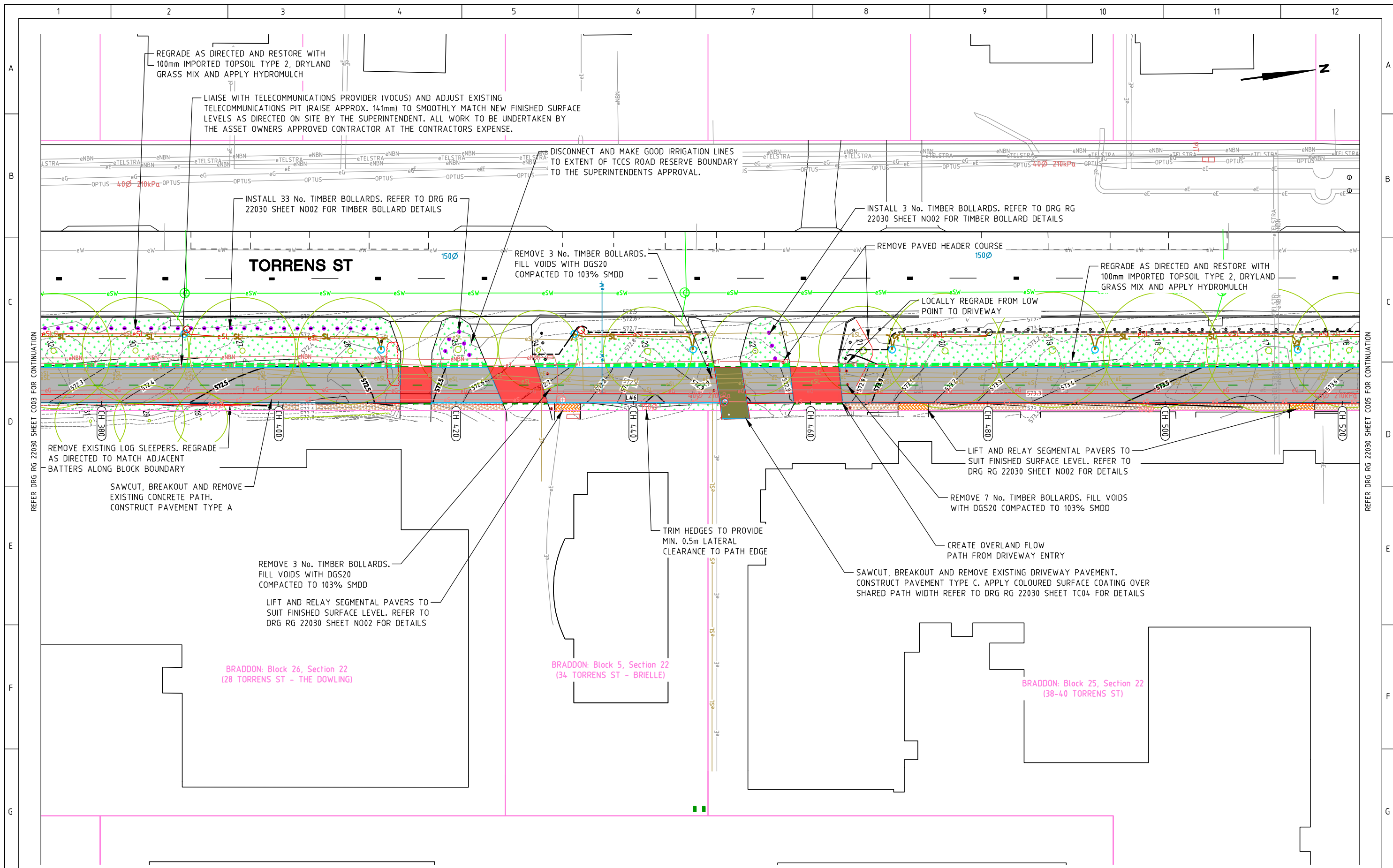
R.D. Gossip Pty Ltd
Consulting Engineers
Unit 120, 12 Provan Street
Campbell ACT 2602
Ph: 02 6251 6319

Client

Project Officer: Elizabeth Lowe

ACT Government

| Project | | Drawing Title | |
|----------------------------------|----------|----------------------------|----------|
| GARDEN CITY CYCLE ROUTE STAGE 1A | | CONSTRUCTION PLAN - 3 OF 8 | |
| Date | 04/12/23 | Drg. No. | RG 22030 |
| | | Sheet | C003 |
| | | Revision | 1 |

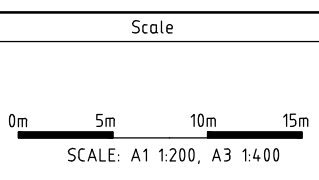


BRADDON: Block 26, Section 22
(28 TORRENS ST - THE DOWLING)

BRADDON: Block 5, Section 22
(34 TORRENS ST - BRIELLE)

BRADDON: Block 25, Section 22
(38-40 TORRENS ST)

| AMENDMENTS | | |
|--|-----------------------------|------------------------|
| AMENDMENT | APPROVAL | DATE |
| 1 ISSUED FOR TENDER | MG | 04/12/23 |
| | | |
| | | |
| | | |
| | | |
| DRAWING STAGE - LATEST DATE INDICATES DRAWING STATUS | | |
| Conceptual Design: 18/10/23 | Final Sketch Plan: --/--/-- | Final Design: 28/11/23 |
| For tendering purposes only: 04/12/23 Issued for construction: --/--/-- W.A.E.: --/--/-- | | |



Design Agent

R.D. Gossip Pty Ltd
Consulting Engineers
Unit 128, 12 Provan Street
Campbell ACT 2612
Ph: 02 6251 6319

Designed by PS
Drawn by PS
Checked by RD
Approved by MG

Client

Project Officer: Elizabeth Lowe

ACT Government

Project

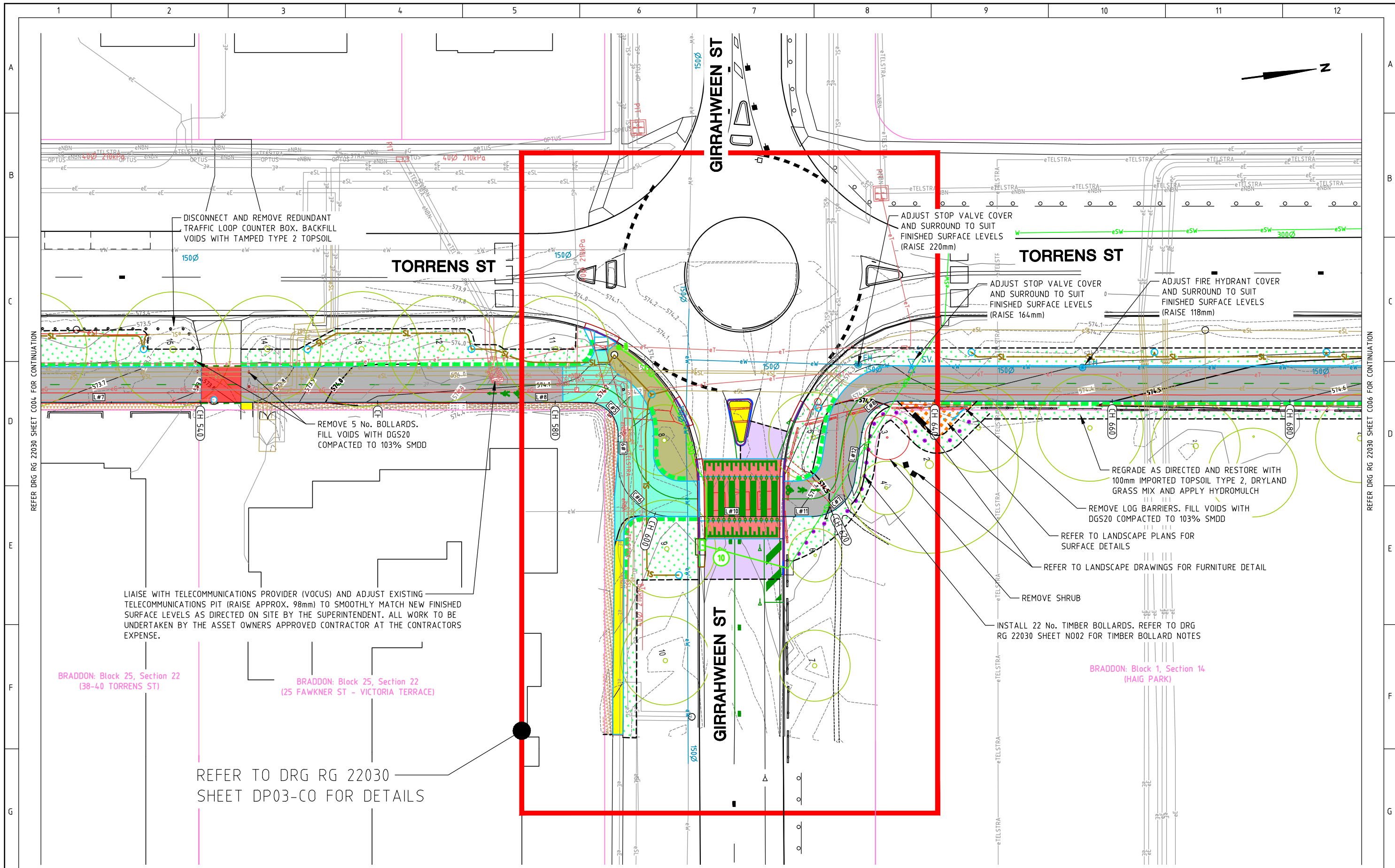
GARDEN CITY
CYCLE ROUTE
STAGE 1A

Date 04/12/23

Drawing Title

CONSTRUCTION PLAN
- 4 OF 8

| | | |
|----------|-------|----------|
| Drg. No. | Sheet | Revision |
| RG 22030 | C004 | 1 |

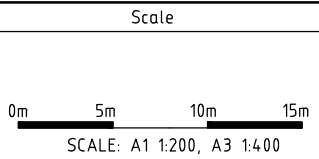


| S.W STRUCTURE TABLE | | | | |
|---------------------|-------------------------------|------------|------------|---------------------|
| STRUCTURE No. | DESCRIPTION | EASTING | NORTHING | COVER SET OUT POINT |
| 10 | CONSTRUCT KI SUMP (NSW GRATE) | 211316.157 | 605023.969 | 574.336 ACTS0-0823 |

| AMENDMENTS | | | |
|---------------------|----------|----------|--|
| AMENDMENT | APPROVAL | DATE | |
| 1 ISSUED FOR TENDER | MG | 04/12/23 | |

DRAWING STAGE - LATEST DATE INDICATES DRAWING STATUS

| | | |
|--|-----------------------------|------------------------|
| Conceptual Design: 18/10/23 | Final Sketch Plan: --/--/-- | Final Design: 28/11/23 |
| For tendering purposes only: 04/12/23 Issued for construction: --/--/-- W.A.E.: --/--/-- | | |



Design Agent

R.D. Gossip Pty Ltd
Consulting Engineers
Unit 120, 12 Proven Street
Canberra ACT 2612
Ph: 02 6251 6319

Designed by PS
Drawn by PS
Checked by RD
Approved by MG

Client

Project Officer: Elizabeth Lowe

ACT Government

Project

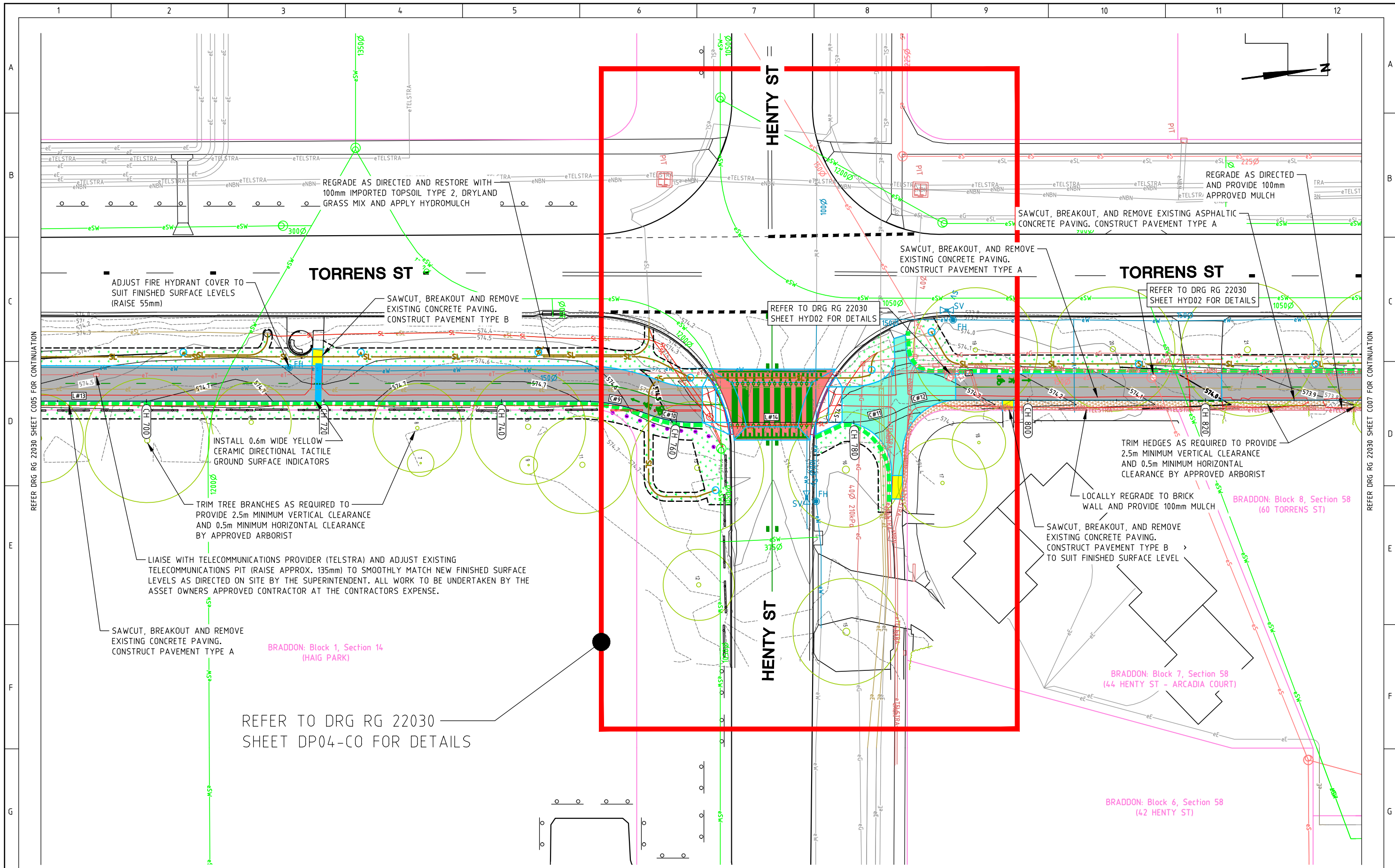
GARDEN CITY
CYCLE ROUTE
STAGE 1A

Date 04/12/23

Drawing Title

CONSTRUCTION PLAN
- 5 OF 8

| | | |
|----------------------|---------------|---------------|
| Drg. No. RG 22030 | Sheet C005 | Revision 1 |
|----------------------|---------------|---------------|

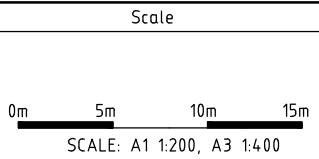


REFER DRG RG 22030 SHEET C005 FOR CONTINUATION

REFER DRG RG 22030 SHEET C007 FOR CONTINUATION

REFER TO DRG RG 22030 SHEET DP04-CO FOR DETAILS

| AMENDMENTS | | |
|--|-----------------------------|------------------------|
| AMENDMENT | APPROVAL | DATE |
| 1 ISSUED FOR TENDER | MG | 04/12/23 |
| | | |
| | | |
| | | |
| DRAWING STAGE - LATEST DATE INDICATES DRAWING STATUS | | |
| Conceptual Design: 18/10/23 | Final Sketch Plan: --/--/-- | Final Design: 28/11/23 |
| For tendering purposes only: 04/12/23 Issued for construction: --/--/-- W.A.E.: --/--/-- | | |



Design Agent

R.D. Gossip Pty Ltd
Consulting Engineers
Unit 120, 12 Provan Street
Campbell ACT 2602
Ph: 02 6251 6319

Client

Project Officer: Elizabeth Lowe

ACT
Government

Project

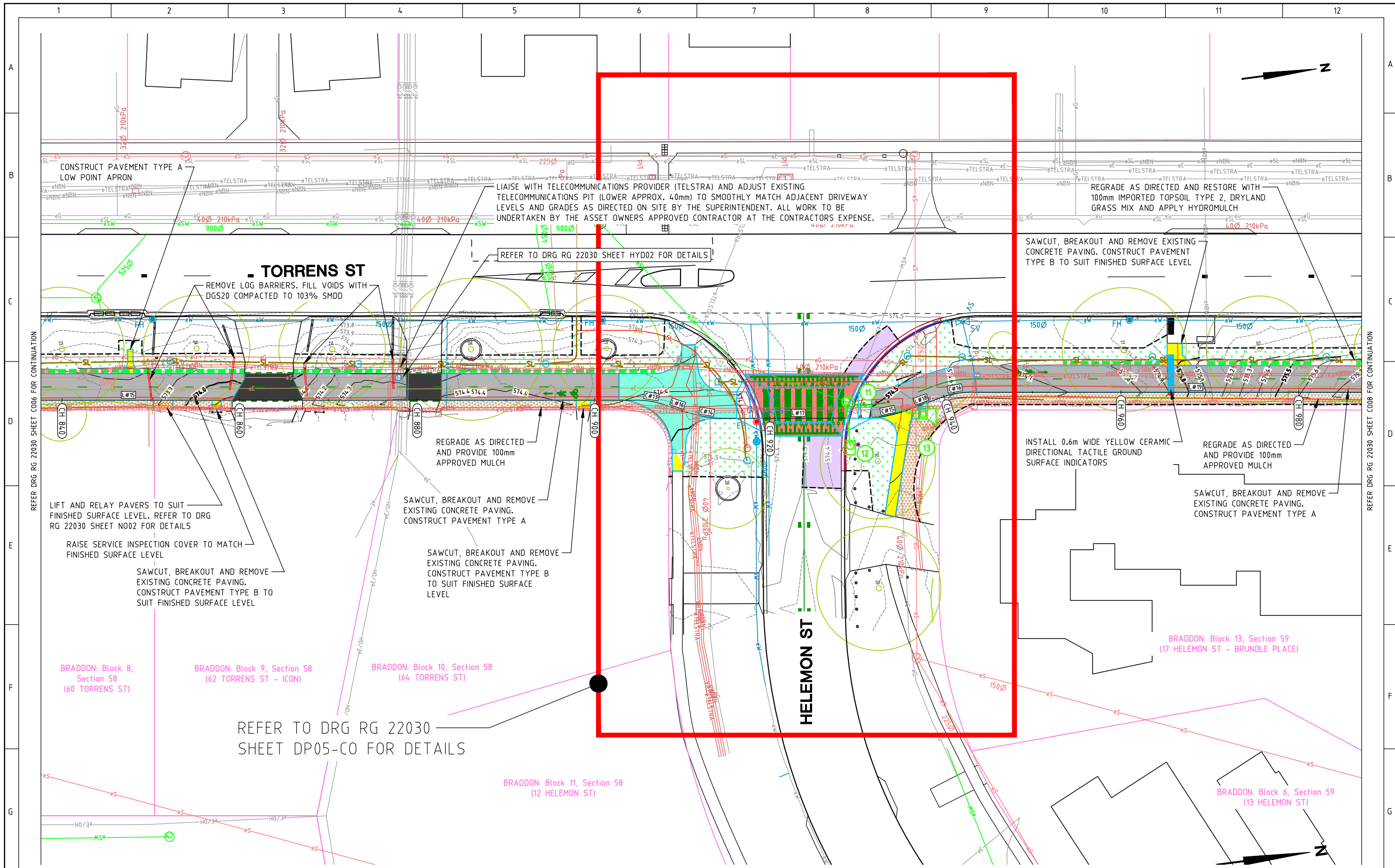
GARDEN CITY
CYCLE ROUTE
STAGE 1A

Date: 04/12/23

Drawing Title

CONSTRUCTION PLAN
- 6 OF 8

Drg. No. **RG 22030** Sheet **C006** Revision **1**



REFER DRG RG 22030 SHEET C006 FOR CONTINUATION

REFER DRG RG 22030 SHEET C008 FOR CONTINUATION

BRADDON: Block 8, Section 58 (60 TORRENS ST)

BRADDON: Block 9, Section 58 (62 TORRENS ST - ICON)

BRADDON: Block 10, Section 58 (64 TORRENS ST)

REFER TO DRG RG 22030 SHEET DP05-CO FOR DETAILS

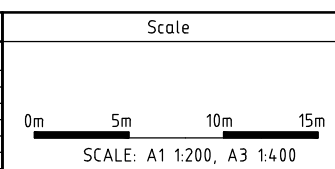
BRADDON: Block 11, Section 58 (12 HELEMON ST)

BRADDON: Block 13, Section 59 (17 HELEMON ST - BRUNDLE PLACE)

BRADDON: Block 6, Section 59 (13 HELEMON ST)

| S.W STRUCTURE TABLE | | | | | |
|---------------------|---------------------------|------------|------------|------------|---------------------|
| STRUCTURE No. | DESCRIPTION | EASTING | NORTHING | COVER R.L. | COVER SET OUT POINT |
| 11 | CONSTRUCT MANHOLE | 211341.720 | 605337.317 | 574.375 | CENTRE LID |
| 12 | CONSTRUCT R SUMP | 211346.861 | 605336.521 | 574.431 | ACTSD-0823 |
| 13 | CONSTRUCT PLANTATION SUMP | 211344.224 | 605345.778 | 574.551 | CENTRE LID |

| AMENDMENTS | | | |
|---------------------|----------|----------|--|
| AMENDMENT | APPROVAL | DATE | |
| 1 ISSUED FOR TENDER | MG | 04/12/23 | |



Design Agent

R.D. Gossip Pty Ltd
Consulting Engineers
Unit 128, 12 Provan Street
Campbell ACT 2602
Ph: 02 6251 6319

Client

Project Officer: Elizabeth Lowe

ACT Government

Project

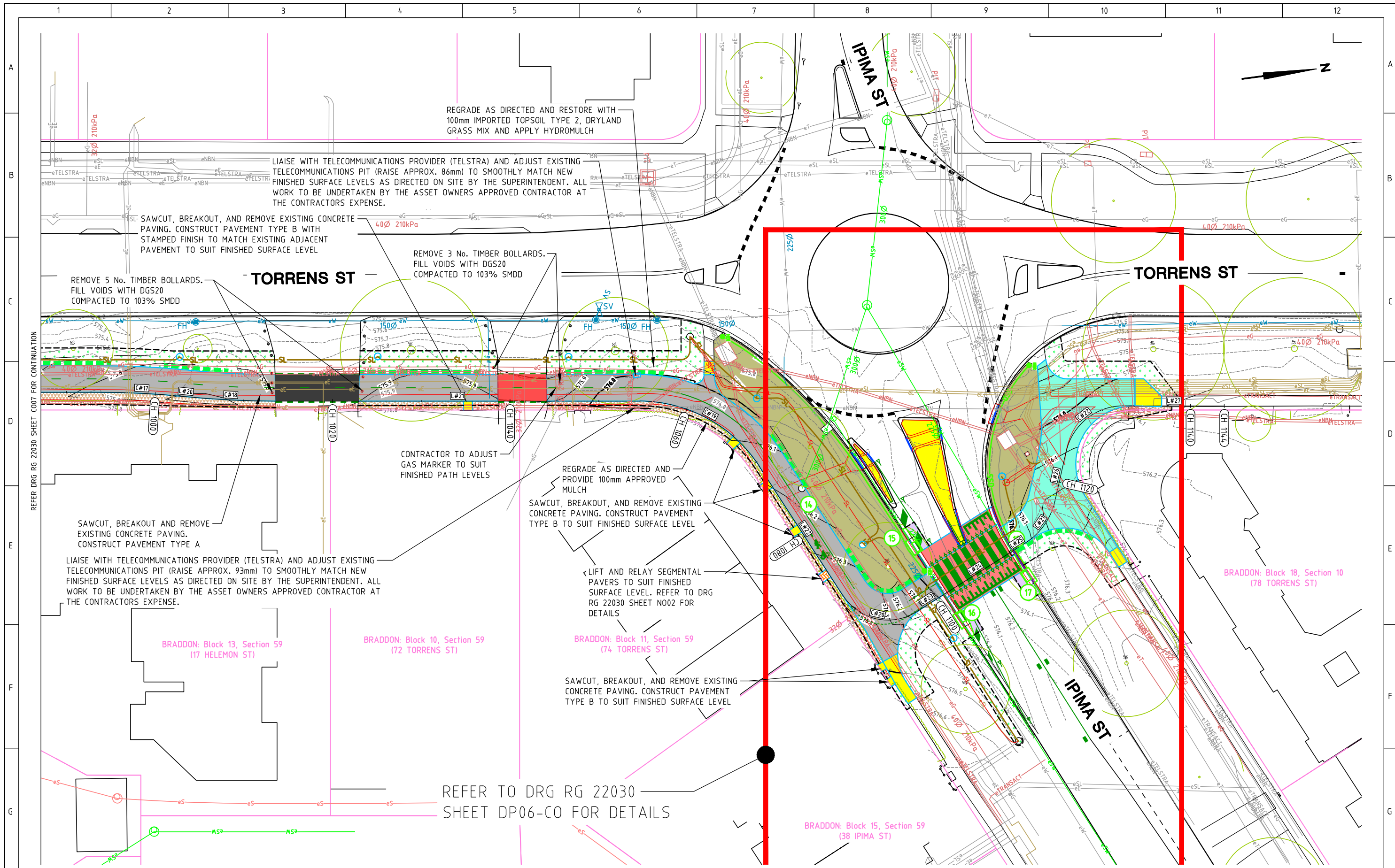
GARDEN CITY
CYCLE ROUTE
STAGE 1A

Date: 04/12/23

Drawing Title

CONSTRUCTION PLAN
- 7 OF 8

| | | |
|----------|-------|----------|
| Drg. No. | Sheet | Revision |
| RG 22030 | C007 | 1 |



REFER DRG RG 22030 SHEET C007 FOR CONTINUATION

| S.W STRUCTURE TABLE | | | | |
|---------------------|--------------------------------|------------|------------|---------------------|
| STRUCTURE No. | DESCRIPTION | EASTING | NORTHING | COVER SET OUT POINT |
| 14 | CONSTRUCT S.W LID | 211370.507 | 605478.587 | 576.171 CENTRE LID |
| 15 | CONSTRUCT KI SUMP (INSW GRATE) | 211378.772 | 605490.374 | 575.744 ACTSD-0823 |
| 16 | CONSTRUCT KI SUMP (INSW GRATE) | 211387.326 | 605494.396 | 575.842 ACTSD-0823 |
| 17 | CONSTRUCT KI SUMP (INSW GRATE) | 211383.603 | 605502.503 | 575.869 ACTSD-0823 |
| 18 | SEAL SUMP | 211380.746 | 605501.116 | - |

| AMENDMENTS | | |
|---------------------|----------|----------|
| AMENDMENT | APPROVAL | DATE |
| 1 ISSUED FOR TENDER | MG | 04/12/23 |

Scale

SCALE: A1 1:200, A3 1:400

Design Agent

R.D. Gossip Pty Ltd
Consulting Engineers
Unit 120, 12 Provan Street
Campbell ACT 2602
Ph. 02 6251 6319

Client

Project Officer: Elizabeth Lowe

ACT Government

Project

GARDEN CITY CYCLE ROUTE STAGE 1A

Date 04/12/23

Drawing Title

CONSTRUCTION PLAN - 8 OF 8

| | | |
|----------|-------|----------|
| Dr. No. | Sheet | Revision |
| RG 22030 | C008 | 1 |