

**SECTION 1**

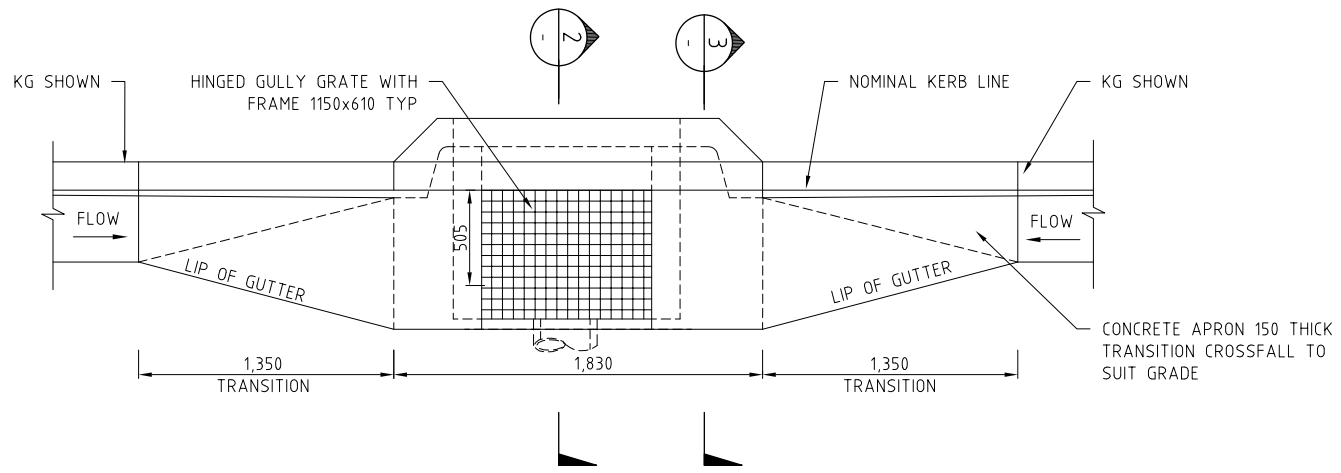
EXTENDED KERB INLET BASE

STEP IRONS STAGGERED AT 350 INTERVALS PLACED ADJACENT TO GRATE OPENING (TYP)

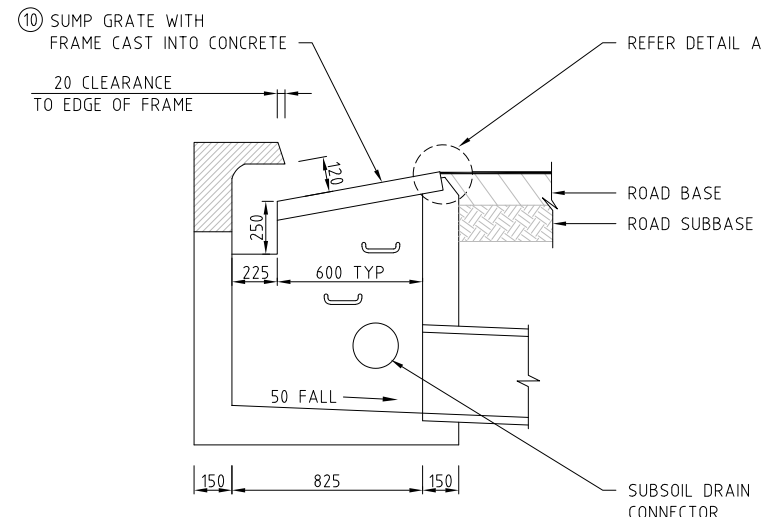
200 LONG UPVC PIPE STUB WITH GEOFABRIC FILTER PLUGS TO FRONT AND BOTH SIDES, FOR SUBSOIL DRAIN CONNECTIONS AS REQUIRED

**NOTES:**

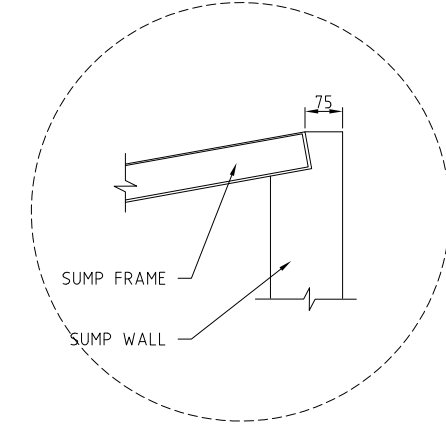
1. REFER TO DRAWING ACTSD-0000 FOR GENERAL NOTES.
2. REFER TO DRAWING ACTSD-0824 FOR LINTEL DETAILS.
3. PRECAST CONCRETE LINTEL TO BE GRADE N30 AND TO CONFORM TO AS 3600. ALL OTHER CONCRETE TO BE GRADE N25.
4. COVER TO ALL BARS TO BE 40 MIN.
5. REINFORCEMENT STEEL TO CONFORM TO AS 1302.
6. FOR SUMPS WITH DEPTH > 1500mm INSTALL SL82 MESH IN ALL WALLS WITH 50mm EDGE COVER.
7. PROVIDE 1500mm TRANSITION TO 200mm HIGH KERB.
8. KIS SUMPS TO BE USED ONLY FOR PIPES NOT PARALLEL TO KERB AND WHERE WATER MAIN IS BEHIND SUMP.
9. SUMPS OF GREATER DEPTHS THAN 900mm SHALL BE FITTED WITH GALVANISED STEP IRONS. SEE DRAWING ACTSD-0831.
10. PIT GRATE TO BE CLASS D, GALVANISED, CYCLE-SAFE GRATE. GRATES SHALL BE PROVIDED WITH A LOCKING CLIP.



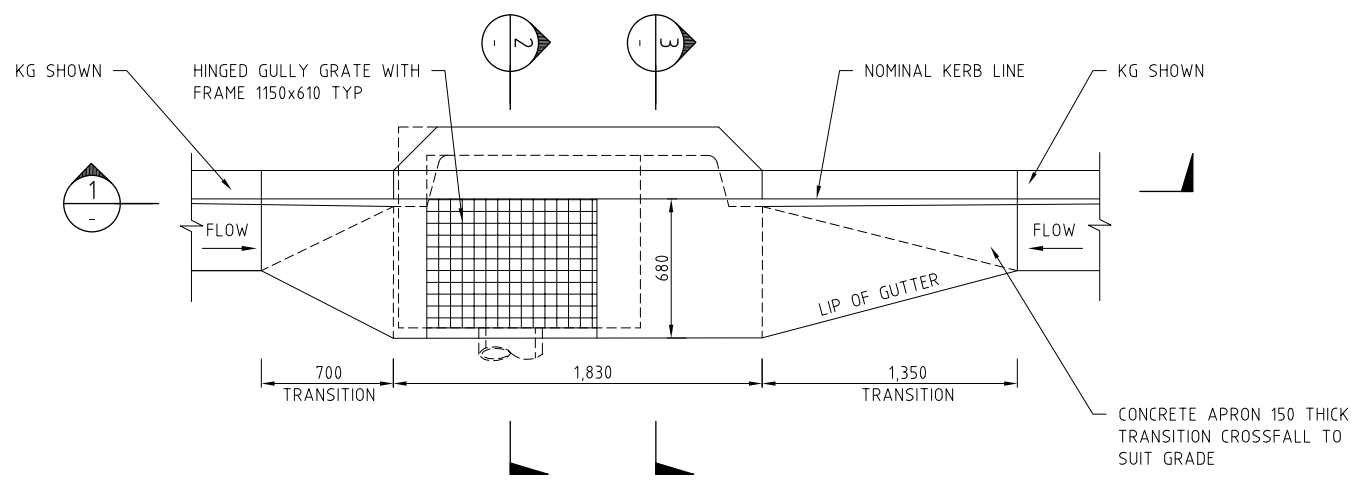
**TYPICAL INLET IN SAG - KERB AND GUTTER PLAN**



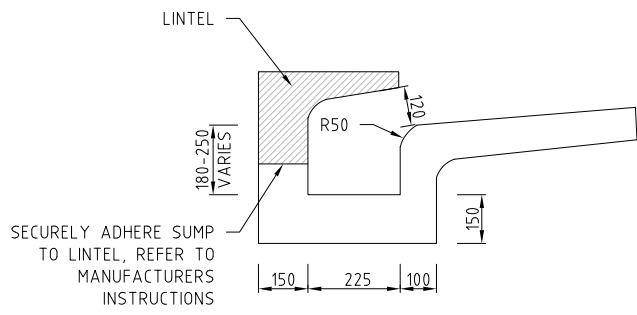
**SECTION 2**




**SUMP GRATE DETAIL A**



**TYPICAL INLET ON GRADE - KERB AND GUTTER PLAN**



**SECTION 3**



**ACT Government**

**STANDARD DRAWING**

**KI SUMP QLD GRATE**

NOT TO SCALE

Authorised: *[Signature]*

Latest Revision Details		
Rev	Amendment	Date
0	BASED ON DRG UM5530	14/01/19

Drawing No. ACTSD-0822	Revision 0
------------------------	------------