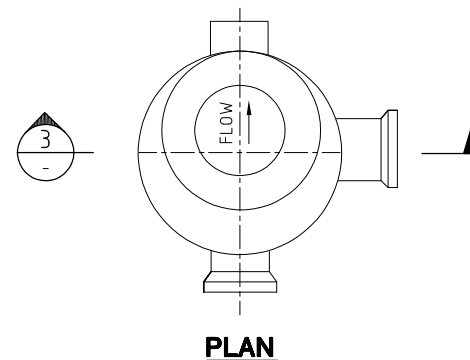
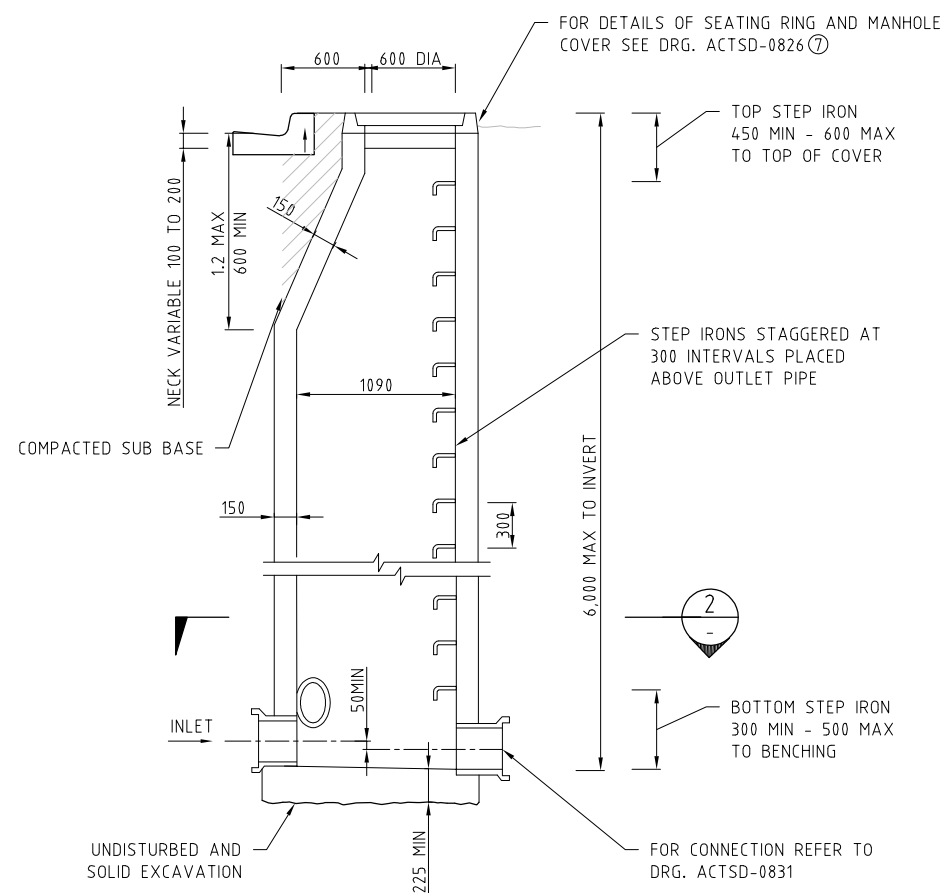


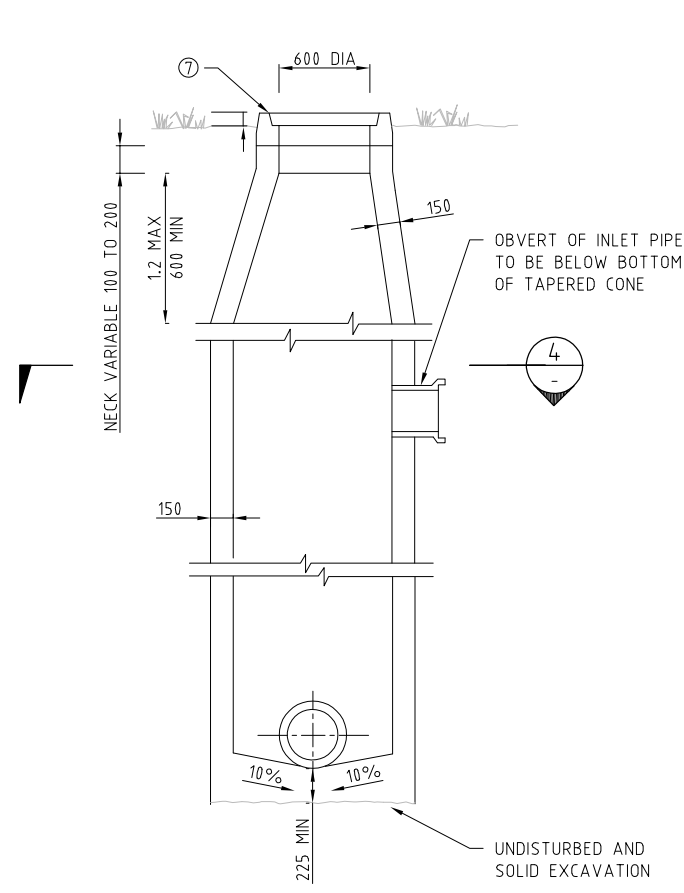
PLAN



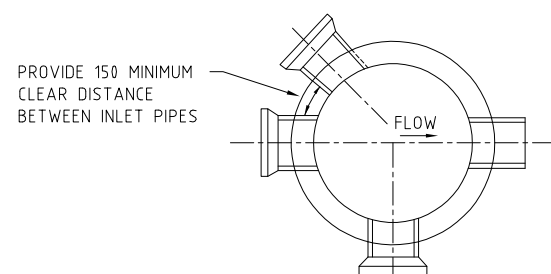
PLAN



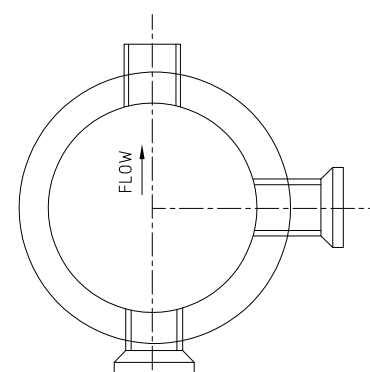
SECTION 1



SECTION 3



**SECTION 2
STANDARD TYPE**



**SECTION 4
STANDARD TYPE WITH VERTICAL DROP**

NOTES:

1. REFER TO DRAWING ACTSD-0000 FOR GENERAL NOTES.
2. MAXIMUM PIPE SIZE = 675.
3. MINIMUM CONCRETE COMPRESSIVE STRENGTH SHALL BE 32MPA TO AS 3600.
4. SPECIAL CHAMBERED MANHOLES ARE REQUIRED FOR MAINS 750 AND LARGER. REFER TO DRAWING ACTSD-0828.
5. CONNECTIONS INTO STORMWATER MANHOLES SHALL BE MADE IN ACCORDANCE WITH DRAWING ACTSD-0827.
6. IN TRAFFICABLE AREAS AND WHERE SHOWN ON DESIGN DRAWINGS, HEAVY DUTY ACCESS COVERS SHALL BE USED.
7. COVER LEVELS SHALL BE FLUSH WITH THE FINISHED SURFACE IN PAVED AREAS AND LANDSCAPED AREAS AND 100 ABOVE NATURAL SURFACE ELSEWHERE.
8. STEP IRONS SHALL BE PROVIDED IN ACCORDANCE WITH DRAWING ACTSD-0830.
9. MINIMUM FALL THROUGH MANHOLE SHALL BE 50.
10. ALL DIMENSIONS SHOWN IN mm UNO.

PRECAST MANHOLES:

PRECAST MANHOLES ARE AN ACCEPTABLE ALTERNATIVE PROVIDED THEY HAVE MINIMUM INTERNAL DIMENSIONS SHOWN ON THIS DRAWING. ALL PRE-CAST MANHOLES ARE TO BE STRUCTURALLY CERTIFIED BY THE MANUFACTURER.



**1050 ND
MANHOLES**

NOT TO SCALE

Authorised: *[Signature]*

Latest Revision Details

Rev	Amendment	Date
0	BASED ON DRG ST-0014	14/01/19
Drawing No. ACTSD-0827		Revision 0