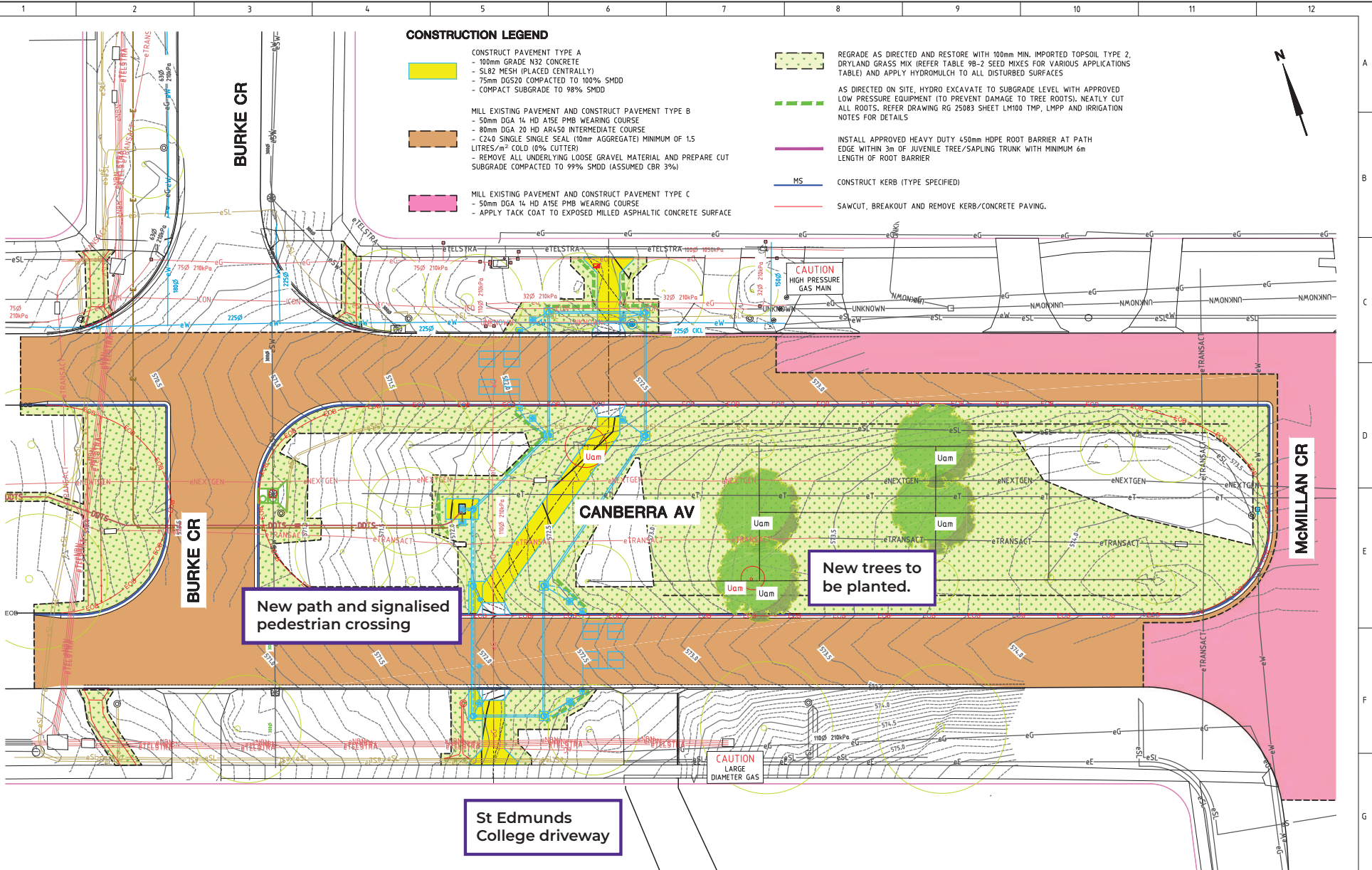


**CONSTRUCTION LEGEND**

- CONSTRUCT PAVEMENT TYPE A**
  - 100mm GRADE N32 CONCRETE
  - SL82 MESH (PLACED CENTRALLY)
  - 75mm DGS20 COMPACTED TO 100% SMDD
  - COMPACT SUBGRADE TO 98% SMDD
- MILL EXISTING PAVEMENT AND CONSTRUCT PAVEMENT TYPE B**
  - 50mm DGA 14 HD A15E PMB WEARING COURSE
  - 80mm DGA 20 HD AR450 INTERMEDIATE COURSE
  - C240 SINGLE SINGLE SEAL (10mm AGGREGATE) MINIMUM OF 1.5 LITRES/m<sup>2</sup> COLD (0% CUTTER)
  - REMOVE ALL UNDERLYING LOOSE GRAVEL MATERIAL AND PREPARE CUT SUBGRADE COMPACTED TO 99% SMDD (ASSUMED CBR 3%)
- MILL EXISTING PAVEMENT AND CONSTRUCT PAVEMENT TYPE C**
  - 50mm DGA 14 HD A15E PMB WEARING COURSE
  - APPLY TACK COAT TO EXPOSED MILLED ASPHALTIC CONCRETE SURFACE

- REGRADE AS DIRECTED AND RESTORE WITH 100mm MIN. IMPORTED TOPSOIL TYPE 2, DRYLAND GRASS MIX (REFER TABLE 98-2 SEED MIXES FOR VARIOUS APPLICATIONS TABLE) AND APPLY HYDROMULCH TO ALL DISTURBED SURFACES**
- AS DIRECTED ON SITE, HYDRO EXCAVATE TO SUBGRADE LEVEL WITH APPROVED LOW PRESSURE EQUIPMENT (TO PREVENT DAMAGE TO TREE ROOTS). NEATLY CUT ALL ROOTS. REFER DRAWING RG 25083 SHEET LMP100 TMP, LMP2 AND IRRIGATION NOTES FOR DETAILS**
- INSTALL APPROVED HEAVY DUTY 450mm HDPE ROOT BARRIER AT PATH EDGE WITHIN 3m OF JUVENILE TREE/SAPLING TRUNK WITH MINIMUM 6m LENGTH OF ROOT BARRIER**
- MS** CONSTRUCT KERB (TYPE SPECIFIED)
- SAWCUT, BREAKOUT AND REMOVE KERB/CONCRETE PAVING.**



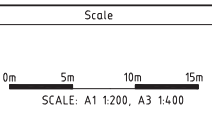
**New path and signalised pedestrian crossing**

**New trees to be planted.**

**St Edmunds College driveway**



AMENDMENTS		
AMENDMENT	APPROVAL	DATE



**Design Agent**

R.D. Gossip Pty Ltd  
Consulting Engineers  
Unit 20, 12 Pines Street  
Canberra ACT 2612  
Ph: 62 621 480

**Client**

Project Officer: Manjunath Banappa

**ACT Government**

Project	Drawing Title
CANBERRA AVENUE PEDESTRIAN SIGNALS	LANDSCAPE PLAN
Date: 04/12/25	Org. No: RG 25083
	Sheet: LP101
	Revision: 0